

WS-Series Hydraulic Couplings

Interchange Data:

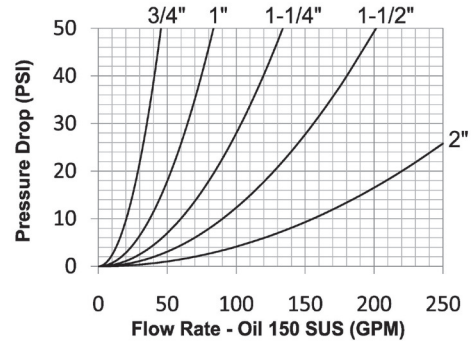
- Snap-Tite 75-Series, Hydraulics Inc. Series-5TV, DNP VFF-HD, Stucchi VOF, Faster OGV, Eaton FD85, Holmbury LC

Materials:

- Machined components are manufactured using solid steel or 316 stainless steel bar stock.
- Stainless steel retaining rings, and springs maximize corrosion resistance and extend service life.
- Steel componentry is plated using ROHS Compliant Zinc Nickel for superior corrosion resistance.
- Rugged high-strength steel sand-cast wing nut for threaded connect and disconnect operation.
- 316 stainless steel nipple connection-threads are coated to prevent galling during connection/disconnection.

Seal Components:

- Nitrile (Buna-N) seals are standard, providing a temperature range of **-40°F to 250°F (-40°C to 121°C)**
- PTFE anti-extrusion ring protects main coupling O-ring from dynamic impulse pressure damage.
- Main valve seal is 'housed' to improve seal integrity during pressurized connection/disconnection.



Rated Pressure Chart:

Body Size	WS-Series High Pressure Wingstyle Interchange (Connected)							
	Steel Coupler/Plug				316 SS Coupler/Plug			
	Maximum Working		Burst		Maximum Working		Burst	
	PSI	Bar	PSI	Bar	PSI	Bar	PSI	Bar
3/4"	5,000	345	32,800	2,200	3,000	200	20,000	1,400
1"	5,000	345	25,100	1,700	3,000	200	20,000	1,400
1-1/4"	5,000	345	25,100	1,700	3,000	200	15,000	1,000
1-1/2"	5,000	345	20,000	1,400	3,000	200	15,000	1,000
2"	5,000	345	15,000	1,000	3,000	200	15,000	1,000

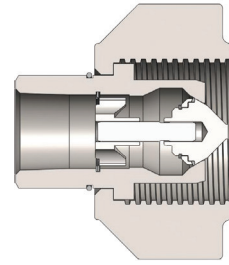
Technical Specifications:

Body Size	Interchange Standards				Functional Parameters				
	U.S. Military	U.S. Government	International Standards	ANSI/NFPA Standards	Locking Mechanism	Air Inclusion	Fluid Loss	Vacuum Inch HG	Flow ΔP = 30 PSI
3/4"	-	-	-	-	Threaded	10cc	10cc	27.4	35 GPM
1"	-	-	-	-	Threaded	23cc	15cc	27.4	65 GPM
1-1/4"	-	-	-	-	Threaded	50cc	30cc	27.4	105 GPM
1-1/2"	-	-	-	-	Threaded	100cc	60cc	27.4	160 GPM
2"	-	-	-	-	Threaded	200cc	135cc	27.4	270 GPM

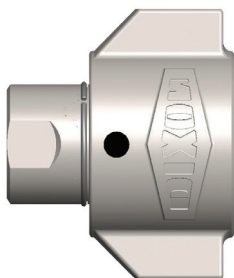
Option Adders:

Body Size	Standard Seal Options					Standard Coupling Options		
	FKM	EPDM	Mil-Nitrile	Fuel Nitrile	Silicone	Wrench Flats	View Port	Oxy-Clean
	Pre	Pre	Pre	Pre	Pre	Suf	Suf	Suf
3/4"	F-	P-	M-	JF-	S-	-WF	-VP	-C1
1"	F-	P-	M-	JF-	S-	-WF	-VP	-C1
1-1/4"	F-	P-	M-	JF-	S-	-WF	-VP	-C1
1-1/2"	F-	P-	M-	JF-	S-	-WF	-VP	-C1
2"	F-	P-	M-	JF-	S-	-WF	-VP	-C1

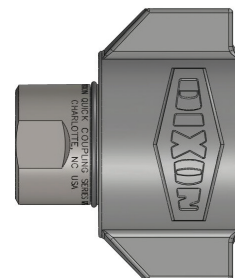
WS-Series Hydraulic Couplings



Body Size	WS-Series High Pressure Wingstyle Interchange Coupler (Female Threads)									
	Part Detail			Length		Maximum OD		Hex Inch	Package Qty	
	Part Number	Threads	Material	Inch	mm	Inch	mm		Bag	Box
3/4"	6WSF4	1/2" - 14 NPTF	steel	2.76	70.1	3.23	82.0	-	-	5
3/4"	6WSF6	3/4" - 14 NPTF	steel	2.76	70.1	3.23	82.0	-	-	5
3/4"	6WSF6-SS	3/4" - 14 NPTF	316 stainless	2.76	70.1	3.23	82.0	-	-	5
3/4"	6WSBF6	3/4" - 14 BSPP	steel	2.76	70.1	3.23	82.0	-	-	5
3/4"	6WSBF6-SS	3/4" - 14 BSPP	316 stainless	2.76	70.1	3.23	82.0	-	-	5
3/4"	6WSOF6	1-1/16" - 12 ORB	steel	2.76	70.1	3.23	82.0	-	-	5
1"	8WSF8	1" - 11-1/2 NPTF	steel	3.45	87.6	4.00	101.6	-	-	5
1"	8WSF8-SS	1" - 11-1/2 NPTF	316 stainless	3.45	87.6	4.00	101.6	-	-	5
1"	8WSBF8	1" - 11 BSPP	steel	3.45	87.6	4.00	101.6	-	-	5
1"	8WSBF8-SS	1" - 11 BSPP	316 stainless	3.45	87.6	4.00	101.6	-	-	5
1"	8WSOF8	1-5/16" - 12 ORB	steel	3.45	87.6	4.00	101.6	-	-	5
1-1/4"	10WSF10	1-1/4" - 11-1/2 NPTF	steel	4.40	111.8	4.65	118.1	-	-	1
1-1/4"	10WSF10-SS	1-1/4" - 11-1/2 NPTF	316 stainless	4.40	111.8	4.65	118.1	-	-	1
1-1/4"	10WSBF10	1-1/4" - 11 BSPP	steel	4.40	111.8	4.65	118.1	-	-	1
1-1/4"	10WSBF10-SS	1-1/4" - 11 BSPP	316 stainless	4.40	111.8	4.65	118.1	-	-	1
1-1/4"	10WSOF10	1-5/8" - 12 ORB	steel	4.40	111.8	4.65	118.1	-	-	1
1-1/2"	12WSF12	1-1/2" - 11-1/2 NPTF	steel	5.13	130.3	5.43	137.9	-	-	1
1-1/2"	12WSF12-SS	1-1/2" - 11-1/2 NPTF	316 stainless	5.13	130.3	5.43	137.9	-	-	1
1-1/2"	12WSBF12	1-1/2" - 11 BSPP	steel	5.13	130.3	5.43	137.9	-	-	1
1-1/2"	12WSBF12-SS	1-1/2" - 11 BSPP	316 stainless	5.13	130.3	5.43	137.9	-	-	1
1-1/2"	12WSOF12	1-7/8" - 12 ORB	steel	5.13	130.3	5.43	137.9	-	-	1
2"	16WSF16	2" - 11-1/2 NPTF	steel	6.09	154.7	6.73	170.9	-	-	1
2"	16WSF16-SS	2" - 11-1/2 NPTF	316 stainless	6.09	154.7	6.73	170.9	-	-	1
2"	16WSBF16	2" - 11 BSPP	steel	6.09	154.7	6.73	170.9	-	-	1
2"	16WSBF16-SS	2" - 11 BSPP	316 stainless	6.09	154.7	6.73	170.9	-	-	1
2"	16WSOF16	2-1/2" - 12 ORB	steel	6.09	154.7	6.73	170.9	-	-	1



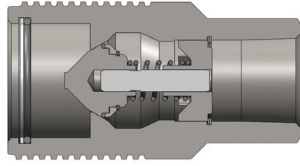
WS coupler with view port



WS coupler with wrench flats

Wrench flats may result in reduced pressure performance.

WS-Series Hydraulic Couplings



Body Size	WS-Series High Pressure Wingstyle Interchange Nipple (Female Threads)									
	Part Detail			Length		Maximum OD		Hex Inch	Package Qty	
	Part Number	Threads	Material	Inch	mm	Inch	mm		Bag	Box
3/4"	WS6F4	1/2" - 14 NPTF	steel	3.27	83.1	1.74	44.2	-	-	5
3/4"	WS6F6	3/4" - 14 NPTF	steel	3.27	83.1	1.74	44.2	-	-	5
3/4"	WS6F6-SS	3/4" - 14 NPTF	316 stainless	3.27	83.1	1.74	44.2	-	-	5
3/4"	WS6BF6	3/4" - 14 BSPP	steel	3.27	83.1	1.74	44.2	-	-	5
3/4"	WS6BF6-SS	3/4" - 14 BSPP	316 stainless	3.27	83.1	1.74	44.2	-	-	5
3/4"	WS6OF6	1-1/16" - 12 ORB	steel	3.27	83.1	1.74	44.2	-	-	5
1"	WS8F8	1" - 11-1/2 NPTF	steel	4.18	106.2	2.25	57.2	-	-	5
1"	WS8F8-SS	1" - 11-1/2 NPTF	316 stainless	4.18	106.2	2.25	57.2	-	-	5
1"	WS8BF8	1" - 11 BSPP	steel	4.18	106.2	2.25	57.2	-	-	5
1"	WS8BF8-SS	1" - 11 BSPP	316 stainless	4.18	106.2	2.25	57.2	-	-	5
1"	WS8OF8	1-5/16" - 12 ORB	steel	4.18	106.2	2.25	57.2	-	-	5
1-1/4"	WS10F10	1-1/4" - 11-1/2 NPTF	steel	5.38	136.7	2.63	66.8	-	-	1
1-1/4"	WS10F10-SS	1-1/4" - 11-1/2 NPTF	316 stainless	5.38	136.7	2.63	66.8	-	-	1
1-1/4"	WS10BF10	1-1/4" - 11 BSPP	steel	5.38	136.7	2.63	66.8	-	-	1
1-1/4"	WS10BF10-SS	1-1/4" - 11 BSPP	316 stainless	5.38	136.7	2.63	66.8	-	-	1
1-1/4"	WS10OF10	1-5/8" - 12 ORB	steel	5.38	136.7	2.63	66.8	-	-	1
1-1/2"	WS12F12	1-1/2" - 11-1/2 NPTF	steel	5.98	151.9	3.25	82.6	-	-	1
1-1/2"	WS12F12-SS	1-1/2" - 11-1/2 NPTF	316 stainless	5.98	151.9	3.25	82.6	-	-	1
1-1/2"	WS12BF12	1-1/2" - 11 BSPP	steel	5.98	151.9	3.25	82.6	-	-	1
1-1/2"	WS12BF12-SS	1-1/2" - 11 BSPP	316 stainless	5.98	151.9	3.25	82.6	-	-	1
1-1/2"	WS12OF12	1-7/8" - 12 ORB	steel	5.98	151.9	3.25	82.6	-	-	1
2"	WS16F16	2" - 11-1/2 NPTF	steel	7.05	179.1	4.00	101.6	-	-	1
2"	WS16F16-SS	2" - 11-1/2 NPTF	316 stainless	7.05	179.1	4.00	101.6	-	-	1
2"	WS16BF16	2" - 11 BSPP	steel	7.05	179.1	4.00	101.6	-	-	1
2"	WS16BF16-SS	2" - 11 BSPP	316 stainless	7.05	179.1	4.00	101.6	-	-	1
2"	WS16OF16	2-1/2" - 12 ORB	steel	7.05	179.1	4.00	101.6	-	-	1

WS-Series Hydraulic Couplings



Body Size	WS-Series Coupler Rigid Dust Plug				
	Part Detail			Package Qty	
	Part Number	Lanyard	Body	Bag	Box
3/4"	6WSDP-A	steel cable	aluminum	5	25
1"	8WSDP-A	steel cable	aluminum	-	10
1-1/4"	10WSDP-A	steel cable	aluminum	-	10
1-1/2"	12WSDP-A	steel cable	aluminum	-	5
2"	16WSDP-A	steel cable	aluminum	-	5



Body Size	WS-Series Nipple Rigid Dust Cap				
	Part Detail			Package Qty	
	Part Number	Lanyard	Body	Bag	Box
3/4"	WS6DC-A	steel cable	aluminum	5	25
1"	WS8DC-A	steel cable	aluminum	-	10
1-1/4"	WS10DC-A	steel cable	aluminum	-	10
1-1/2"	WS12DC-A	steel cable	aluminum	-	10
2"	WS16DC-A	steel cable	aluminum	-	5

WS-Series Hydraulic Couplings

Body Size	WS-Series High Pressure Wingstyle Interchange Coupler Seal Kits					
	Part Detail			Seal Kit Contents	Package Qty	
	Part Number	Coupler Style	Seal Material		Bag	Box
3/4"	6WS-SKIT	all	Nitrile	body / valve seals and retaining rings	1	25
1"	8WS-SKIT	all	Nitrile	body / valve seals and retaining rings	1	25
1-1/4"	10WS-SKIT	all	Nitrile	body / valve seals and retaining rings	1	25
1-1/2"	12WS-SKIT	all	Nitrile	body / valve seals and retaining rings	1	25
2"	16WS-SKIT	all	Nitrile	body / valve seals and retaining rings	1	25

Body Size	WS-Series BOP Wingstyle Interchange Coupler Seal Kits					
	Part Detail			Seal Kit Contents	Package Qty	
	Part Number	Coupler Style	Seal Material		Bag	Box
3/4"	6BOP-SKIT	all	FR FKM	body / valve seals and retaining rings	1	25
1"	8BOP-SKIT	all	FR FKM	body / valve seals and retaining rings	1	25
1-1/4"	10BOP-SKIT	all	FR FKM	body / valve seals and retaining rings	1	25
1-1/2"	12BOP-SKIT	all	FR FKM	body / valve seals and retaining rings	1	25
2"	16BOP-SKIT	all	FR FKM	body / valve seals and retaining rings	1	25

Body Size	WS-Series High Pressure Wingstyle Interchange Coupler Repair Kits					
	Part Detail			Repair Kit Contents (for one coupler or nipple)	Package Qty	
	Part Number	Coupler Style	Seal Material		Bag	Box
3/4"	6WS-RKIT	all	Nitrile	valve assembly, O-ring, and PTFE B.U.	1	25
1"	8WS-RKIT	all	Nitrile	valve assembly, O-ring, and PTFE B.U.	1	25
1-1/4"	10WS-RKIT	all	Nitrile	valve assembly, O-ring, and PTFE B.U.	1	25
1-1/2"	12WS-RKIT	all	Nitrile	valve assembly, O-ring, and PTFE B.U.	1	25
2"	16WS-RKIT	all	Nitrile	valve assembly, O-ring, and PTFE B.U.	1	25