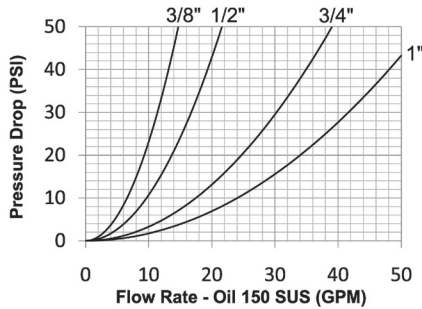


# TR-Series Hydraulic Couplings

## Interchange Data:

- TEMA European Interchange
- TEMA 3800, 5000, 7500, 10000 Series
- CEJN Series 525



## Materials:

- Machined components are manufactured using solid steel bar stock.
- Stainless steel balls, retaining rings, and springs maximize corrosion resistance and extend service life.
- Steel componentry is plated using ROHS Compliant Trivalent Chrome.
- Steel coupler sleeves are hardened to resist deformation and maximize service life.
- Steel nipples are hardened to provide heavy duty performance.

## Seal Components:

- Nitrile (Buna-N) seals are standard, providing a temperature range of **-40°F to 250°F (-40°C to 121°C)**
- Couplers have a redundant O-ring sealing system (dual O-rings with inner PTFE back-up ring).
- Valve seals are crimped in place to maintain integrity during excessive flow conditions and pressurized connection.

## Rated Pressure Chart:

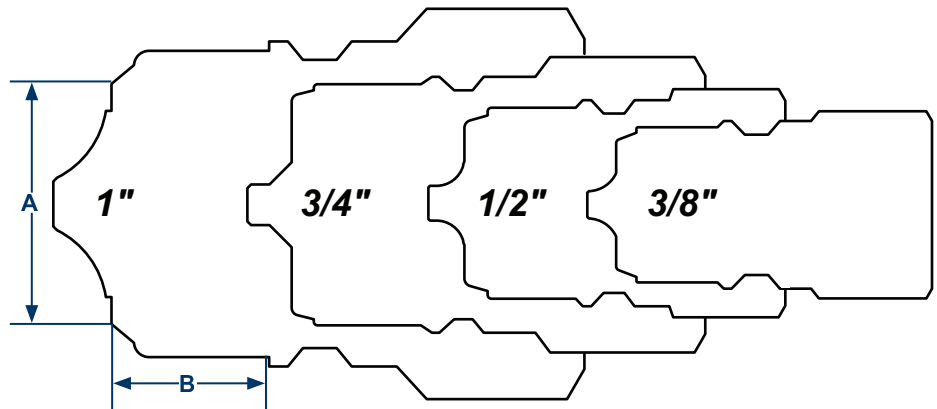
Body Size	R-Series TEMA European Interchange (Connected)			
	Steel Coupler/Plug			
	Maximum Working		Burst	
	PSI	Bar	PSI	Bar
3/8"	5,000	345	20,000	1,400
1/2"	4,000	275	16,500	1,100
3/4"	4,000	275	15,400	1,000
1"	3,200	220	12,800	900

## Technical Specifications:

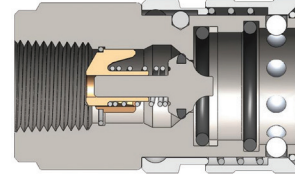
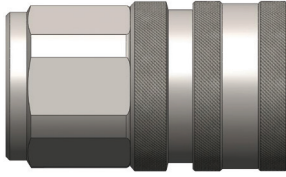
Body Size	Interchange Standards				Functional Parameters				
	U.S. Military	U.S. Government	International Standards	ANSI/NFPA Standards	Locking Ball Quantity	Air Inclusion	Fluid Loss	Vacuum Inch HG	Flow $\Delta P = 22$ PSI
3/8"	-	-	-	-	9	2.8cc	1.9cc	28	10 GPM
1/2"	-	-	-	-	9	3.9cc	3.1cc	28	15 GPM
3/4"	-	-	-	-	9	10.5cc	10.1cc	28	26 GPM
1"	-	-	-	-	9	14.7cc	14.2cc	28	36 GPM

## TR Interchange Profiles

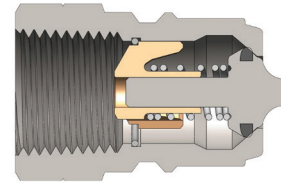
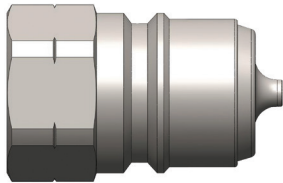
Body Size	A	B
3/8"	11/16"	9/16"
1/2"	3/4"	5/8"
3/4"	1-1/8"	11/16"
1"	1-1/4"	13/16"



## TR-Series Hydraulic Couplings



Body Size	TR-Series TEMA European Interchange Coupler (Female Threads)									
	Part Detail			Length		Maximum OD		Hex mm	Package Qty	
	Part Number	Threads	Material	Inch	mm	Inch	mm		Bag	Box
3/8"	<b>3TRF3</b>	3/8" - 18 NPTF	steel	2.52	64.0	1.38	35.0	30	10	50
3/8"	<b>3TRBF3</b>	3/8" - 19 BSPP	steel	2.52	64.0	1.38	35.0	30	10	50
1/2"	<b>4TRF4</b>	1/2" - 14 NPTF	steel	2.62	66.5	1.57	40.0	36	5	25
1/2"	<b>4TRBF4</b>	1/2" - 14 BSPP	steel	2.62	66.5	1.57	40.0	36	5	25
3/4"	<b>6TRF6</b>	3/4" - 14 NPTF	steel	3.35	85.0	2.05	52.0	41	-	10
3/4"	<b>6TRBF6</b>	3/4" - 14 BSPP	steel	3.35	85.0	2.05	52.0	41	-	10
1"	<b>8TRF8</b>	1" - 11-1/2 NPTF	steel	3.90	99.0	2.56	65.0	55	-	10
1"	<b>8TRBF8</b>	1" - 11 BSPP	steel	3.90	99.0	2.56	65.0	55	-	10



Body Size	TR-Series TEMA European Interchange Nipple (Female Threads)									
	Part Detail			Length		Maximum OD		Hex mm	Package Qty	
	Part Number	Threads	Material	Inch	mm	Inch	mm		Bag	Box
3/8"	<b>TR3F3</b>	3/8" - 18 NPTF	steel	1.59	40.5	1.00	25.4	22	10	50
3/8"	<b>TR3BF3</b>	3/8" - 19 BSPP	steel	1.59	40.5	1.00	25.4	22	10	50
1/2"	<b>TR4F4</b>	1/2" - 14 NPTF	steel	1.63	41.5	1.23	31.1	27	5	25
1/2"	<b>TR4BF4</b>	1/2" - 14 BSPP	steel	1.63	41.5	1.23	31.1	27	5	25
3/4"	<b>TR6F6</b>	3/4" - 14 NPTF	steel	2.20	56.0	1.63	41.5	36	-	10
3/4"	<b>TR6BF6</b>	3/4" - 14 BSPP	steel	2.20	56.0	1.63	41.5	36	-	10
1"	<b>TR8F8</b>	1" - 11-1/2 NPTF	steel	2.48	63.0	2.09	53.0	46	-	10
1"	<b>TR8BF8</b>	1" - 11 BSPP	steel	2.48	63.0	2.09	53.0	46	-	10

Body Size	TR-Series TEMA European Coupler Seal Kits					
	Part Detail			Seal Kit Contents	Package Qty	
	Part Number	Coupler Style	Seal Material		Bag	Box
3/8"	<b>3TR-SKIT</b>	all	Nitrile	two O-rings and one PTFE back-up ring	1	25
1/2"	<b>4TR-SKIT</b>	all	Nitrile	two O-rings and one PTFE back-up ring	1	25
3/4"	<b>6TR-SKIT</b>	all	Nitrile	two O-rings and one PTFE back-up ring	1	25
1"	<b>8TR-SKIT</b>	all	Nitrile	two O-rings and one PTFE back-up ring	1	25

Please contact Dixon® for dust caps and dust plugs