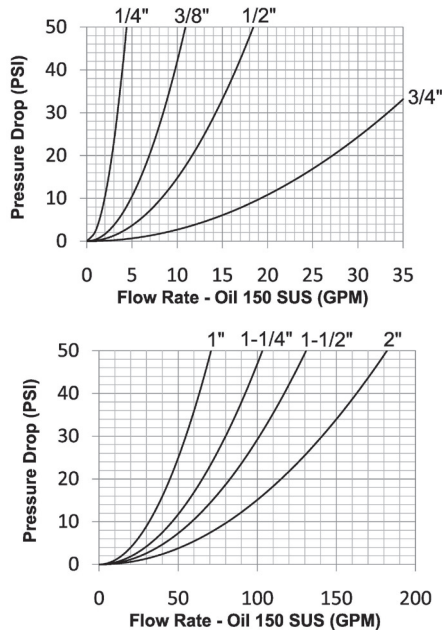


K-Series Hydraulic Couplings

Interchange Data:

- Interchangeable to ISO7241 Series 'A'
- Parker 6600-Series, Aeroquip/Eaton FD56 (5600)
- Faster ANV, Hansen HA15000, Safeway S56-Series



Materials:

- Machined components are manufactured using solid steel bar stock.
- Stainless steel balls, retaining rings, and springs maximize corrosion resistance and extend service life.
- Steel componentry is plated using ROHS Compliant Trivalent Chrome.
- Steel coupler sleeves are hardened to resist deformation and maximize service life.
- Steel nipples are hardened to provide heavy duty performance and resist brinelling.

Seal Components:

- Nitrile (Buna-N) seals are standard, providing a temperature range of **-40°F to 250°F (-40°C to 121°C)**
- Couplers have a PTFE Anti-Extrusion ring
- Valve seals are crimped in place to maintain integrity during excessive flow conditions and pressurized connection.

Rated Pressure Chart:

Body Size	K-Series ISO-A Interchange (Connected)			
	Steel Coupler/Plug			
	Maximum Working		Burst	
	PSI	Bar	PSI	Bar
1/4"	5,000	345	18,270	1,200
3/8"	4,000	275	18,270	1,200
1/2"	4,000	275	16,500	1,100
3/4"	4,000	275	14,800	1,000
1"	4,000	275	12,400	850
1-1/4"	3,000	200	12,600	850
1-1/2"	3,000	200	12,600	850
2"	1,450	100	5,800	400

Please contact Dixon® for 316 stainless working pressures

Technical Specifications:

Body Size	Interchange Standards				Functional Parameters				
	U.S. Military	U.S. Government	International Standards	ANSI/NFPA Standards	Locking Ball Quantity	Air Inclusion	Fluid Loss	Vacuum Inch HG	Flow ΔP = 22 PSI
1/4"	-	-	ISO7241 'A'	B93.113M-A	6	0.6cc	0.3cc	26.5	2.9 GPM
3/8"	-	-	ISO7241 'A'	B93.113M-A	9	2.6cc	1.8cc	26.5	7 GPM
1/2"	-	-	ISO7241 'A'	B93.113M-A	9	3.8cc	2.9cc	26.5	12 GPM
3/4"	-	-	ISO7241 'A'	B93.113M-A	12	10.8cc	9.7cc	26.5	28 GPM
1"	-	-	ISO7241 'A'	B93.113M-A	15	15.9cc	15.3cc	26.5	50 GPM
1-1/4"	-	-	ISO7241 'A'	B93.113M-A	16	31.7cc	29.1cc	26.5	70 GPM
1-1/2"	-	-	ISO7241 'A'	B93.113M-A	16	56.4cc	52.2cc	26.5	90 GPM
2"	-	-	ISO7241 'A'	B93.113M-A	15	N/A	N/A	26.5	120 GPM

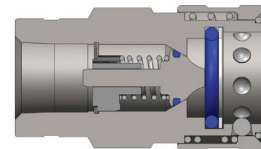
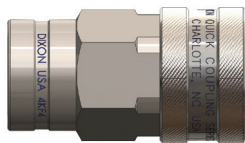
K-Series Hydraulic Couplings

Option Adders:

Body Size	Standard Seal Options						Kalrez® Seal Options		
	FKM	EPDM	FDA FKM	Mil-Nitrile	Fuel Nitrile	Silicone	4079	6375	7075
1/4"	F-	P-	D-	M-	JF-	S-	K4-	K6-	K7-
3/8"	F-	P-	D-	M-	JF-	S-	K4-	K6-	K7-
1/2"	F-	P-	D-	M-	JF-	S-	K4-	K6-	K7-
3/4"	F-	P-	D-	M-	JF-	S-	K4-	K6-	K7-
1"	F-	P-	D-	M-	JF-	S-	K4-	K6-	K7-
1-1/4"	N/A	N/A	N/A	N/A	N/A	N/A	N/A	N/A	N/A
1-1/2"	N/A	N/A	N/A	N/A	N/A	N/A	N/A	N/A	N/A
2"	N/A	N/A	N/A	N/A	N/A	N/A	N/A	N/A	N/A

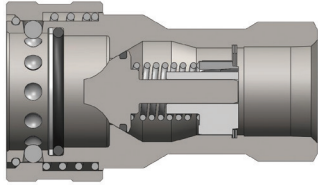
Body Size	Valve Options						Sleeve	Treatments
	Unvalved	Actuator*	Steel	Brass	303 SS	316 SS	Locking	Oxy-Clean
1/4"	-E	N/A	-ZV	-BV	N/A	N/A	-LS	-C1
3/8"	-E	-VA	-ZV	-BV	-SV	SSV	-LS	-C1
1/2"	-E	-VA	-ZV	-BV	-SV	SSV	-LS	-C1
3/4"	-E	-VA	-ZV	-BV	-SV	SSV	-LS	-C1
1"	-E	-VA	-ZV	-BV	-SV	SSV	-LS	-C1
1-1/4"	N/A	N/A	-ZV	N/A	N/A	N/A	N/A	N/A
1-1/2"	N/A	N/A	-ZV	N/A	N/A	N/A	N/A	N/A
2"	N/A	N/A	-ZV	N/A	N/A	N/A	N/A	N/A

* brass valve actuator

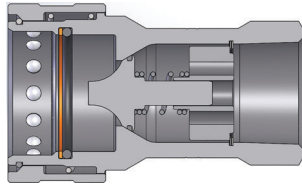


Body Size	K-Series ISO-A Interchange Coupler (Female Threads)									
	Part Detail			Length		Maximum OD		Hex Inch	Package Qty	
	Part Number	Threads	Material	Inch	mm	Inch	mm		Bag	Box
1/4"	2KF1	1/8" - 27 NPTF	steel	1.89	47.9	1.00	25.4	3/4"	10	50
1/4"	2KF2	1/4" - 18 NPTF	steel	1.89	47.9	1.00	25.4	3/4"	10	50
1/4"	2KF2-SS	1/4" - 18 NPTF	316 stainless	1.89	47.9	1.00	25.4	3/4"	10	50
1/4"	2KBF2	1/4" - 19 BSPP	steel	1.89	47.9	1.00	25.4	3/4"	10	50
1/4"	2KBF2-SS	1/4" - 19 BSPP	316 stainless	1.89	47.9	1.00	25.4	3/4"	10	50
1/4"	2KOF2	7/16" - 20 ORB	steel	1.89	47.9	1.00	25.4	3/4"	10	50
3/8"	3KF3	3/8" - 18 NPTF	steel	2.23	56.5	1.19	30.2	7/8"	10	50
3/8"	3KF3-SS	3/8" - 18 NPTF	316 stainless	2.23	56.5	1.19	30.2	7/8"	10	50
3/8"	3KBF3	3/8" - 19 BSPP	steel	2.23	56.6	1.19	30.2	7/8"	10	50
3/8"	3KBF3-SS	3/8" - 19 BSPP	316 stainless	2.23	56.6	1.19	30.2	7/8"	10	50
3/8"	3KOF3	9/16" - 18 ORB	steel	2.23	56.6	1.19	30.2	7/8"	10	50
1/2"	4KF4	1/2" - 14 NPTF	steel	2.62	66.5	1.49	37.8	1-1/16"	5	25
1/2"	4KF4-SS	1/2" - 14 NPTF	316 stainless	2.62	66.5	1.49	37.8	1-1/16"	5	25
1/2"	4KBF4	1/2" - 14 BSPP	steel	2.62	66.5	1.49	37.8	1-1/16"	5	25
1/2"	4KBF4-SS	1/2" - 14 BSPP	316 stainless	2.62	66.5	1.49	37.8	1-1/16"	5	25
1/2"	4KOF4	3/4" - 16 ORB	steel	2.62	66.5	1.49	37.8	1-1/16"	5	25
1/2"	4KOF5	7/8" - 14 ORB	steel	2.66	67.6	1.49	37.8	1-3/32"	5	25
1/2"	4KF6	3/4" - 14 NPTF	steel	2.64	66.9	1.49	37.8	1-5/16"	5	25

K-Series Hydraulic Couplings



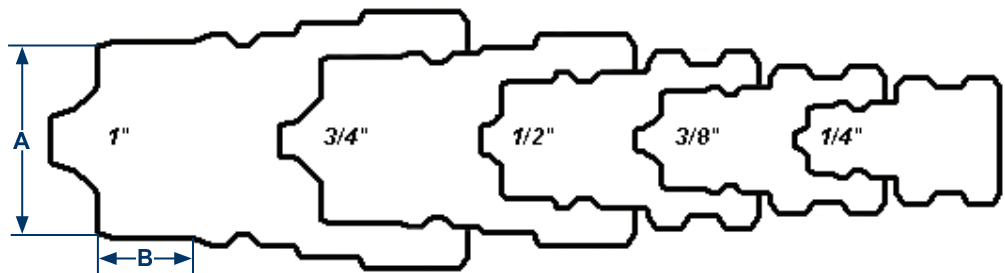
Body Size	K-Series ISO-A Interchange Coupler (Female Threads)									
	Part Detail			Length		Maximum OD		Hex Inch	Package Qty	
	Part Number	Threads	Material	Inch	mm	Inch	mm		Bag	Box
3/4"	6KF6	3/4" - 14 NPTF	steel	3.23	82.0	1.86	47.2	1-5/16"	-	10
3/4"	6KF6-SS	3/4" - 14 NPTF	316 stainless	3.23	82.0	1.86	47.2	1-5/16"	-	10
3/4"	6KBF6	3/4" - 14 BSPP	steel	3.23	82.0	1.86	47.2	1-5/16"	-	10
3/4"	6KBF6-SS	3/4" - 14 BSPP	316 stainless	3.23	82.0	1.86	47.2	1-5/16"	-	10
3/4"	6KOF6	1-1/16" - 12 ORB	steel	3.23	82.0	1.86	47.2	1-5/16"	-	10
1"	8KF8	1" - 11-1/2 NPTF	steel	3.88	98.6	2.10	53.3	1-5/8"	-	10
1"	8KF8-SS	1" - 11-1/2 NPTF	316 stainless	3.88	98.6	2.10	53.3	1-5/8"	-	10
1"	8KBF8	1" - 11 BSPP	steel	3.88	98.6	2.10	53.3	1-5/8"	-	10
1"	8KBF8-SS	1" - 11 BSPP	316 stainless	3.88	98.6	2.10	53.3	1-5/8"	-	10
1"	8KOF8	1-5/16" - 12 ORB	steel	3.88	98.6	2.10	53.3	1-5/8"	-	10



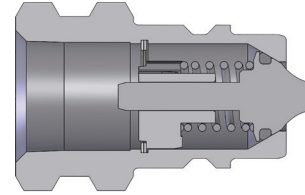
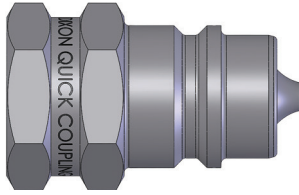
Body Size	K-Series ISO-A Interchange Coupler (Female Threads)									
	Part Detail			Length		Maximum OD		Hex Inch	Package Qty	
	Part Number	Threads	Material	Inch	mm	Inch	mm		Bag	Box
1-1/4"	10KF10	1-1/4" - 11-1/2 NPT	steel	4.61	117.0	2.76	70.0	2"	-	10
1-1/4"	10KBF10	1-1/4" - 11 BSPP	steel	4.61	117.0	2.76	70.0	2"	-	10
1-1/2"	12KF12	1-1/2" - 11-1/2 NPT	steel	5.24	133.0	3.33	84.5	2-3/8"	-	1
1-1/2"	12KBF12	1-1/2" - 11 BSPP	steel	5.24	133.0	3.33	84.5	2-3/8"	-	1
2"	16KF16	2" - 11-1/2 NPT	steel	6.50	165.0	3.94	100.0	3"	-	1
2"	16KBF16	2" - 11 BSPP	steel	6.50	165.0	3.94	100.0	3"	-	1

Body Size	A	B
1/4"	7/16"	1/4"
3/8"	11/16"	3/8"
1/2"	13/16"	3/8"
3/4"	1 1/8"	5/8"
1"	1 3/8"	13/16"
1-1/4"	1-11/16"	1"
1-1/2"	2-1/16"	1-3/16"
2"	2-7/16"	1-5/16"

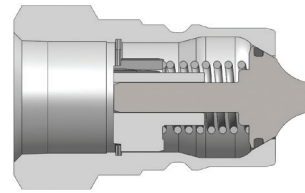
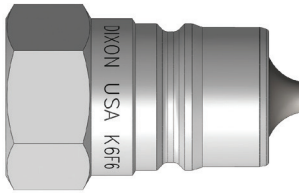
K Profiles



K-Series Hydraulic Couplings



Body Size	K-Series ISO-A Interchange Nipple (Female Threads)									
	Part Detail			Length		Maximum OD		Hex Inch	Package Qty	
	Part Number	Threads	Material	Inch	mm	Inch	mm		Bag	Box
1/4"	<i>K2F1</i>	1/8" - 27 NPTF	steel	1.22	31.0	0.87	22.1	3/4"	10	50
1/4"	<i>K2F2</i>	1/4" - 18 NPTF	steel	1.22	31.0	0.87	22.1	3/4"	10	50
1/4"	<i>K2F2-SS</i>	1/4" - 18 NPTF	316 stainless	1.22	31.0	0.87	22.1	3/4"	10	50
1/4"	<i>K2BF2</i>	1/4" - 19 BSPP	steel	1.22	31.0	0.87	22.1	3/4"	10	50
1/4"	<i>K2BF2-SS</i>	1/4" - 19 BSPP	316 stainless	1.22	31.0	0.87	22.1	3/4"	10	50
1/4"	<i>K2OF2</i>	7/16" - 20 ORB	steel	1.22	31.0	0.87	22.1	3/4"	10	50
3/8"	<i>K3F3</i>	3/8" - 18 NPTF	steel	1.70	43.2	0.97	24.6	7/8"	10	50
3/8"	<i>K3F3-SS</i>	3/8" - 18 NPTF	316 stainless	1.70	43.2	0.97	24.6	7/8"	10	50
3/8"	<i>K3BF3</i>	3/8" - 19 BSPP	steel	1.70	43.2	0.97	24.6	7/8"	10	50
3/8"	<i>K3BF3-SS</i>	3/8" - 19 BSPP	316 stainless	1.70	43.2	0.97	24.6	7/8"	10	50
3/8"	<i>K3OF3</i>	9/16" - 18 ORB	steel	1.70	43.2	0.97	24.6	7/8"	10	50
1/2"	<i>K4F4</i>	1/2" - 14 NPTF	steel	1.77	45.0	1.23	31.2	1-1/16"	5	25
1/2"	<i>K4F4-SS</i>	1/2" - 14 NPTF	316 stainless	1.77	45.0	1.23	31.2	1-1/16"	5	25
1/2"	<i>K4BF4</i>	1/2" - 14 BSPP	steel	1.77	45.0	1.23	31.2	1-1/16"	5	25
1/2"	<i>K4BF4-SS</i>	1/2" - 14 BSPP	316 stainless	1.77	45.0	1.23	31.2	1-1/16"	5	25
1/2"	<i>K4OF4</i>	3/4" - 16 ORB	steel	1.77	45.0	1.23	31.2	1-1/16"	5	25
1/2"	<i>K4OF5</i>	7/8" - 14 ORB	steel	1.77	45.0	1.23	31.2	1-1/16"	5	25
1/2"	<i>K4F6</i>	3/4" - 14 NPTF	steel	1.77	45.0	1.37	34.8	1-3/16"	5	25



Body Size	K-Series ISO-A Interchange Nipple (Female Threads)									
	Part Detail			Length		Maximum OD		Hex Inch	Package Qty	
	Part Number	Threads	Material	Inch	mm	Inch	mm		Bag	Box
3/4"	<i>K6F6</i>	3/4" - 14 NPTF	steel	2.43	61.7	1.44	36.6	1-5/16"	-	10
3/4"	<i>K6F6-SS</i>	3/4" - 14 NPTF	316 stainless	2.43	61.7	1.44	36.6	1-5/16"	-	10
3/4"	<i>K6BF6</i>	3/4" - 14 BSPP	steel	2.43	61.7	1.44	36.6	1-5/16"	-	10
3/4"	<i>K6BF6-SS</i>	3/4" - 14 BSPP	316 stainless	2.43	61.7	1.44	36.6	1-5/16"	-	10
3/4"	<i>K6OF6</i>	1-1/16" - 12 ORB	steel	2.43	61.7	1.44	36.6	1-5/16"	-	10
1"	<i>K8F8</i>	1" - 11-1/2 NPTF	steel	2.87	72.9	1.79	45.5	1-5/8"	-	10
1"	<i>K8F8-SS</i>	1" - 11-1/2 NPTF	316 stainless	2.87	72.9	1.79	45.5	1-5/8"	-	10
1"	<i>K8BF8</i>	1" - 11 BSPP	steel	2.87	72.9	1.79	45.5	1-5/8"	-	10
1"	<i>K8BF8-SS</i>	1" - 11 BSPP	316 stainless	2.87	72.9	1.79	45.5	1-5/8"	-	10
1"	<i>K8OF8</i>	1-5/16" - 12 ORB	steel	2.87	72.9	1.79	45.5	1-5/8"	-	10
1-1/4"	<i>K10F10</i>	1-1/4" - 11-1/2 NPT	steel	2.95	75.0	2.31	58.7	2"	-	10
1-1/4"	<i>K10BF10</i>	1-1/4" - 11 BSPP	steel	2.95	75.0	2.31	58.7	2"	-	10
1-1/2"	<i>K12F12</i>	1-1/2" - 11-1/2 NPT	steel	3.29	83.5	2.74	69.6	2-3/8"	-	1
1-1/2"	<i>K12BF12</i>	1-1/2" - 11 BSPP	steel	3.29	83.5	2.74	69.6	2-3/8"	-	1
2"	<i>K16F16</i>	2" - 11-1/2 NPT	steel	4.13	105.0	3.46	87.9	3"	-	1
2"	<i>K16BF16</i>	2" - 11 BSPP	steel	4.13	105.0	3.46	87.9	3"	-	1

K-Series Hydraulic Couplings



Body Size	K-Series ISO-A Interchange Combination Dust Cap and Plug			
	Part Detail		Package Qty	
	Combination dust plug and cap	Material	Bag	Box
1/4"	2KDP-K2DC	Nitrile	1	25
3/8"	3KDP-K3DC	Nitrile	1	25
1/2"	see below			
3/4"	6KDP-K6DC	Nitrile	1	25
1"	8KDP-K8DC	Nitrile	1	25



Body Size	K-Series ISO-A Interchange Color Coded Dust Plug				
	Part Detail		Package Qty		
	Part Number	Color	Material	Bag	Box
1/2"	4KDP	black	Nitrile	1	25
1/2"	4K-R-DP	red	Nitrile	1	25
1/2"	4K-O-DP	orange	Nitrile	1	25
1/2"	4K-Y-DP	yellow	Nitrile	1	25
1/2"	4K-G-DP	green	Nitrile	1	25
1/2"	4K-B-DP	blue	Nitrile	1	25



Body Size	K-Series ISO-A Interchange Color Coded Dust Cap				
	Part Detail		Package Qty		
	Part Number	Color	Material	Bag	Box
1/2"	K4DC	black	Nitrile	1	25
1/2"	K4-R-DC	red	Nitrile	1	25
1/2"	K4-O-DC	orange	Nitrile	1	25
1/2"	K4-Y-DC	yellow	Nitrile	1	25
1/2"	K4-G-DC	green	Nitrile	1	25
1/2"	K4-B-DC	blue	Nitrile	1	25

Body Size	K-Series ISO-A Coupler Seal Kits					
	Part Detail			Seal Kit Contents	Package Qty	
	Part Number	Coupler Style	Seal Material		Bag	Box
1/4"	2K-SKIT	all	Nitrile	O-ring and PTFE anti-extrusion ring	1	25
3/8"	3K-SKIT	all	Nitrile	O-ring and PTFE anti-extrusion ring	1	25
1/2"	4K-SKIT	all	Nitrile	O-ring and PTFE anti-extrusion ring	1	25
3/4"	6K-SKIT	all	Nitrile	O-ring and PTFE anti-extrusion ring	1	25
1"	8K-SKIT	all	Nitrile	O-ring and PTFE anti-extrusion ring	1	25
1-1/4"	10K-SKIT	all	Nitrile	O-ring and PTFE anti-extrusion ring	1	25
1-1/2"	12K-SKIT	all	Nitrile	O-ring and PTFE anti-extrusion ring	1	25
2"	16K-SKIT	all	Nitrile	O-ring and PTFE anti-extrusion ring	1	25