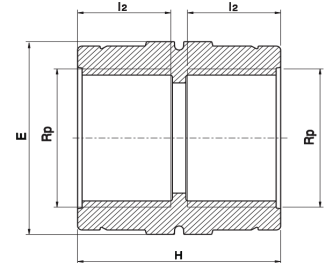


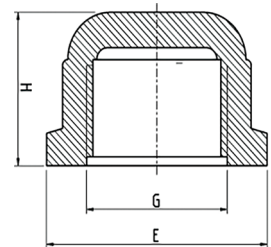
5010 - BSP Socket

Rp (mm)	Part No.	H (mm)	I2 (mm)	E (mm)	Weight (g)	Price \$ (ea)
1/2"	PCF-SOC-15	39	17	30	15	POR
3/4"	PCF-SOC-20	41	19	36	19	POR
1"	PCF-SOC-25	45	21	46	31	POR
1 1/4"	PCF-SOC-32	54	25	60	65	POR
1 1/2"	PCF-SOC-40	54	25	65	76	POR
2"	PCF-SOC-50	66	31	75	92	POR



5070 - BSP End Cap

Rp (mm)	Part No.	H (mm)	I2 (mm)	E (mm)	Weight (g)	Price \$ (ea)
3/4"	PTF-CAP-20	26	16	42	14	2.82
1"	PTF-CAP-25	32	19	50	27	3.47
1 1/4"	PTF-CAP-32	34	22	59	39	4.53
1 1/2"	PTF-CAP-40	34	21	65	43	6.10
2"	PTF-CAP-50	39	25	80	78	8.42



5170 - BSP End Plug

R (mm)	Part No.	H (mm)	I2 (mm)	E (mm)	Weight (g)	Price \$ (ea)
1/2"	PTF-HP-15	29	16	27	8	1.90
3/4"	PTF-HP-20	31	17	32	12	1.90
1"	PTF-HP-25	34	19	36	16	2.27
1 1/4"	PTF-HP-32	38	21	46	26	3.05
1 1/2"	PTF-HP-40	39	21	55	38	3.84
2"	PTF-HP-50	45	25	65	60	5.04

