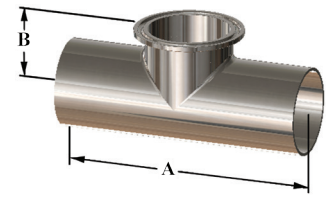


Weld x Weld x Clamp Short Outlet Tees

Size (inch)	Dim (A)	Dim (B)	PL Finish - SF1		PM Finish - SF4	
			Part No.	Price \$	Part No.	Price \$
½	95.250	25.400	T7WWMS-050PL	132.08	T7WWMS-050PM	175.51
¾	101.600	28.575	T7WWMS-075PL	132.42	T7WWMS-075PM	162.71
1	107.950	28.575	T7WWMS-100PL	117.38	T7WWMS-100PM	165.63
1½	120.650	34.925	T7WWMS-150PL	131.74	T7WWMS-150PM	185.16
2	146.050	41.275	T7WWMS-200PL	157.22	T7WWMS-200PM	215.01
2½	158.750	47.625	T7WWMS-250PL	217.25	T7WWMS-250PM	299.39
3	171.450	53.975	T7WWMS-300PL	269.99	T7WWMS-300PM	361.67
4	209.550	69.850	T7WWMS-400PL	397.81	T7WWMS-400PM	509.46
6	285.750	117.475	T7WWMS-600PL	1626.58	T7WWMS-600PM	2228.28



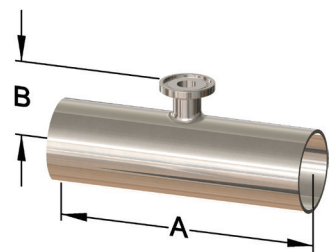
BPE Table #DT-15

Price Group: DS

AV14

Weld x Weld x Clamp Short Outlet Reducing Tees

Size (inch)	Dim (A)	Dim (B)	PL Finish - SF1		PM Finish - SF4	
			Part No.	Price \$	Part No.	Price \$
¾ x ½	101.60	25.400	T7RWWMS-075050PL	226.11	T7RWWMS-075050PM	220.61
1 x ½	107.95	28.575	T7RWWMS-100050PL	110.16	T7RWWMS-100050PM	171.44
1 x ¾	107.95	28.575	T7RWWMS-100075PL	113.82	T7RWWMS-100075PM	168.36
1½ x ½	120.65	34.925	T7RWWMS-150050PL	140.02	T7RWWMS-150050PM	221.42
1½ x ¾	120.65	34.925	T7RWWMS-150075PL	109.71	T7RWWMS-150075PM	212.72
1½ x 1	120.65	34.925	T7RWWMS-150100PL	99.21	T7RWWMS-150100PM	217.79
2 x ½	146.05	41.275	T7RWWMS-200050PL	135.62	T7RWWMS-200050PM	249.71
2 x ¾	146.05	41.275	T7RWWMS-200075PL	121.11	T7RWWMS-200075PM	249.71
2 x 1	146.05	41.275	T7RWWMS-200100PL	114.55	T7RWWMS-200100PM	258.10
2 x 1½	146.05	41.275	T7RWWMS-200150PL	120.96	T7RWWMS-200150PM	258.10
2½ x ½	158.75	47.625	T7RWWMS-250050PL	157.41	T7RWWMS-250050PM	323.44
2½ x ¾	158.75	47.625	T7RWWMS-250075PL	155.20	T7RWWMS-250075PM	323.44
2½ x 1	158.75	47.625	T7RWWMS-250100PL	147.72	T7RWWMS-250100PM	330.76
2½ x 1½	158.75	47.625	T7RWWMS-250150PL	153.06	T7RWWMS-250150PM	334.05
2½ x 2	158.75	47.625	T7RWWMS-250200PL	165.85	T7RWWMS-250200PM	359.98
3 x ½	171.45	53.975	T7RWWMS-300050PL	195.81	T7RWWMS-300050PM	405.53
3 x ¾	171.45	53.975	T7RWWMS-300075PL	182.24	T7RWWMS-300075PM	405.53
3 x 1	171.45	53.975	T7RWWMS-300100PL	177.83	T7RWWMS-300100PM	413.77
3 x 1½	171.45	53.975	T7RWWMS-300150PL	180.85	T7RWWMS-300150PM	413.77
3 x 2	171.45	53.975	T7RWWMS-300200PL	190.14	T7RWWMS-300200PM	440.07
3 x 2½	171.45	53.975	T7RWWMS-300250PL	203.69	T7RWWMS-300250PM	457.26
4 x ½	209.55	66.675	T7RWWMS-400050PL	335.13	T7RWWMS-400050PM	621.09
4 x ¾	209.55	66.675	T7RWWMS-400075PL	322.27	T7RWWMS-400075PM	621.09
4 x 1	209.55	66.675	T7RWWMS-400100PL	260.83	T7RWWMS-400100PM	566.88
4 x 1½	209.55	66.675	T7RWWMS-400150PL	261.83	T7RWWMS-400150PM	566.88
4 x 2	209.55	66.675	T7RWWMS-400200PL	271.24	T7RWWMS-400200PM	592.73
4 x 2½	209.55	66.675	T7RWWMS-400250PL	285.83	T7RWWMS-400250PM	603.97
4 x 3	209.55	66.675	T7RWWMS-400300PL	304.66	T7RWWMS-400300PM	613.87
6 x 3	285.75	92.075	T7RWWMS-600300PL	946.12	T7RWWMS-600300PM	1729.01
6 x 4	285.75	95.250	T7RWWMS-600400PL	1127.52	T7RWWMS-600400PM	1729.01



BPE Table #DT-14

Price Group: DS

AV14

Note: Not all sizes and finishes are stocked.

PL Finish - SF1

OD = 32R_s Mechanically Polished

ID = 20R_s Mechanically Polished

PM Finish - SF4

OD = 32R_s Mechanically Polished

ID = 15R_s Mechanically Polished & Electropolished

