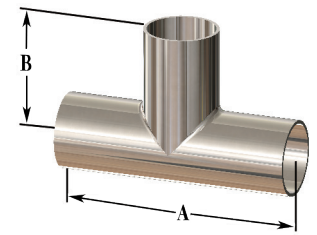


Weld x Weld x Weld Tees

Size (inch)	Dim (A)	Dim (B)	PL Finish - SF1		PM Finish - SF4	
			Part No.	Price \$	Part No.	Price \$
½	95.250	47.625	T7WWW-050PL	105.71	T7WWW-050PM	141.28
¾	101.600	50.800	T7WWW-075PL	113.90	T7WWW-075PM	149.47
1	107.950	53.975	T7WWW-100PL	84.39	T7WWW-100PM	124.78
1½	120.650	60.325	T7WWW-150PL	103.46	T7WWW-150PM	149.02
2	146.050	73.025	T7WWW-200PL	124.67	T7WWW-200PM	175.51
2½	158.750	79.375	T7WWW-250PL	173.49	T7WWW-250PM	249.46
3	171.450	85.725	T7WWW-300PL	215.34	T7WWW-300PM	297.49
4	209.550	104.775	T7WWW-400PL	348.54	T7WWW-400PM	450.21
6	285.750	142.875	T7WWW-600PL	1571.82	T7WWW-600PM	1396.98



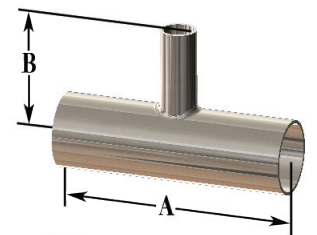
BPE Table #DT-9

Weld x Weld x Weld Reducing Tees

Price Group: DS

AV14

Size (inch)	Dim (A)	Dim (B)	PL Finish - SF1		PM Finish - SF4	
			Part No.	Price \$	Part No.	Price \$
¾ x ½	101.60	50.800	T7RWWW-075050PL	99.89	T7RWWW-075050PM	209.72
1 x ½	107.95	53.975	T7RWWW-100050PL	165.06	T7RWWW-100050PM	200.17
1 x ¾	107.95	53.975	T7RWWW-100075PL	153.26	T7RWWW-100075PM	202.75
1½ x ½	120.65	60.325	T7RWWW-150050PL	178.03	T7RWWW-150050PM	232.04
1½ x ¾	120.65	60.325	T7RWWW-150075PL	153.58	T7RWWW-150075PM	212.84
1½ x 1	120.65	60.325	T7RWWW-150100PL	135.33	T7RWWW-150100PM	189.48
2 x ½	146.05	66.675	T7RWWW-200050PL	179.57	T7RWWW-200050PM	251.29
2 x ¾	146.05	66.675	T7RWWW-200075PL	182.40	T7RWWW-200075PM	253.49
2 x 1	146.05	66.675	T7RWWW-200100PL	157.03	T7RWWW-200100PM	223.58
2 x 1½	146.05	66.675	T7RWWW-200150PL	157.31	T7RWWW-200150PM	226.28
2½ x ¾	158.75	73.025	T7RWWW-250075PL	261.46	T7RWWW-250075PM	361.79
2½ x 1	158.75	73.025	T7RWWW-250100PL	200.64	T7RWWW-250100PM	300.96
2½ x 1½	158.75	73.025	T7RWWW-250150PL	198.29	T7RWWW-250150PM	298.61
2½ x 2	158.75	73.025	T7RWWW-250200PL	194.47	T7RWWW-250200PM	294.79
3 x ½	171.45	79.375	T7RWWW-300050PL	284.24	T7RWWW-300050PM	389.39
3 x ¾	171.45	79.375	T7RWWW-300075PL	281.21	T7RWWW-300075PM	386.36
3 x 1	171.45	79.375	T7RWWW-300100PL	256.41	T7RWWW-300100PM	361.56
3 x 1½	171.45	79.375	T7RWWW-300150PL	253.72	T7RWWW-300150PM	358.87
3 x 2	171.45	79.375	T7RWWW-300200PL	249.79	T7RWWW-300200PM	354.94
3 x 2½	171.45	79.375	T7RWWW-300250PL	247.89	T7RWWW-300250PM	353.03
4 x ½	209.55	92.075	T7RWWW-400050PL	452.34	T7RWWW-400050PM	572.64
4 x ¾	209.55	92.075	T7RWWW-400075PL	454.70	T7RWWW-400075PM	575.00
4 x 1	209.55	92.075	T7RWWW-400100PL	362.91	T7RWWW-400100PM	483.20
4 x 1½	209.55	92.075	T7RWWW-400150PL	360.21	T7RWWW-400150PM	480.51
4 x 2	209.55	98.425	T7RWWW-400200PL	352.81	T7RWWW-400200PM	473.10
4 x 2½	209.55	98.425	T7RWWW-400250PL	356.29	T7RWWW-400250PM	476.58
4 x 3	209.55	98.425	T7RWWW-400300PL	361.79	T7RWWW-400300PM	482.08
6 x 3	285.75	123.825	T7RWWW-600300PL	1485.07	T7RWWW-600300PM	1870.42
6 x 4	285.75	130.175	T7RWWW-600400PL	1501.34	T7RWWW-600400PM	1486.42



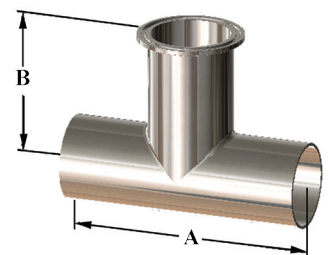
BPE Table #DT-10

Weld x Weld x Clamp Tees

Price Group: DS

AV14

Size (inch)	Dim (A)	Dim (B)	PL Finish - SF1		PM Finish - SF4	
			Part No.	Price \$	Part No.	Price \$
½	95.250	57.150	T7WWM-050PL	120.63	T7WWM-050PM	13.95
¾	101.600	60.325	T7WWM-075PL	122.09	T7WWM-075PM	145.42
1	107.950	66.675	T7WWM-100PL	125.68	T7WWM-100PM	120.23
1½	120.650	73.025	T7WWM-150PL	138.92	T7WWM-150PM	143.93
2	146.050	85.725	T7WWM-200PL	165.29	T7WWM-200PM	169.86
2½	158.750	92.075	T7WWM-250PL	221.07	T7WWM-250PM	241.08
3	171.450	98.425	T7WWM-300PL	283.91	T7WWM-300PM	288.24
4	209.550	120.650	T7WWM-400PL	412.06	T7WWM-400PM	438.71
6	285.750	180.975	T7WWM-600PL	1517.84	---	---



Price Group: DS

AV14

