

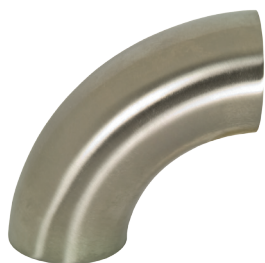
### 90° Polished Butt Weld Elbows With Tangents - B2S



Polished				
Size (inch)	316L Stainless Steel Part No.	Price \$	304 Stainless Steel Part No.	Price \$
½	B2S-R50P	28.81	B2S-G50P	27.96
¾	B2S-R75P	34.27	B2S-G75P	33.26
1	B2S-R100P	21.48	B2S-G100P	20.85
1½	B2S-R150P	29.13	B2S-G150P	28.28
2	B2S-R200P	41.16	B2S-G200P	39.96
2½	B2S-R250P	60.53	B2S-G250P	58.77
3	B2S-R300P	84.63	B2S-G300P	82.16
4	B2S-R400P	177.86	B2S-G400P	99.67
6	---	---	B2S-G600P	POR

Price Group: DS  
AV08

### 90° Polished Butt Weld Elbows Less Tangent - B2WCL



Polished 316L Stainless Steel		
Part No.	Size (inch)	Price \$
B2WCL-R100P	1	17.59
B2WCL-R150P	1½	24.37
B2WCL-R200P	2	35.96
B2WCL-R250P	2½	53.17
B2WCL-R300P	3	78.45
B2WCL-R400P	4	133.40
B2WCL-R600P	6	1014.02

Price Group: DS  
AV08

### 45° Polished Butt Weld Elbows With Tangents - B2KS



Polished 316L Stainless Steel		
Part No.	Size (inch)	Price \$
B2KS-R100P	1	19.71
B2KS-R150P	1½	27.79
B2KS-R200P	2	33.74
B2KS-R250P	2½	53.10
B2KS-R300P	3	68.06
B2KS-R400P	4	154.97

Price Group: DS  
AV08

### 45° Polished Butt Weld Elbows Less Tangents - B2WK



Polished 316L Stainless Steel		
Part No.	Size (inch)	Price \$
B2WK-R100P	1	15.34
B2WK-R150P	1½	19.47
B2WK-R200P	2	26.25
B2WK-R250P	2½	38.93
B2WK-R300P	3	57.96
B2WK-R400P	4	109.14

Price Group: DS  
AV08