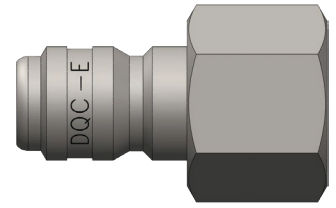
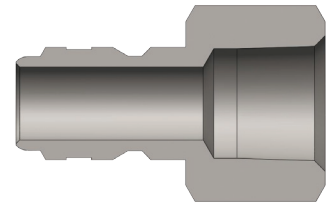


## E-Series Straight-Through Nipples

Size (inch)	Part No.	Thread Size (inch)	Body Material	Weight (kg)	Pkg Qty		Price \$ (ea)
					Bag	Box	
1/8	E1F1	1/8 - 27 NPTF	Steel	0.01	250	500	18.53
1/8	E1F1-B	1/8 - 27 NPTF	Brass	0.01	250	500	4.58
1/8	E1F1-S	1/8 - 27 NPTF	303 SS	0.01	250	500	6.10
1/4	E2F2	1/4 - 18 NPTF	Steel	0.03	50	200	3.16
1/4	E2F2-B	1/4 - 18 NPTF	Brass	0.03	50	200	5.37
1/4	E2F2-S	1/4 - 18 NPTF	303 SS	0.03	50	200	12.22
1/4	E2BF2-B	1/4 - 19 BSPP	Brass	0.03	50	200	22.89
3/8	E3F3	3/8 - 18 NPTF	Steel	0.05	50	200	6.20
3/8	E3F3-B	3/8 - 18 NPTF	Brass	0.05	50	200	7.88
3/8	E3F3-S	3/8 - 18 NPTF	303 SS	0.05	50	200	17.08
3/8	E3BF3-B	3/8 - 19 BSPP	Brass	0.05	50	200	18.51
1/2	E4F4	1/2 - 14 NPTF	Steel	0.09	35	140	7.84
1/2	E4F4-B	1/2 - 14 NPTF	Brass	0.10	35	140	11.30
1/2	E4F4-S	1/2 - 14 NPTF	303 SS	0.10	35	140	17.05
1/2	E4BF4-B	1/2 - 14 BSPP	Brass	0.10	35	140	23.03
3/4	E6F6	3/4 - 14 NPTF	Steel	0.14	25	100	20.93
3/4	E6F6-B	3/4 - 14 NPTF	Brass	0.14	25	100	18.36
3/4	E6F6-S	3/4 - 14 NPTF	303 SS	0.14	25	100	48.91
3/4	E6BF6-B	3/4 - 14 BSPP	Brass	0.14	25	100	17.79
1	E8F8	1 - 11 1/2 NPTF	Steel	0.22	25	50	25.91
1	E8F8-B	1 - 11 1/2 NPTF	Brass	0.23	25	50	21.95
1	E8F8-S	1 - 11 1/2 NPTF	303 SS	0.23	25	50	49.25
1	E8BF8-B	1 - 11 BSPP	Brass	0.22	25	50	33.10
1 1/4	E10F10	1 1/4 - 11 1/2 NPTF	Steel	0.38	-	10	67.09
1 1/4	E10F10-B	1 1/4 - 11 1/2 NPTF	Brass	0.38	-	10	70.77
1 1/4	E10F10-S	1 1/4 - 11 1/2 NPTF	303 SS	0.38	-	10	115.29
1 1/2	E12F12	1 1/2 - 11 1/2 NPTF	Steel	0.65	-	5	79.73
1 1/2	E12F12-B	1 1/2 - 11 1/2 NPTF	Brass	0.66	-	5	73.72
1 1/2	E12F12-S	1 1/2 - 11 1/2 NPTF	303 SS	0.66	-	5	153.23
2	E16F16	2 - 11 1/2 NPTF	Steel	0.86	-	1	186.87
2	E16F16-B	2 - 11 1/2 NPTF	Brass	0.86	-	1	102.29
2	E16F16-S	2 - 11 1/2 NPTF	303 SS	0.86	-	1	253.13



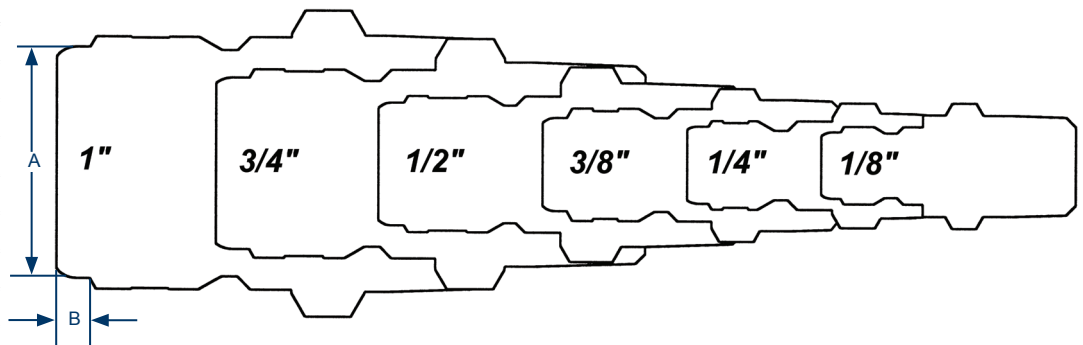
Female Thread



Price Group: PC  
AP01

## E-Series Profiles

Size (inch)	A (mm)	B (mm)
1/8	7.94	2.38
1/4	9.53	3.18
3/8	12.70	3.18
1/2	15.88	3.18
3/4	22.22	4.76
1	30.16	4.76
1 1/4	36.51	3.18
1 1/2	44.45	4.76
2	58.74	4.76



FOR TECHNICAL GUIDELINES PLEASE REFER TO PAGE 317

