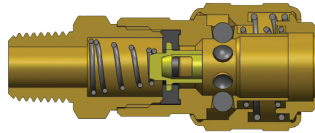


D-Series Automatic Industrial Interchange Safety Coupler



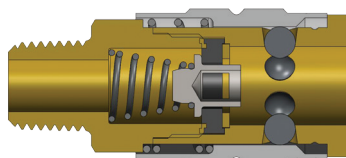
Male Thread



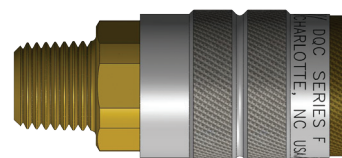
Body (inch)	Part No.	Thread (inch)	Body Material	Weight (kg)	Pkg Qty		Price \$ (ea)
					Bag	Box	
¼	2DM1-B	¼ - 27 NPTF	Brass	0.12	10	100	29.83
¼	2DM2-B	¼ - 18 NPTF	Brass	0.13	10	100	28.50
¼	2DM2-S	¼ - 18 NPTF	303 SS	0.13	10	100	84.20
¼	2DBM2-B	¼ - 19 BSPT	Brass	0.13	10	100	41.28
¼	2DM3-B	⅜ - 18 NPTF	Brass	0.13	10	100	26.69
¼	2DM3-S	⅜ - 18 NPTF	303 SS	0.13	10	100	95.73
¼	2DBM3-B	⅜ - 19 BSPT	Brass	0.13	10	100	50.38
⅜	3DM2-B	¼ - 18 NPTF	Brass	0.16	10	50	46.66
⅜	3DM3-B	⅜ - 18 NPTF	Brass	0.18	10	50	42.17
⅜	3DM3-S	⅜ - 18 NPTF	303 SS	0.18	10	50	153.53
⅜	3DBM3-B	⅜ - 19 BSPT	Brass	0.18	10	50	66.59
⅜	3DM4-B	½ - 14 NPTF	Brass	0.19	10	50	44.12
½	4DM3-B	⅜ - 18 NPTF	Brass	0.26	5	30	47.11
½	4DM4-B	½ - 14 NPTF	Brass	0.27	5	30	46.86
½	4DM4-S	½ - 14 NPTF	303 SS	0.28	5	30	160.13
½	4DBM4-B	½ - 14 BSPT	Brass	0.27	5	30	102.21
½	4DM6-B	¾ - 14 NPTF	Brass	0.30	5	30	50.56
¾	6DM4-B	½ - 14 NPTF	Brass	0.40	-	20	178.21
¾	6DM6-B	¾ - 14 NPTF	Brass	0.41	-	20	163.10
¾	6DM8-B	1 - 11½ NPTF	Brass	0.45	-	20	170.88

Price Group: PC
AN01

F-Series Manual Industrial Interchange Coupler



Male Thread



Body (inch)	Part No.	Thread (inch)	Body Material	Weight (kg)	Pkg Qty		Price \$ (ea)
					Bag	Box	
¼	2FM1-B	¼ - 27 NPTF	Brass	0.08	10	100	19.08
¼	2FM1-S	¼ - 27 NPTF	303 SS	0.08	10	100	73.24
¼	2FM2	¼ - 18 NPTF	Steel	0.08	10	100	18.00
¼	2FM2-B	¼ - 18 NPTF	Brass	0.09	10	100	14.61
¼	2FM2-S	¼ - 18 NPTF	303 SS	0.08	10	100	47.76
¼	2FBM2-B	¼ - 19 BSPT	Brass	0.09	10	100	19.13
¼	2FM3-B	⅜ - 18 NPTF	Brass	0.09	10	100	15.17
¼	2FM3-S	⅜ - 18 NPTF	303 SS	0.09	10	100	96.02
⅜	3FM2	¼ - 18 NPTF	Steel	0.12	10	50	26.87
⅜	3FM3	⅜ - 18 NPTF	Steel	0.12	10	50	25.91
⅜	3FM3-S	⅜ - 18 NPTF	303 SS	0.13	10	50	116.44
⅜	3FBM3	⅜ - 19 BSPT	Steel	0.12	10	50	51.38
⅜	3FM4	½ - 14 NPTF	Steel	0.13	10	50	27.95
½	4FM3	⅜ - 18 NPTF	Steel	0.19	5	30	32.64
½	4FM4	½ - 14 NPTF	Steel	0.20	5	30	50.90
½	4FM4-S	½ - 14 NPTF	303 SS	0.21	5	30	146.88
½	4FBM4	½ - 14 BSPT	Steel	0.20	5	30	51.89
½	4FM6	¾ - 14 NPTF	Steel	0.23	5	30	42.64

Price Group: PC
AN01

FOR TECHNICAL GUIDELINES PLEASE REFER TO PAGE 260



1300 134 651
dixonvalve.com.au

All prices exclude GST.
ADPL718

