

Hose Crimper

Features:

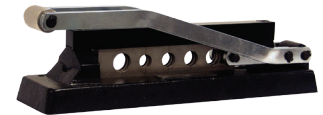
- Hose crimper provides "big tool" crimping advantages at a fraction of the cost.
- Rugged, portable and easy to use
- Optional dies up to 21mm (15mm I.D. hose available.).

| Crimper With Die | | | |
|------------------|---------------|-------------|----------|
| Part No. | Hose OD Range | Weight (kg) | Price \$ |
| 855 | 2-17.85 mm | 4.08 | 582.38 |
| 855A | 11-17 mm | 4.53 | 459.42 |

Price Group: SD
AN05

| Optional Dies | | | | | | |
|---------------|----------|----------|------|-----------------|------------------|----------|
| Die Part No. | Die Bore | Hose O.D | | Crimper No. 855 | Crimper No. 855A | Price \$ |
| | | from | to | | | |
| 856-1 | 15.9 | 16.3 | 17 | Standard | Standard | 115.78 |
| 856-2 | 14.7 | 15 | 15.9 | Standard | Standard | 75.94 |
| 856-3 | 13.5 | 13.7 | 14.3 | Standard | Standard | 75.47 |
| 856-5 | 17.4 | 17.5 | 18 | Standard | Optional | 77.84 |
| 856-7 | 11.1 | 11.4 | 11.9 | Optional | Standard | 115.47 |
| 856-8 | 19.1 | 19.3 | 19.8 | Optional | Optional | 140.15 |
| 856-9 | 20.6 | 20.8 | 21.4 | Optional | Optional | 83.74 |
| 856-10 | 9.5 | 9.8 | 10.3 | Optional | Optional | 114.58 |

Price Group: SD
AN05



860 Large Hose Crimper

Features:

- For crimping larger hoses from 22 mm to 40 mm OD.
- Crimps standard brass or aluminum ferrules.
- Sold without dies
- Order separate dies for each hose diameter.

| Part No. | Price \$ |
|----------|----------|
| 860 | 955.17 |

| Die Part No. | Hose OD | | | Finished Crimp Dimension | Price \$ |
|--------------|---------|-------|-------|--------------------------|----------|
| | OD | From | To | | |
| 861-22 | 17.5 | 0.687 | 0.765 | 11/16" | 80.47 |
| 861-23 | 18.3 | 0.718 | 0.796 | 23/32" | 78.08 |
| 861-24 | 19.1 | 0.750 | 0.828 | 3/4" | 78.76 |
| 861-25 | 19.8 | 0.781 | 0.860 | 25/32" | 80.47 |
| 861-26 | 20.6 | 0.812 | 0.890 | 13/16" | 79.72 |
| 861-27 | 21.4 | 0.843 | 0.921 | 27/32" | 78.08 |
| 861-28 | 22.2 | 0.875 | 0.953 | 7/8" | 80.47 |
| 861-29 | 23.0 | 0.906 | 0.985 | 29/32" | 78.08 |
| 861-30 | 23.8 | 0.937 | 1.010 | 15/16" | 80.47 |
| 861-31 | 24.6 | 0.968 | 1.040 | 31/32" | 80.47 |
| 861-32 | 25.4 | 1.000 | 1.070 | 1" | 80.46 |
| 861-33 | 26.2 | 1.031 | 1.110 | 1-1/32" | 80.46 |
| 861-34 | 27.0 | 1.062 | 1.114 | 1-1/16" | 80.46 |
| 861-36 | 28.6 | 1.125 | 1.208 | 1-1/8" | 80.22 |
| 861-38 | 30.2 | 1.187 | 1.265 | 1-3/16" | 80.01 |
| 861-40 | 31.8 | 1.250 | 1.321 | 1-1/4" | 80.46 |
| 861-42 | 33.3 | 1.312 | 1.390 | 1-5/16" | 80.46 |
| 861-46 | 36.5 | 1.437 | 1.551 | 1-7/16" | 78.68 |
| 861-48 | 38.1 | 1.500 | 1.578 | 1-1/2" | 80.22 |

Price Group: SD
AN05

