

'A' Type - Bellow Seal Stainless Steel 1000 PSI

minsup

Feature:	Standard coupling heads ensure the interchangeability of all sizes, regardless of whether the mating coupling is male, female or hose tail.
Options:	Other seal materials available on request NPT threads available for Male and Female threaded couplings

Size (inch)	Pkg Qty	Male BSP		Male NPT	
		Part No.	Price \$ (ea)	Part No.	Price (ea)
½	50	AM13BSPSTS-B	61.23	---	---
¾	50	AM20BSPSTS-B	109.29	---	---
1	50	AM25BSPSTS-B	61.23	AM25NPTSTS-B	69.53

Price Group: SD
AA01

Size (inch)	Pkg Qty	Female BSP		Female NPT	
		Part No.	Price \$ (ea)	Part No.	Price (ea)
½	50	AF13BSPSTS-B	61.23	---	---
¾	50	AF20BSPSTS-B	109.29	---	---
1	50	AF25BSPSTS-B	61.23	AF25NPTSTS-B	69.53

Price Group: SD
AA01

Size (inch)	Pkg Qty	Hose End	
		Part No.	Price \$ (ea)
½	50	AH13STS-B	61.23
¾	50	AH20STS-B	114.51
1	50	AH25STS-B	114.51

Price Group: SD
AA01

For suitable clamps refer to page 126.

For crimped ferrules, refer to page 125.

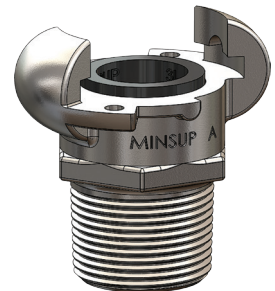
Size (inch)	Pkg Qty	King Crimp Hose End	
		Part No.	Price \$ (ea)
1	50	AH25STSKC-B	76.17

Price Group: SD
AA01

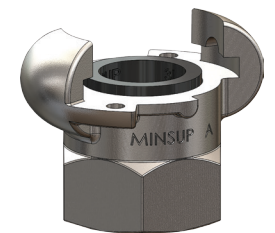
Note: Designed for use with King Crimp ferrules.

Pkg Qty	Blank End		
	Part No.	Seal Type	Price \$ (ea)
50	AB1032STS-B	Bellow	132.61

Price Group: MS
AA01



Male BSP



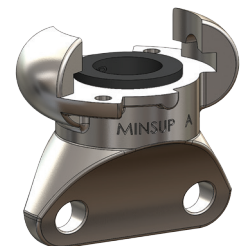
Female BSP



Hose End




King Crimp™
Hose End



Blank End

C

 • 'A' type bellow seal couplings are not recommended for use with Minsup™ standard seal couplings.
• **WARNING:** Never use 'A' Type Couplings for steam service! None of Dixon™'s catalogue information is to be interpreted to mean that this type of coupling is suitable for use on steam hose.

FOR SPECIFICATIONS, APPLICATION AND MATERIAL GUIDELINES PLEASE REFER TO PAGE 114



1300 134 651
dixonvalve.com.au

All prices exclude GST.
ADPL718