



The Right Connection®

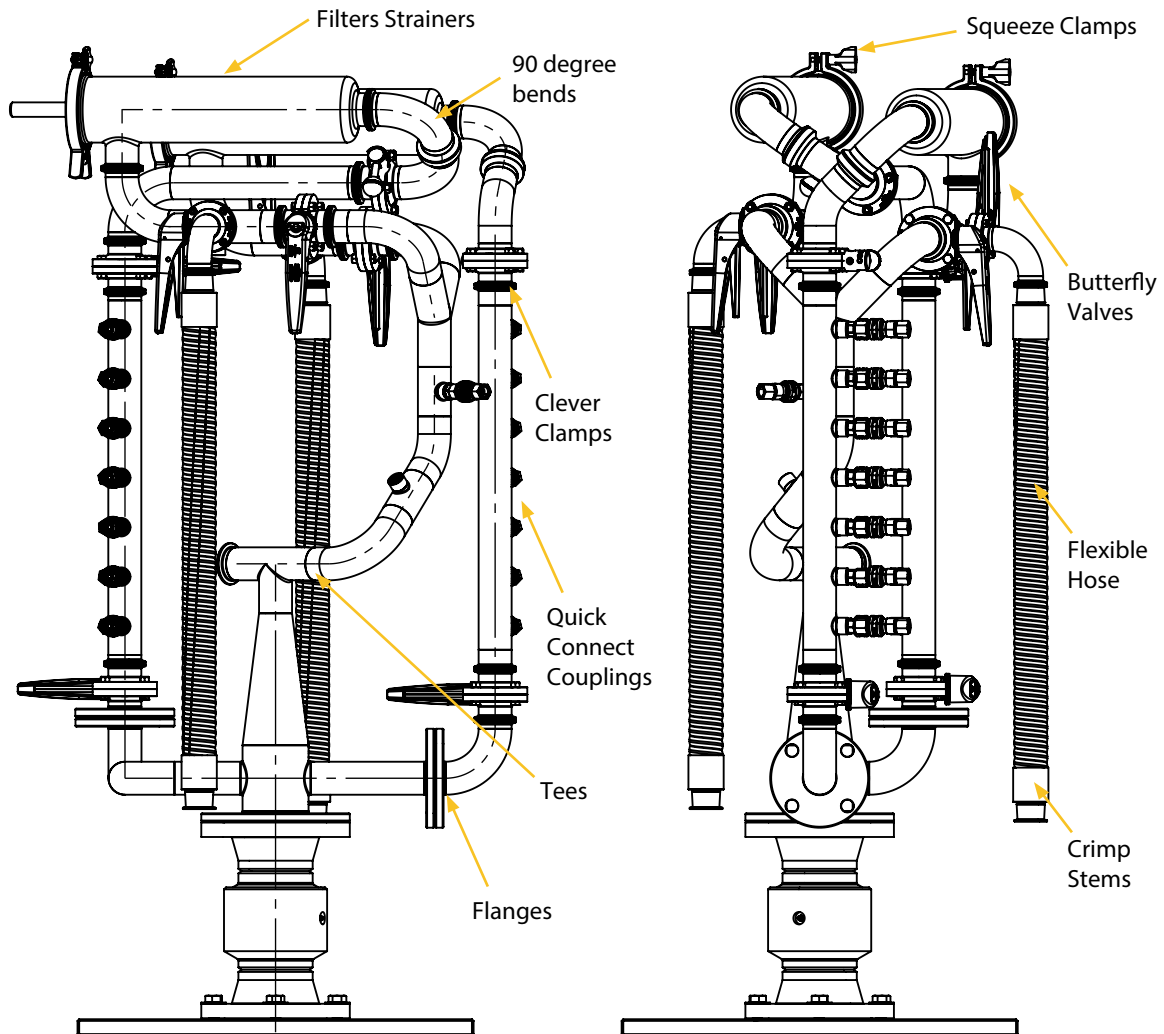
# Data Centre

## Product Range



# Build with Confidence & Power with Dixon Products.

At Dixon, we offer high-quality products engineered to enhance the durability, efficiency and safety of your data centre construction projects. Whether you're building from the ground up or upgrading existing infrastructure, our solutions are designed to meet the rigorous demands of modern data centres.



Delivering custom-engineered cooling solutions and components that directly address the unique heat dissipation challenges of data centres.

## B5105 Butterfly Valve

### Application

The B5105 Butterfly Valve range ensures reliable flow control for critical cooling and utility systems in data centers. Its smooth disc movement and low flow resistance maintain efficient circulation with water or glycol-based fluids, supporting stable, energy-efficient performance.

### Features

- 100% Hydraulic tested / 100% inspected
- All wetted surfaces are sanitary finished to 0.8µmRa
- Field serviceable (no special tools required)

### Product Temperature

- Maximum operating temperature 130°C
- Minimum operating temperature -10°C

### Working Pressure

- 10 Bar

### Materials

#### Construction

- Product contact components, Body and Disc: Forged 316L
- Non-product contact components: 304

#### Sealing

- Product contact component, Seals: EPDM, FKM, Silicone
- Non-product contact components, Bushings: Polyacetal

#### Connections

- Weld end
- Triclover Clamp end
- Other end connections on request

#### Surface Finish

- Product contact components: Ra ≤ 0.8
- Optional finishes: 0.38µm, 0.58µm, 0.635µm



## HAV-Series Air Relief Check Valve

### Application

The HAV-Series Air Relief Check Valve automatically removes air pockets and prevents vacuum conditions in data center cooling systems. This ensures consistent flow, protects pumps and lines, and optimizes efficiency for high-performance cooling networks.

### Features

- Replaceable ball and gasket
- Valve seals for pressure and vacuum

### Sizes

- 1-1/2" and 2"

### Specifications

- Clamp connections standard
- Valve data:
  - Maximum pressure: 145 PSI (10 bar)
  - Maximum operating temperature: 212°F (100°C)
- Materials of construction:
  - Product contact metal components: 304 stainless steel
  - Non-product contact metal components: 304 stainless steel
  - Product contact seals: EPDM (standard), others available upon request
- Ball material: Polypropylene (standard) or PTFE
- Ball material density:
  - Polypropylene: 0.033 lb/in<sup>3</sup>
  - PTFE: 0.078 lb/in<sup>3</sup>
- Surface finish - Product contact metal components: Ra ≤ 32



# Ball Valves - Encapsulated



## Application

Reliable encapsulated ball valve designed for critical cooling and fluid management systems in data centers. Ideal for use with ISO mount plate actuators for automated flow control.

## Features

- Balanced encapsulated construction minimises cold flow
- Live-loaded stem packing
- Precision stainless steel balls reduce torque and friction losses while extending seat life
- A lockable handle can prevent accidental actuation
- Standard internal entry blow-out proof stem design
- Full-port design matches ball and seat ports to tube ID for lower pressure drop and less turbulent flow
- Compact design for areas with tight space restrictions

## Materials

- PTFE seal
- CF8M 316 stainless steel
- ID polish is Ra 32 minimum
- Fully encapsulated construction produces bubble-tight seal
- Integral ISO 5211 mounting pad
- Optional seals available -25% carbon-reinforced tetrafluoroethylene, 15% glass-reinforced RTFE, 50% stainless steel-reinforced PTFE, and UHMW

Size		Part Numbers	
mm	inch	Weld End	Clamp End
12	½	BV2CV-050BB-A	BV2CV-050CC-A
20	¾	BV2CV-075BB-A	BV2CV-075CC-A
25	1	BV2CV-100BB-A	BV2CV-100CC-A
38	1½	BV2CV-150BB-A	BV2CV-150CC-A
50	2	BV2CV-200BB-A	BV2CV-200CC-A
65	2½	BV2CV-250BB-A	BV2CV-250CC-A
80	3	BV2CV-300BB-A	BV2CV-300CC-A
100	4	BV2CV-400BB-A	BV2CV-400CC-A

Product Group: VS03



Clamp End

# Mini Ball Valves

## Application

Compact ball valves designed for precision shut-off and flow control in data center cooling loops and auxiliary fluid systems. Ideal for installations where space is limited and uptime is critical.

## Design

- Full bore
- Blow-out proof stem design with chrome ball

## Material

- Body: nickel-plated brass
- Seat: PTFE seat
- Ball: chrome-plated brass

## End Connection

- Screwed female and male/female BSP
- ISO228 (equivalent to DIN259 and BS2779)

## Operating Temperature

- °0C - °90C

### Female x Female BSP

Size		Part Numbers	Working Pressure	
mm	inch		PSI	Bar
6	¼	MBVFF006	220	15
10	⅜	MBVFF010	220	15
15	½	MBVFF012	220	15
20	¾	MBVFF020	220	15

Product Group: AR01



### Male x Female BSP

Size		Part Numbers	Working Pressure	
mm	inch		PSI	Bar
6	¼	MBVMF006	220	15
10	⅜	MBVMF010	220	15
15	½	MBVMF012	220	15
20	¾	MBVMF020	220	15

Product Group: AR01



## Wafer & Lugged Butterfly Valves - 316 Stainless Steel

### Application

Designed for large-scale chilled water distribution and liquid cooling systems in data centers. These valves provide dependable isolation and flow control for primary and secondary cooling circuits, ensuring continuous operation in mission-critical environments.

### Features

- Lever operated
- Wafer and fully lugged
- ISO top for direct mounting of actuators
- Stainless steel lever
- Stainless steel notch plate

### Material

- Body: 316 stainless steel (CF8M)
- Stem: 316 stainless steel
- Seat: PTFE (EPDM encapsulated)

### End Connection

- Wafer type fits between Table D/E and ANSI150 flanges
- Lugged valve is to AS2129 Table E

### Working Pressure

- 145 PSI (10 bar)

### Accessories

- Gear operators, pneumatic and electric actuators

### Available Options

- Wafer and lugged 16 bar rated in Table E/ANSI150

Size		Part Numbers	
mm	inch	Wafer Table E	Lugged Table E
40	1½	BFVW-SS-040	-
50	2	BFVW-SS-050	BFVL-SS-050
65	2½	BFVW-SS-065	BFVL-SS-065
80	3	BFVW-SS-080	BFVL-SS-080
100	4	BFVW-SS-100	BFVL-SS-100
150	6	BFVW-SS-150	BFVL-SS-150
200 <sup>1</sup>	8	BFVW-SS-200	BFVL-SS-200

<sup>1</sup>DN200 has gear box operator as standard

Product Group: VS02



## Wafer & Lugged Butterfly Valves

### Application

Designed for large-scale chilled water distribution and liquid cooling systems in data centers. These valves provide dependable isolation and flow control for primary and secondary cooling circuits, ensuring continuous uptime in mission-critical environments.

### Features

- Lever or gear operated, ISO 5211 mounted for actuation

### End Connection

- Wafer fits Table E and ANSI 150/125 and PN16
- Lugged Table E

### Working Pressure

- 232 PSI (16 bar)

### Material

- Body: cast iron
- Trim: 316 stainless steel
- Seat: EPDM standard. Nitrile Buna, FKM and PTFE available on request

### Available Options

- <sup>1</sup>ANSI150 available
- <sup>2</sup>Gearbox operated
- \*Available on request

Size		Part Numbers			Face-to-Face (mm)
mm	inch	Lugged Table E <sup>1</sup>	Wafer EPDM Seat	Wafer NBR Seat	
50	2	LSSE050H	VBF-IBFW050	WDSE050H	43
65	2½	LSSE065H	VBF-IBFW065	WDSE065H	46
80	3	LSSE080H	VBF-IBFW080	WDSE080H	46
100	4	LSSE100H	VBF-IBFW100	WDSE100H	52
125	5	LSSE125H	VBF-IBFW125	WDSE125H	56
150	6	LSSE150H	VBF-IBFW150	WDSE150H	56
200	8	LSSE200H	VBF-IBFW200	WSSE200H	60
250	10	LSSE250H	VBF-IBFW250	WDSE250G <sup>2</sup>	68
300	12	LSSE300H	VBF-IBFW300	WDSE300G <sup>2</sup>	78
350	14	*	VBF-IBFW350 <sup>2</sup>	-	78
400	16	*	VBF-IBFW400 <sup>2</sup>	-	84
450	18	*	VBF-IBFW450 <sup>2</sup>	-	103
500	20	*	VBF-IBFW500 <sup>2</sup>	-	127
600	24	*	VBF-IBFW600 <sup>2</sup>	-	150

Product Group: VF05

Product Group: VF06



## Data Boss Hose

### Application

The Data Boss Hose is engineered for medium-duty cooling and fluid transfer systems in data centres, where reliability and safety are critical. Designed for use with water or water-glycol mixtures, this hose ensures efficient thermal management for servers and electronic components. Its halogen-free construction makes it ideal for sensitive environments where fire safety and low-toxicity standards are essential.

### Features

- Peroxide Cured
- Superior flexibility
- Kink proof
- Halogen free
- Fire retardant

### Hose Construction

- **Tube:** Peroxide cured EPDM rubber, black, smooth
- **Reinforcement:** 2 plies textile wrapped, 1 steel helix
- **Cover:** Peroxide cured EPDM rubber, black

### Temperature

- -40°C to 130°C

ID	OD	Part Numbers	Working Pressure PSI	Working Pressure Bar	Bend radius	Weight
25	36	A211025020	145	10	75	0.80
32	44	A211032020	145	10	90	1.10
38	50	A211038020	145	10	110	1.25
51	64	A211050020	145	10	130	1.80
63	76	A211065020	145	10	190	2.16
76	89	A211075020	145	10	230	2.58
102	118	A211100020	145	10	305	4.26



## FDA Hot Water Washdown (A226)

### Applications

Designed specifically for delivery of hot water for washdown applications in food processing facilities, packing houses, bottling plants, breweries and dairies.

### Features

- Ozone resistant
- Weather resistant
- Abrasion resistant
- FDA approved food grade compound

### Hose Construction

- Tube: NBR - white
- Cover: smooth NBR - blue
- Reinforcement: polyester yarn

### Temperature

- °20-C to °90C



Dimensions (mm)		Part Numbers			Pressures				Bend Radius (mm)	Weight (kg/mtr)
ID	OD	Cut Length	Coil 20m	Coil 120m	Working		Burst			
					PSI	Bar	PSI	Bar		
12.7	21.9	A226012	A226012020	A226012120	300	20	900	60	100	0.47
19.1	30.2	A226020	A226012020	A226020120	300	20	900	60	155	0.65
25.4	38.0	A226025	A226012520	A226025120	300	20	900	60	205	0.97

Product Code: DB29

## Applications

A lightweight suction and delivery hose, reinforced with a steel helix. Highly flexible with exceptional resistance to kinks, abrasion, and crushing. Perfect for use with vacuum pumps, agricultural machinery, irrigation systems, chemical plants, and for transferring foodstuffs and potable water.

## Features

- UV stabilised
- Abrasion resistant
- Non-toxic, food grade FDA-approved

## Hose Construction

- Cover: PVC non-toxic - transparent
- Tube: PVC non-toxic, smooth - transparent
- Reinforcement: embedded steel helix

## Temperature

°15-C to °60C

Dimensions (mm)		Part Numbers	Pressures				Vacuum (Bar)	Bend Radius (mm)	Weight (kg/mtr)
ID	OD		Working		Burst				
			PSI	Bar	PSI	Bar			
12.7	17.8	ARM012020	102	7	306	21	0.9	25	0.18
15.9	22.2	ARM016020	87	6	261	18	0.9	35	0.23
19.1	26.3	ARM020020	73	5	219	15	0.9	50	0.34
25.4	33.2	ARM025020	73	5	219	15	0.9	60	0.51
31.8	40.4	ARM032020	57	4	171	12	0.9	75	0.65
35.0	43.6	ARM035020	57	4	171	12	0.9	80	0.73
38.1	47.0	ARM038020	57	4	171	12	0.9	90	0.80
45.0	54.4	ARM045020	43	3	129	9	0.9	105	1.10
50.8	60.2	ARM050020	43	3	129	9	0.8	125	1.20
63.5	75.8	ARM063020	43	3	129	9	0.7	150	1.95
76.2	89.3	ARM080020	29	2	87	6	0.7	220	2.70
101.6	116.0	ARM100020	29	2	87	6	0.6	300	3.40
152.4	169.0	ARM150020	29	2	60	5	0.5	460	6.35



Product Code: DA14

**Delivering custom-engineered cooling solutions and components that directly address the unique heat dissipation challenges of data centres.**

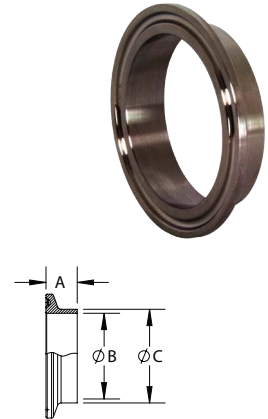


## Weld Ferrules

### Sanitary Clamp Short Welding Ferrules

Size		Part Numbers		A (mm)	B (mm)	C (mm)
mm	inch	SS316	SS304			
12.7	½	14WMP-R50	14WMP-G50	12.70	9.40	12.70
19.05	¾	14WMP-R75	14WMP-G75	12.70	15.75	19.05
25.4	1	14WMP-R100	14WMP-G100	12.70	22.10	25.40
38.1	1½	14WMP-R150	14WMP-G150	12.70	34.80	38.10
50.8	2	14WMP-R200	14WMP-G200	12.70	47.50	50.80
63.5	2½	14WMP-R250	14WMP-G250	12.70	60.20	63.50
76.2	3	14WMP-R300	14WMP-G300	12.70	72.90	76.20
101.6	4	14WMP-R400	14WMP-G400	15.75	97.28	101.6
152.4	6	14WMP-R600	14WMP-G600	19.05	146.81	152.4
203.2	8	14WMP-R800	14WMP-G800	22.35	197.61	203.2
254	10	14WMP-R1000	14WMP-G1000	22.35	247.90	254.0
304.8	12	14WMP-R1200	14WMP-G1200	22.35	298.70	304.8

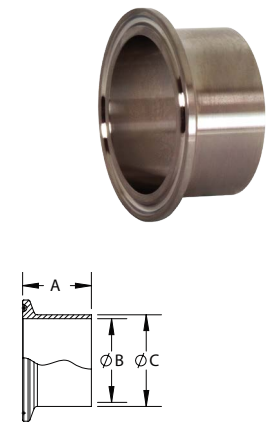
Product Group: AV03



### Sanitary Clamp Butt Welding Ferrules

Size		Part Numbers		A (mm)	B (mm)	C (mm)
mm	inch	SS316	SS304			
12.7	½	L14AM7-R50	L14AM7-G50	28.70	9.40	12.70
19.05	¾	L14AM7-R75	L14AM7-G75	28.70	15.75	19.05
25.4	1	L14AM7-R100	L14AM7-G100	28.70	22.10	25.40
38.1	1½	L14AM7-R150	L14AM7-G150	28.70	34.80	38.10
50.8	2	L14AM7-R100	L14AM7-G100	28.70	47.50	50.80
63.5	2½	L14AM7-R200	L14AM7-G200	28.70	60.20	63.50
76.2	3	L14AM7-R250	L14AM7-G250	28.70	72.90	76.20
101.6	4	L14AM7-R400	L14AM7-G400	28.70	97.28	101.6
152.4	6	L14AM7-R600	L14AM7-G600	38.10	146.81	152.4
203.2	8	L14AM7-R800	L14AM7-G800	38.10	197.61	203.2
254	10	L14AM7-R1000	L14AM7-G1000	44.45	247.90	254.0
304.8	12	L14AM7-R1200	L14AM7-G1200	44.45	298.70	304.8

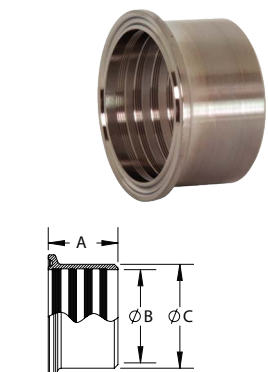
Product Group: AV03



### Sanitary Clamp Roll-On Ferrules

Size		Part Numbers		A (mm)	B (mm)	C (mm)
mm	inch	SS316	SS304			
25.4	1	14RMP-R100	14RMP-G100	19.05	25.65	29.46
38.1	1½	14RMP-R150	14RMP-G150	28.70	38.35	42.67
50.8	2	14RMP-R200	14RMP-G200	33.27	51.05	55.63
63.5	2½	14RMP-R250	14RMP-G250	35.05	63.75	68.83
76.2	3	14RMP-R300	14RMP-G300	36.58	76.45	81.79
101.6	4	14RMP-R400	14RMP-G400	38.10	101.85	108.20

Product Group: AV03



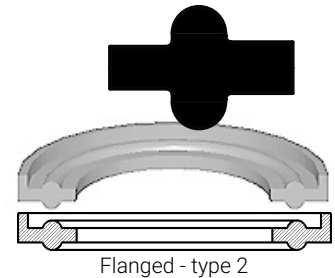
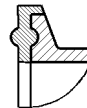
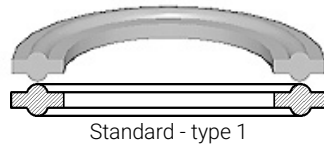
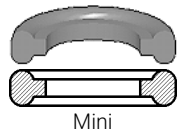
## Gaskets for Clamp Style Sanitary Fittings

### Specifications

- PSI service ratings for the sanitary clamps don't apply to connections (1" and above) using any PTFE gaskets, due to the potential for cold flow under normal operating conditions. PTFE gaskets, when used with any clamp, are likely to leak at pressures far below the published service ratings. This restriction does not apply to the fractionally sized 1/2" and 3/4" connections, due to their recessed, fully contained design

### Approval

- Gasket material approved by 3A, USDA and complies with FDA's 21CFR177.2600 and .1550



### Standard Gaskets - 1/2" & 3/4"

Size		Part Numbers					
mm	inch	Buna N	EPDM	FKM	Silicone	PTFE	White Seal
12.7	1/2	42MP-U50	42MP-E50	42MP-SFY50	42MP-XCPL50	42MP-G50	42MP-EW50
19.05	3/4	42MP-U75	42MP-E75	42MP-SFY75	42MP-XCPL75	42MP-G75	42MP-EW75

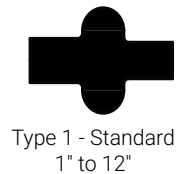
Product Group: AV03



### Standard Gaskets - 1" & Larger

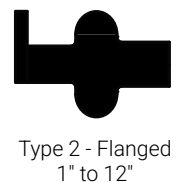
Size		Part Numbers					
mm	inch	Buna N	EPDM	FKM	Silicone	PTFE	White Seal
25.4	1	40MP-U100	40MP-E100	40MP-SFY100	40MP-XCPL100	40MP-G100	-
38.1	1 1/2	40MP-U150	40MP-E150	40MP-SFY150	40MP-XCPL150	40MP-G150	-
50.8	2	40MP-U200	40MP-E200	40MP-SFY200	40MP-XCPL200	40MP-G200	40MP-EW200
63.5	2 1/2	40MP-U250	40MP-E250	40MP-SFY250	40MP-XCPL250	40MP-G250	40MP-EW250
76.2	3	40MP-U300	40MP-E300	40MP-SFY300	40MP-XCPL300	40MP-G300	40MP-EW300
101.6	4	40MP-U400	40MP-E400	40MP-SFY400	40MP-XCPL400	40MP-G400	40MP-EW400
152.4	4	40MP-U600	40MP-E600	40MP-SFY600	40MP-XCPL600	40MP-G600	40MP-EW600
203.2	8	40MP-U800	-	-	-	-	-

Product Group: AV03



### Flanged Gaskets - 1" & Larger

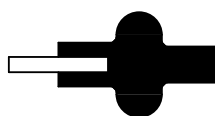
Size		Part Numbers		
mm	inch	EPDM	FKM	Silicone
25.4	1	40MPF-E100	40MPF-SFY100	40MPF-XCPL100
38.1	1 1/2	40MPF-E150	40MPF-SFY150	40MPF-XCPL150
50.8	2	40MPF-E200	40MPF-SFY200	40MPF-XCPL200
63.5	2 1/2	40MPF-E250	40MPF-SFY250	40MPF-XCPL250
76.2	3	40MPF-E300	40MPF-SFY300	40MPF-XCPL300
101.6	4	40MPF-E400	40MPF-SFY400	40MPF-XCPL400
152.4	6	40MPF-E600	40MPF-SFY600	40MPF-XCPL600
203.2	8	40MPF-E800	40MPF-SFY800	40MPF-XCPL800
254	10	40MPF-E1000	40MPF-SFY1000	40MPF-XCPL1000
304.8	12	40MPF-E1200	40MPF-SFY1200	40MPF-XCPL1200



Not recommended for use with bolted clamps

Product Group: AV03

## Mesh Screen Gaskets

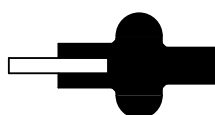


Type 3 - Mesh

Size		Part Numbers		
mm	inch	Buna N	EPDM	FKM
25.4	1	40MPS-U100	40MPS-E100	40MPS-SFY100
38.1	1½	40MPS-U150	40MPS-E150	40MPS-SFY150
50.8	2	40MPS-U200	40MPS-E200	40MPS-SFY200
63.5	2½	40MPS-U250	40MPS-E250	40MPS-SFY250
76.2	3	40MPS-U300	40MPS-E300	40MPS-SFY300
101.6	4	40MPS-U400	40MPS-E400	40MPS-SFY400

Product Group: AV03

## Perforated Gaskets - 0.33" Holes

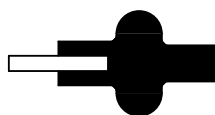


Type 3 - Perforated

Size		Part Numbers
mm	inch	Buna N
25.4	1	40MP-UP100
38.1	1½	40MP-UP150
50.8	2	40MP-UP200
63.5	2½	40MP-UP250
76.2	3	40MP-UP300
101.6	4	40MP-UP400

Product Group: AV03

## Orifice Gaskets - .125" Hole

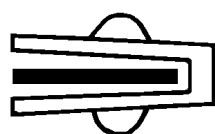


Type 3

Size		Part Numbers	
mm	inch	Buna N	FKM
25.4	1	A80MP-U100	A80MP-SFY100
38.1	1½	A80MP-U150	A80MP-SFY150
50.8	2	A80MP-U200	A80MP-SFY200
63.5	2½	A80MP-U250	A80MP-SFY250
76.2	3	A80MP-U300	A80MP-SFY300
101.6	4	A80MP-U400	A80MP-SFY400

Product Group: AV03

## Envelope Gaskets - PTFE



Size		Part Numbers	
mm	inch	EPDM Filler	FKM Filler
12.7	½	42MP-GRE50	42MP-GR50
19.05	¾	42MP-GRE75	42MP-GR75
25.4	1	42MP-GRE100	42MP-GR100
38.1	1½	42MP-GRE150	42MP-GR150
50.8	2	42MP-GRE200	42MP-GR200
63.5	2½	42MP-GRE250	42MP-GR250
76.2	3	42MP-GRE300	42MP-GR300
101.6	4	42MP-GRE400	42MP-GR400
152.4	6	42MP-GRE600	42MP-GR600
203.2	8	42MP-GRE800	42MP-GR800

Product Group: AV03



- PTFE is a material subject to plastic flow when cycled through heat and then cooled down in process lines, PTFE gaskets will not return to the original configuration, and it will continue to compress as the cycling continues. This plastic flow will allow leakage if clamp torques are not maintained

## Dixon™ Sanitary King Crimp™ Stems

### Application

Sanitary King Crimp™ stems are engineered for reliable use in data centre cooling and fluid transfer systems.

### Material

- 316 stainless steel



### Clamp End x Hose Tail

Size		Part Numbers
mm	inch	
25.4	1	CSSR100CS
38.1	1½	CSSR150CS
50.8	2	CSSR200CS
76.2	3	CSSR300CS
101.6	4	CSSR400CS

Product Group: AV07



### Wine x Hose Tail

Size		Part Numbers
mm	inch	
50.8	2	HA0850-KC
76.2	3	HA0851-KC
101.6	4	HA0852-KC

Product Group: AV07



### RJT x Hose Tail

Size		Part Numbers
mm	inch	
25.4	1	HA0224-KC
38.1	1½	HA0225-KC
50.8	2	HA0226-KC
63.5	2½	HA0227-KC
76.2	3	HA0228-KC
101.6	4	HA0294-KC

Product Group: AV07



### NZ RJT x Hose Tail

Size		Part Numbers
mm	inch	
38.1	1½	HA0225-NZKC
50.8	2	HA0226-NZKC
63.5	2½	HA0227-NZKC
76.2	3	HA0228-NZKC
101.6	4	HA0294-NZKC

Product Group: AV07



- Used with King Crimp™ lightweight ferrules, can also be used with standard ferrules & sleeves



### CIP Flat Face x Hose Tail

Size		Part Numbers
mm	inch	
25.4	1	HA0224-CIPKC
38.1	1½	HA0225-CIPKC
50.8	2	HA0226-CIPKC
63.5	2½	HA0227-CIPKC
76.2	3	HA0228-CIPKC
101.6	4	HA0294-CIPKC

Product Group: AV07



### Weld End x Hose Tail

Size		Part Numbers
mm	inch	
25.4	1	HA0833-KC
38.1	1½	HA0835-KC
50.8	2	HA0837-KC
63.5	2½	HA0839-KC
76.2	3	HA0841-KC
101.6	4	HA0843-KC

Product Group: AV07



### DIN 11851 x Hose Tail

Size		Part Numbers
mm	inch	
25.4	1	HA0239-KC
38.1	1½	HA0240-KC
50.8	2	HA0241-KC
63.5	2½	HA0242-KC
76.2	3	HA0243-KC
101.6	4	HA0234-KC

Product Group: AV07



## Light Weight External King Crimp™ Ferrules

### Material

- 304 stainless steel

Size		Part Numbers	Hose OD (mm)	
mm	inch		from	to
25.4	1	CF100-038SS	36.0	39.1
25.4	1	CF100-043SS	38	43.5
38.1	1½	CF150-052SS	48	52.8
38.1	1½	CF150-056SS	52	56.4
50.8	2	CF200-064SS	61	67
50.8	2	CF200-069SS	64	71.4
63.5	2½	CF250-078SS	73	80.7
63.5	2½	CF250-081SS	78	83.5
76.2	3	CF300-091SS	86	93.6
76.2	3	CF300-096SS	91	98
101.6	4	CF400-119SS	114	121.1
101.6	4	CF400-124SS	119	125.5

Product Group: AV07



- Used with King Crimp™ lightweight ferrules, can also be used with standard ferrules & sleeves

## °45 Butt Weld Elbows with Tangents - AS1528.3

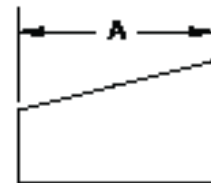
Size		Part Numbers		A (mm)	R (mm)	Nominal Wall (mm)
mm	inch	SS316	SS304			
12.70	½	B2KS-R50PA	B2KS-G50PA	97.90	19.05	1.6
19.05	¾	B2KS-R75PA	B2KS-G75PA	110.6	28.58	1.6
25.40	1	B2KS-R100PA	B2KS-G100PA	123.2	38.10	1.6 or 2
38.10	1½	B2KS-R150PA	B2KS-G150PA	148.7	57.15	1.6 or 2
50.80	2	B2KS-R200PA	B2KS-G200PA	174.1	76.20	1.6 or 2
63.50	2½	B2KS-R250PA	B2KS-G250PA	199.5	95.25	1.6 or 2
76.20	3	B2KS-R300PA	B2KS-G300PA	224.9	114.3	1.6 or 2
101.6	4	B2KS-R400PA	B2KS-G400PA	275.7	152.4	1.6 or 2



AS 1528.3:2019

## Polished Eccentric Weld Reducer - AS1528.3

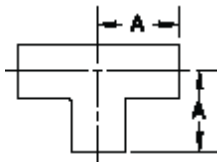
Size		Part Numbers		A (mm)	Nominal Wall (mm)
mm	inch	SS316	SS304		
19.05 x 12.7	¾ x ½	B32W-R7550PA	-	19.05	1.6
25.4 x 12.7	1 x ½	B32W-R10050PA	-	25.40	1.6 or 2
25.4 x 19.05	1 x ¾	B32W-R10075PA	-	25.40	1.6 or 2
38.1 x 12.7	1½ x ½	B32W-R15050PA	-	38.10	1.6 or 2
38.1 x 19.05	1½ x ¾	B32W-R15075PA	-	38.10	1.6 or 2
38.1 x 25.4	1½ x 1	B32W-R150100PA	B32W-G150100PA	38.10	1.6 or 2
50.8 x 12.7	2 x ½	B32W-R20050PA	-	50.80	1.6 or 2
50.8 x 19.05	2 x ¾	B32W-R20075PA	-W	50.80	1.6 or 2
50.8 x 25.4	2 x 1	B32W-R200100PA	B32W-G200100PA	50.80	1.6 or 2
50.8 x 38.1	2 x 1½	B32W-R200150PA	B32W-G200150PA	50.80	1.6 or 2
63.5 x 38.1	2½ x 1½	B32W-R250150PA	B32W-G250150PA	63.50	1.6 or 2
63.5 x 50.8	2½ x 2	B32W-R250200PA	B32W-G250200PA	63.50	1.6 or 2
76.2 x 25.4	3 x 1	B32W-R300100PA	B32W-G300100PA	76.20	1.6 or 2
76.2 x 38.1	3 x 1½	B32W-R300150PA	B32W-G300150PA	76.20	1.6 or 2
76.2 x 50.8	3 x 2	B32W-R300200PA	B32W-G300200PA	76.20	1.6 or 2
76.2 x 63.5	3 x 2½	B32W-R300250PA	B32W-G300250PA	76.20	1.6 or 2
101.6 x 38.1	4 x 1½	B32W-R400150PA	B32W-G400150PA	101.6	1.6 or 2
101.6 x 50.4	4 x 2	B32W-R400200PA	B32W-G400200PA	101.6	1.6 or 2
101.6 x 63.5	4 x 2½	B32W-R400250PA	B32W-G400250PA	101.6	1.6 or 2
101.6 x 76.2	4 x 3	B32W-R400300PA	B32W-G400300PA	101.6	1.6 or 2
152.4 x 76.2	6 x 3	B32W-R600300PA	B32W-G600300PA	152.4	1.6 or 2
152.4 x 101.6	6 x 4	B32W-R600400PA	B32W-G600400PA	152.4	1.6 or 2
203.2 x 101.6	8 x 4	B32W-R800400PA	B32W-G800400PA	203.2	1.6, 2 or 2.5
203.2 x 152.4	8 x 6	B32W-R800600PA	B32W-G800600PA	203.2	1.6, 2 or 2.5



AS 1528.3:2019



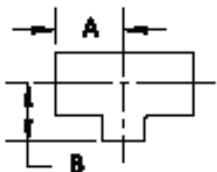
### Butt Weld Long Tee - AS1528.3



AS 1528.3:2019

Size		Part Numbers		A (mm)	Nominal Wall (mm)
mm	inch	SS316	SS304		
12.70	½	B7W-R50PA	B7W-G50PA	19.05	1.6
19.05	¾	B7W-R75PA	B7W-G75PA	28.58	1.6
25.40	1	B7W-R100PA	B7W-G100PA	38.10	1.6 or 2
38.10	1½	B7W-R150PA	B7W-G150PA	57.15	1.6 or 2
50.80	2	B7W-R200PA	B7W-G200PA	76.20	1.6 or 2
63.50	2½	B7W-R250PA	B7W-G250PA	95.25	1.6 or 2
76.20	3	B7W-R300PA	B7W-G300PA	114.3	1.6 or 2
101.6	4	B7W-R400PA	B7W-G400PA	152.4	1.6 or 2
152.4	6	B7W-R600PA	B7W-G600PA	228.6	1.6 or 2

### Butt Weld Reducing Tee - AS1528.3



AS 1528.3:2019

Size		Part Numbers		A (mm)	Nominal Wall (mm)
mm	inch	SS316	SS304		
19.05 x 12.7	¾ x ½	B7RWWW-R7550PA	-	19.05	1.6
25.4 x 12.7	1 x ½	B7RWWW-R10050PA	-	28.58	1.6 or 2
25.4 x 19.05	1 x ¾	B7RWWW-R10075PA	-	28.58	1.6 or 2
38.1 x 12.7	1½ x ½	B7RWWW-R15050PA	-	47.63	1.6 or 2
38.1 x 19.05	1½ x ¾	B7RWWW-R15075PA	-	47.63	1.6 or 2
38.1 x 25.4	1½ x 1	B7RWWW-R150100PA	B7RWWW-G150100PA	47.63	1.6 or 2
50.8 x 25.4	2 x 1	B7RWWW-R200100PA	B7RWWW-G200100PA	57.15	1.6 or 2
50.8 x 38.1	2 x 1½	B7RWWW-R200150PA	B7RWWW-G200150PA	57.15	1.6 or 2
63.5 x 38.1	2½ x 1½	B7RWWW-R250150PA	B7RWWW-G250150PA	76.20	1.6 or 2
63.5 x 50.8	2½ x 2	B7RWWW-R250200PA	B7RWWW-G250200PA	76.20	1.6 or 2
76.2 x 38.1	3 x 1½	B7RWWW-R300150PA	B7RWWW-G300150PA	95.25	1.6 or 2
76.2 x 50.8	3 x 2	B7RWWW-R300200PA	B7RWWW-G300200PA	95.25	1.6 or 2
76.2 x 63.5	3 x 2½	B7RWWW-R300250PA	B7RWWW-G300250PA	92.25	1.6 or 2
101.6 x 38.1	4 x 1½	B7RWWW-R400150PA	B7RWWW-G400150PA	114.3	1.6 or 2
101.6 x 50.4	4 x 2	B7RWWW-R400200PA	B7RWWW-G400200PA	114.3	1.6 or 2
101.6 x 63.5	4 x 2½	B7RWWW-R400250PA	B7RWWW-G400250PA	114.3	1.6 or 2
101.6 x 76.2	4 x 3	B7RWWW-R400300PA	B7RWWW-G400300PA	114.3	1.6 or 2
152.4 x 50.4	6 x 2	B7RWWW-R600200PA	B7RWWW-G600200PA	190.5	1.6 or 2
152.4 x 76.2	6 x 3	B7RWWW-R600300PA	B7RWWW-G600300PA	190.5	1.6 or 2
152.4 x 101.6	6 x 4	B7RWWW-R600400PA	B7RWWW-G600400PA	190.5	1.6 or 2

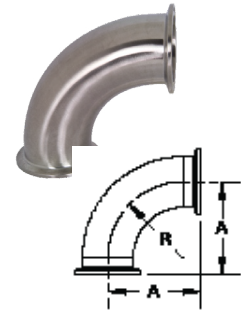
### °45 Clamp Elbows



Size		Part Numbers		A (mm)	R (mm)
mm	inch	SS316	SS304		
12.7	½	B2KMP-R50	-	24.6	28.7
19.05	¾	B2KMP-R75	-	24.6	28.7
25.4	1	B2KMP-R100	B2KMP-G100	24.4	38.1
38.1	1½	B2KMP-R150	B2KMP-G150	36.5	57.1
50.8	2	B2KMP-R200	B2KMP-G200	44.4	76.2
63.5	2½	B2KMP-R250	B2KMP-G250	52.3	95.2
76.2	3	B2KMP-R300	B2KMP-G300	60.2	114.3
101.6	4	B2KMP-R400	B2KMP-G400	79.5	152.4
152.4	6	B2KMP-R600	B2KMP-G600	117.6	228.6

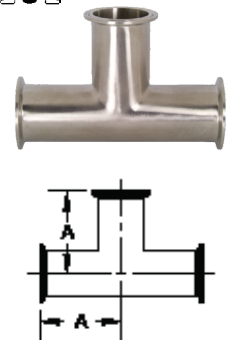


### °90 Clamp Elbows



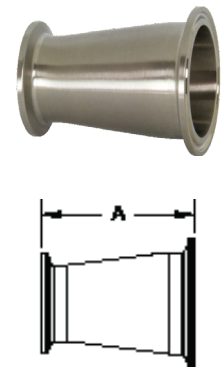
Size		Part Numbers		A (mm)	R (mm)
mm	inch	SS316	SS304		
12.7	½	B2CMP-R50	-	41.4	28.7
19.05	¾	B2CMP-R75	-	41.4	28.7
25.4	1	B2CMP-R100	B2CMP-G100	50.4	38.1
38.1	1½	B2CMP-R150	B2CMP-G150	69.8	57.1
50.8	2	B2CMP-R200	B2CMP-G200	88.9	76.2
63.5	2½	B2CMP-R250	B2CMP-G250	107.9	95.25
76.2	3	B2CMP-R300	B2CMP-G300	127.0	114.3
101.6	4	B2CMP-R400	B2CMP-G400	168.4	152.4
152.4	6	B2CMP-R600	B2CMP-G600	250.9	228.6

### Clamp Tees



Size		Part Numbers		A (mm)
mm	inch	SS316	SS304	
12.7	½	B7MP-R50	-	60.45
19.05	¾	B7MP-R75	-	63.50
25.4	1	B7MP-R100	B7MP-G100	60.45
38.1	1½	B7MP-R150	B7MP-G150	69.85
50.8	2	B7MP-R200	B7MP-G200	88.90
63.5	2½	B7MP-R250	B7MP-G250	88.90
76.2	3	B7MP-R300	B7MP-G300	95.25
101.6	4	B7MP-R400	B7MP-G400	114.3
152.4	6	B7MP-R600	B7MP-G600	165.1

### Clamp Concentric Reducers



Size		Part Numbers		A (mm)
mm	inch	SS316	SS304	
19.05 x 12.7	¾ x ½	B3114MP-R7550	-	50.8
25.4 x 12.7	1 x ½	B3114MP-R10050	-	76.2
25.4 x 19.05	1 x ¾	B3114MP-R10075	-	50.8
38.1 x 12.7	1½ x ½	B3114MP-R15050	-	127.0
38.1 x 19.05	1½ x ¾	B3114MP-R15075	-	101.6
38.1 x 25.4	1½ x 1	B3114MP-R150100	B3114MP-G150100	76.2
50.8 x 12.7	2 x ½	B3114MP-R20050	-	177.8
50.8 x 19.05	2 x ¾	B3114MP-R20075	-	152.4
50.8 x 25.4	2 x 1	B3114MP-R200100	B3114MP-G200100	127.0
50.8 x 38.1	2 x 1½	B3114MP-R200150	B3114MP-G200150	76.2
63.5 x 38.1	2½ x 1½	B3114MP-R250150	B3114MP-G250150	127.0
63.5 x 50.8	2½ x 2	B3114MP-R250200	B3114MP-G250200	76.2
76.2 x 25.4	3 x 1	B3114MP-R300100	B3114MP-G300100	228.6
76.2 x 38.1	3 x 1½	B3114MP-R300150	B3114MP-G300150	177.8
76.2 x 50.8	3 x 2	B3114MP-R300200	B3114MP-G300200	127.0
76.2 x 63.5	3 x 2½	B3114MP-R300250	B3114MP-G300250	76.2
101.6 x 38.1	4 x 1½	B3114MP-R400150	B3114MP-G400150	282.7
101.6 x 50.4	4 x 2	B3114MP-R400200	B3114MP-G400200	231.9
101.6 x 63.5	4 x 2½	B3114MP-R400250	B3114MP-G400250	181.1
101.6 x 76.2	4 x 3	B3114MP-R400300	B3114MP-G400300	130.3
152.4 x 50.8	6 x 2	B3114MP-R600200	B3114MP-G600200	174.7
152.4 x 76.2	6 x 3	B3114MP-R600300	B3114MP-G600300	174.7
152.4 x 101.6	6 x 4	B3114MP-R600400	B3114MP-G600400	177.8
203.2 x 101.6	8 x 4	B3114MP-R800400	B3114MP-G800400	190.5
203.2 x 152.4	8 x 6	B3114MP-R800600	B3114MP-G800600	196.8

# BSP Threaded Pipe Fittings



## Application

BSP Threaded Pipe Fittings are ideal for use in data centre cooling systems where secure, pressure-tight connections are essential for maintaining reliable chilled water or glycol-based loops. These fittings are designed for low-pressure applications and harsh environments, ensuring durability and leak-free performance to support continuous cooling for critical IT infrastructure.

## Body Material

- CF8M (316 stainless steel) manufactured to ASTM A35n

## Design Standards

- Generally in accordance with AS3673. Slight variations may occur where manufacturer's dimensions are used

## Thread Standard

- ISO 1-7 pipe threads where pressure-tight joints are made on the threads

## Design Standard

- Class 150lbs

## Working Pressure

- 300 PSI

### °90 Elbows - Female x Female

Thread Size BSP		Part Numbers
mm	inch	316 Stainless Steel
6	1/8	SS16EL006
8	1/4	SS16EL008
10	3/8	SS16EL010
15	1/2	SS16EL015
20	3/4	SS16EL020
25	1	SS16EL025
32	1 1/4	SS16EL032
40	1 1/2	SS16EL040
50	2	SS16EL050
65	2 1/2	SS16EL065
80	3	SS16EL080
100	4	SS16EL100



### °90 Elbows - Male x Female

Thread Size BSP		Part Numbers
mm	inch	316 Stainless Steel
6	1/8	SS16ELMF006
8	1/4	SS16ELMF008
10	3/8	SS16ELMF010
15	1/2	SS16ELMF015
20	3/4	SS16ELMF020
25	1	SS16ELMF025
32	1 1/4	SS16ELMF032
40	1 1/2	SS16ELMF040
50	2	SS16ELMF050
65	2 1/2	SS16ELMF065
80	3	SS16ELMF080
100	4	SS16ELMF100



### 16.6° Elbow - Male x Female

Thread Size BSP		Part Numbers
mm	inch	
25	1	SS16E16MF025
40	1 1/2	SS16E16MF040
50	2	SS16E16MF050
65	2 1/2	SS16E16MF065





### Equal Tees - Female



Thread Size BSP		Part Numbers
mm	inch	
6	1/8	SS16T006
8	1/4	SS16T008
10	3/8	SS16T010
15	1/2	SS16T015
20	3/4	SS16T020
25	1	SS16T025
32	1 1/4	SS16T032
40	1 1/2	SS16T040
50	2	SS16T050
65	2 1/2	SS16T065
80	3	SS16T080
100	4	SS16T0100

### Cross



Thread Size BSP		Part Numbers
mm	inch	
15	1/2	SS16CR015

### Hex Plugs



Thread Size BSP		Part Numbers
mm	inch	
8	1/4	SS16XP008
10	3/8	SS16XP010
15	1/2	SS16XP015
20	3/4	SS16XP020
25	1	SS16XP025
32	1 1/4	SS16XP032
40	1 1/2	SS16XP040
50	2	SS16XP050
65	2 1/2	SS16XP065
80	3	SS16XP080
100	4	SS16XP100

### Unions - Female x Female



Thread Size BSP		Part Numbers
mm	inch	
10	3/8	SS16FU010
15	1/2	SS16FU015
20	3/4	SS16FU020
25	1	SS16FU025
32	1 1/4	SS16FU032
40	1 1/2	SS16FU040
50	2	SS16FU050
65	2 1/2	SS16FU065
80	3	SS16FU080
100	4	SS16FU100



## Reducing Hex Bush



Thread Size BSP		Part Numbers
mm	inch	
8 x 6	1/4 x 1/8	SS16B0806
10 x 6	3/8 x 1/8	SS16B1006
10 x 8	3/8 x 1/4	SS16B1008
15 x 6	1/2 x 1/8	SS16B1506
15 x 8	1/2 x 1/4	SS16B1508
15 x 10	1/2 x 3/8	SS16B1510
20 x 8	3/4 x 1/4	SS16B2008
20 x 10	3/4 x 3/8	SS16B2010
20 x 15	3/4 x 1/2	SS16B2015
25 x 15	1 x 1/2	SS16B2515
25 x 20	1 x 3/4	SS16B2520
32 x 15	1 1/4 x 1/2	SS16B3215
32 x 20	1 1/4 x 3/4	SS16B3220
32 x 25	1 1/4 x 1	SS16B3225
40 x 15	1 1/2 x 1/2	SS16B4015
40 x 20	1 1/2 x 3/4	SS16B4020
40 x 25	1 1/2 x 1	SS16B4025
40 x 32	1 1/2 x 1 1/4	SS16B4032
50 x 25	2 x 1	SS16B5025
50 x 32	2 x 1 1/4	SS16B5032
50 x 40	2 x 1 1/2	SS16B5040
65 x 50	2 1/2 x 2	SS16B6550
80 x 50	3 x 2	SS16B8050
80 x 65	3 x 2 1/2	SS16B8065
100 x 50	4 x 2	SS16B100050
100 x 80	4 x 3	SS16B10080

## Sockets



Thread Size BSP		Part Numbers
mm	inch	
6	1/8	SS16S006
8	1/4	SS16S008
10	3/8	SS16S010
15	1/2	SS16S015
20	3/4	SS16S020
25	1	SS16S025
32	1 1/4	SS16S032
40	1 1/2	SS16S040
50	2	SS16S050
65	2 1/2	SS16S065
80	3	SS16S080
100	4	SS16S0100

### Caps



Thread Size BSP		Part Numbers
mm	inch	
20	$\frac{3}{4}$	SS16C020
25	1	SS16C025
32	$1\frac{1}{4}$	SS16C032
40	$1\frac{1}{2}$	SS16C040
50	2	SS16C050
80	3	SS16C080
100	4	SS16C100

### Hex Nipples



Thread Size BSP		Part Numbers
mm	inch	
6	$\frac{1}{8}$	SS16HN006
8	$\frac{1}{4}$	SS16HN008
10	$\frac{3}{8}$	SS16HN010
15	$\frac{1}{2}$	SS16HN015
20	$\frac{3}{4}$	SS16HN020
25	1	SS16HN025
32	$1\frac{1}{4}$	SS16HN032
40	$1\frac{1}{2}$	SS16HN040
50	2	SS16HN050
65	$2\frac{1}{2}$	SS16HN065
80	3	SS16HN080
100	4	SS16HN100

### Reducing Hex Nipples



Thread Size BSP		Part Numbers
mm	inch	
8 x 6	$\frac{1}{4} \times \frac{1}{8}$	SS16N00806
10 x 6	$\frac{3}{8} \times \frac{1}{8}$	SS16N01006
10 x 8	$\frac{3}{8} \times \frac{1}{4}$	SS16N01008
15 x 8	$\frac{1}{2} \times \frac{1}{4}$	SS16N01508
15 x 10	$\frac{1}{2} \times \frac{3}{8}$	SS16N01510
20 x 8	$\frac{3}{4} \times \frac{1}{4}$	SS16N02008
20 x 10	$\frac{3}{4} \times \frac{3}{8}$	SS16N02010
20 x 15	$\frac{3}{4} \times \frac{1}{2}$	SS16N02015
25 x 15	$1 \times \frac{1}{2}$	SS16N02515
25 x 20	$1 \times \frac{3}{4}$	SS16N02520
32 x 20	$1\frac{1}{4} \times \frac{3}{4}$	SS16N03220
32 x 25	$1\frac{1}{4} \times 1$	SS16N03225
40 x 20	$1\frac{1}{2} \times \frac{3}{4}$	SS16N04020
40 x 25	$1\frac{1}{2} \times 1$	SS16N04025
40 x 32	$1\frac{1}{2} \times 1\frac{1}{4}$	SS16N04032
50 x 25	$2 \times 1$	SS16N05025
50 x 32	$2 \times 1\frac{1}{4}$	SS16N05032
50 x 40	$2 \times 1\frac{1}{2}$	SS16N05040
65 x 50	$2\frac{1}{2} \times 2$	SS16N06550
80 x 50	$3 \times 2$	SS16N08050
80 x 65	$3 \times 2\frac{1}{2}$	SS16N08065
100 x 50	$4 \times 2$	SS16N10050
100 x 80	$4 \times 3$	SS16N10080



### Reducing Male BSP Hose Tails

Male BSP		Hose Tail		Part Numbers
mm	inch	mm	inch	316 Stainless Steel
15	½	20	¾	SS16HTR1520
20	¾	15	½	SS16HTR2015
20	¾	16	⅝	SS16HTR2016
25	1	16	⅝	SS16HTR2516
25	1	20	¾	SS16HTR2520
40	1½	32	1¼	SS16HTR4032
50	2	40	1½	SS16HTR5040
50	1	45	1¾	SS16HTR5045
65	2½	50	2	SS16HTR6550
80	3	65	2½	SS16HTR8065
100	4	80	3	SS16HTR10080



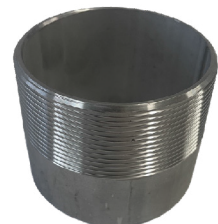
### Male BSP Hose Tails

Male BSP		Hose Tail		Part Numbers
mm	inch	mm	inch	316 Stainless Steel
6	⅛	6	⅛	SS16HT006
8	¼	8	¼	SS16HT008
10	⅜	10	⅜	SS16HT010
15	½	15	½	SS16HT015
20	¾	20	¾	SS16HT020
25	1	25	1	SS16HT025
32	1¼	32	1¼	SS16HT032
40	1½	40	1½	SS16HT040
50	2	50	2	SS16HT050
65	2½	65	2½	SS16HT065
80	3	80	3	SS16HT080
100	4	100	4	SS16HT0100
150	6	150	6	SS16HT0150



### Toe Weld Nipples

Thread Size BSP		Part Numbers
mm	inch	316 Stainless Steel
10	⅜	SS16TN010
15	½	SS16TN015
20	¾	SS16TN020
25	1	SS16TN025
32	1¼	SS16TN032
40	1½	SS16TN040
50	2	SS16TN050
65	2½	SS16TN065
80	3	SS16TN080
100	4	SS16TN010



## Holedall™ Clamp Type/External Crimp Stem

### Material

- 316 stainless steel

Size		Part Numbers
mm	inch	Male
25.4	1	HA0640
38.1	1½	HA0641
50.8	2	HA0642
63.5	2½	HA0643
76.2	3	HA0644
101.6	4	HA0645

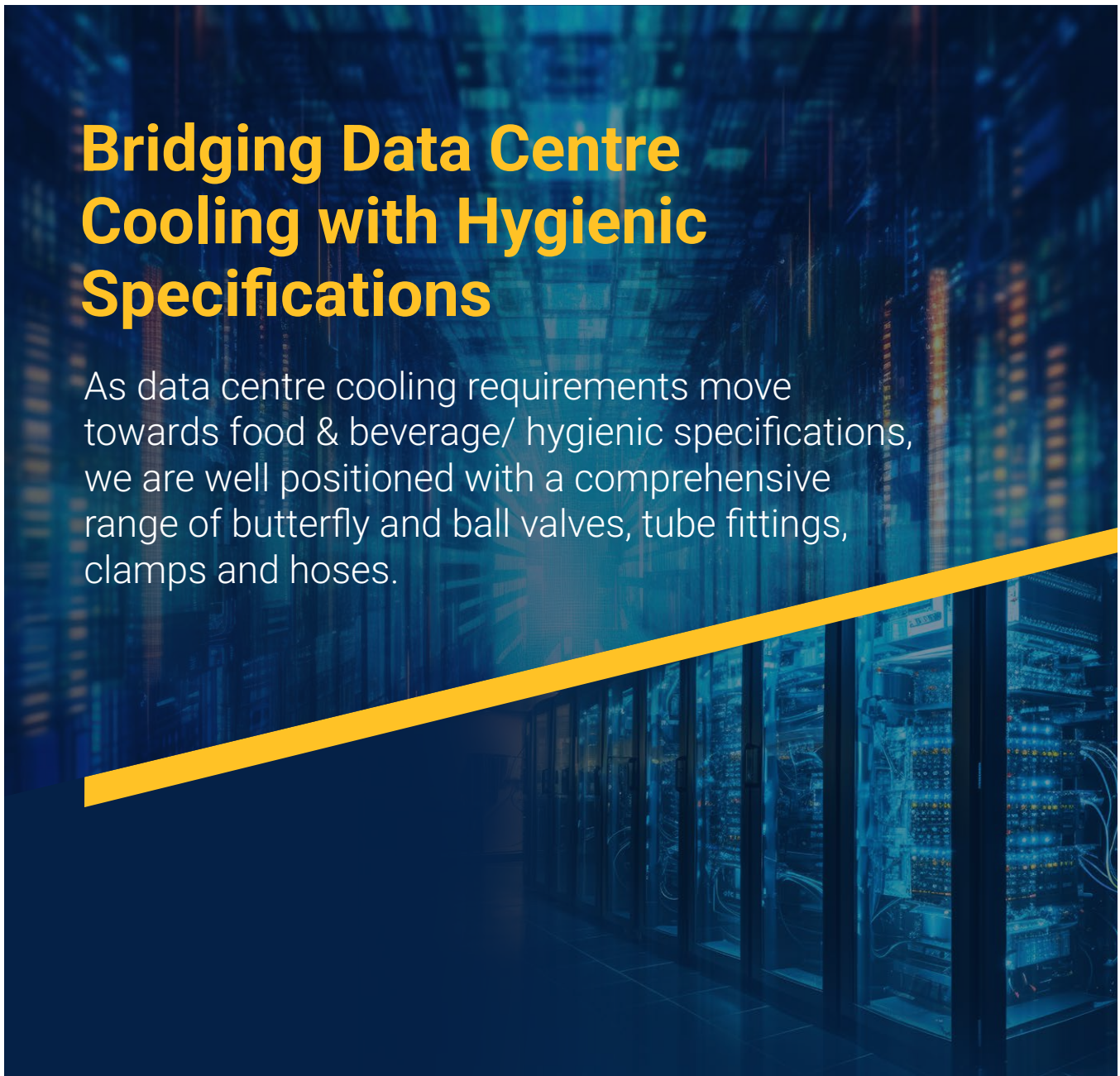
All stems are manufactured to suit inch bore hoses (not metric hose bores)

Product Group: AV07



## Bridging Data Centre Cooling with Hygienic Specifications

As data centre cooling requirements move towards food & beverage/ hygienic specifications, we are well positioned with a comprehensive range of butterfly and ball valves, tube fittings, clamps and hoses.



## King Crimp™ Style - Ferrules

### Application

Used in conjunction with Dixon's range of King Crimp™ hose tails, these ferrules are designed to provide secure, permanent connections for cooling and fluid transfer systems in data centres. The crimping process ensures a leak-free seal, reducing the risk of downtime and improving operational safety by eliminating potential catch points found in other clamp or fitting types. Ideal for environments where reliable connections are critical to maintaining consistent cooling performance for servers and electronic equipment.



### Features

- 250 PSI working pressure with King Crimp™ Camlocks
- 400 PSI working pressure with King Crimp™ ST Nipples

### Materials

- Carbon steel or 304 stainless steel

Hose ID	Hose OD (mm)		Part Numbers		Working Pressure (PSI)		Ferrule ID (mm)	Wall Thickness (mm)	Overall Length (mm)
	mm	from	to	Carbon Steel	Stainless Steel	Camlocks			
25	30.56	31.75	CF100-1CS	CF100-1SS	*	*	33.40	1.57	63.5
25	32.15	33.34	CF100-2CS	CF100-2SS	*	*	34.90	1.57	63.5
25	33.73	34.93	CF100-3CS	CF100-3SS	*	*	36.50	1.57	63.5
25	35.32	36.51	CF100-4CS	CF100-4SS	*	*	38.10	1.57	63.5
25	36.91	38.10	CF100-5CS	CF100-5SS	*	*	39.70	1.57	63.5
25	38.50	39.69	CF100-6CS	CF100-6SS	*	*	42.30	1.57	63.5
25	40.08	41.28	CF100-7CS	CF100-7SS	*	*	42.90	1.57	63.5
25	41.67	42.86	CF100-8CS	CF100-8SS	*	*	44.50	1.57	63.5
25	43.26	44.45	CF100-9CS	CF100-9SS	*	*	46.10	1.57	63.5
25	44.85	46.03	CF100-10CS	CF100-10SS	*	*	47.60	1.57	63.5
32	30.56	42.86	CF125-3CS	CF125-3SS	250	300	44.45	1.57	63.5
32	43.26	44.45	CF125-4CS	CF125-4SS	250	300	46.05	1.57	63.5
32	44.85	46.04	CF125-5CS	CF125-5SS	250	300	47.63	1.57	63.5
32	46.43	47.63	CF125-6CS	CF125-6SS	250	300	49.23	1.57	63.5
40	41.68	42.87	CF150-1CS	CF150-1SS	250	300	44.45	1.57	63.5
40	43.26	44.45	CF150-2CS	CF150-2SS	250	300	46.05	1.57	63.5
40	44.85	46.04	CF150-3CS	CF150-3SS	250	300	47.63	1.57	63.5
40	46.44	47.63	CF150-4CS	CF150-4SS	250	300	49.23	1.57	63.5
40	48.03	49.22	CF150-5CS	CF150-5SS	250	300	50.80	1.57	63.5
40	49.61	50.80	CF150-6CS	CF150-6SS	250	300	52.40	1.57	63.5
40	51.20	52.39	CF150-7CS	CF150-7SS	250	300	53.98	1.57	63.5
40	52.79	53.98	CF150-8CS	CF150-8SS	250	300	55.58	1.57	63.5
40	55.96	57.15	CF150-10CS	CF150-10SS	250	300	58.75	1.57	63.5
40	57.55	58.74	CF150-11CS	CF150-11SS	250	300	60.33	1.57	63.5
40	59.14	60.33	CF150-12CS	CF150-12SS	250	300	61.93	1.57	63.5
50	55.96	57.15	CF200-1CS	CF200-1SS	250	250	58.75	1.57	63.5
50	57.55	58.74	CF200-2CS	CF200-2SS	250	250	60.33	1.57	63.5
50	60.72	61.91	CF200-4CS	CF200-4SS	250	250	63.50	1.57	63.5
50	62.31	63.50	CF200-5CS	CF200-5SS	250	250	65.10	1.57	63.5
50	63.90	65.09	CF200-6CS	CF200-6SS	250	250	66.68	1.57	63.5
50	65.48	66.68	CF200-7CS	CF200-7SS	250	250	68.28	1.57	63.5
50	67.07	68.26	CF200-8CS	CF200-8SS	250	250	69.85	1.57	63.5
50	68.66	69.85	CF200-9CS	CF200-9SS	250	250	71.45	1.57	63.5
50	70.25	71.44	CF200-10CS	CF200-10SS	250	250	73.03	1.57	63.5
50	71.83	73.03	CF200-11CS	CF200-11SS	250	250	74.63	1.57	63.5
50	73.42	74.61	CF200-12CS	CF200-12SS	250	250	76.20	1.57	63.5

\* Contact Dixon™ for pressure rating

## Application

Polished butt weld fittings are ideal for use in data centre cooling and fluid transfer systems where reliability and cleanliness are critical. These fittings provide a smooth, crevice-free connection between stainless steel components, reducing the risk of leaks and contamination in chilled water or glycol-based cooling loops. Their polished finish ensures optimal hygiene and performance in environments that demand precision and uninterrupted operation.

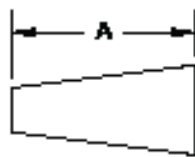
## Material

- Polished 316L stainless steel
- 304 stainless steel

## Approval

- AS1528.3:2019

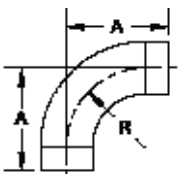
### Butt Weld Concentric Reducer - AS1528.3



AS 1528.3:2019

Size		Part Numbers		A (mm)	Nominal Wall (mm)
mm	inch	SS316	SS304		
19.05 x 12.7	¾ x ½	B31W-R7550PA	B31W-G7550PA	19.05	1.6
25.4 x 12.7	1 x ½	B31W-R10050PA	B31W-G10050PA	25.40	1.6 or 2
25.4 x 19.05	1 x ¾	B31W-R10075PA	B31W-G10075PA	25.40	1.6 or 2
38.1 x 12.7	1½ x ½	B31W-R15050PA	B31W-G15050PA	38.10	1.6 or 2
38.1 x 19.05	1½ x ¾	B31W-R15075PA	B31W-G15075PA	38.10	1.6 or 2
38.1 x 25.4	1½ x 1	B31W-R150100PA	B31W-G150100PA	38.10	1.6 or 2
50.8 x 12.7	2 x ½	B31W-R20050PA	-	50.80	1.6 or 2
50.8 x 19.05	2 x ¾	B31W-R20075PA	-	50.80	1.6 or 2
50.8 x 25.4	2 x 1	B31W-R200100PA	B31W-G200100PA	50.80	1.6 or 2
50.8 x 38.1	2 x 1½	B31W-R200150PA	B31W-G200150PA	50.80	1.6 or 2
63.5 x 25.4	2½ x 1	B31W-R250100PA	B31W-G250100PA	63.50	1.6 or 2
63.5 x 38.1	2½ x 1½	B31W-R250150PA	B31W-G250150PA	63.50	1.6 or 2
63.5 x 50.8	2½ x 2	B31W-R250200PA	B31W-G250200PA	63.50	1.6 or 2
76.2 x 25.4	3 x 1	B31W-R300100PA	B31W-G300100PA	76.20	1.6 or 2
76.2 x 38.1	3 x 1½	B31W-R300150PA	B31W-G300150PA	76.20	1.6 or 2
76.2 x 50.8	3 x 2	B31W-R300200PA	B31W-G300200PA	76.20	1.6 or 2
76.2 x 63.5	3 x 2½	B31W-R300250PA	B31W-G300250PA	76.20	1.6 or 2
101.6 x 38.1	4 x 1½	B31W-R400150PA	B31W-G400150PA	101.6	1.6 or 2
101.6 x 50.4	4 x 2	B31W-R400200PA	B31W-G400200PA	101.6	1.6 or 2
101.6 x 63.5	4 x 2½	B31W-R400250PA	B31W-G400250PA	101.6	1.6 or 2
101.6 x 76.2	4 x 3	B31W-R400300PA	B31W-G400300PA	101.6	1.6 or 2
152.4 x 50.8	6 x 2	B31W-R600200PA	B31W-G600200PA	152.4	1.6 or 2
152.4 x 76.2	6 x 3	B31W-R600300PA	B31W-G600300PA	152.4	1.6 or 2
152.4 x 101.6	6 x 4	B31W-R600400PA	B31W-G600400PA	152.4	1.6 or 2
203.2 x 101.6	8 x 4	B31W-R800400PA	B31W-G800400PA	203.2	1.6, 2 or 2.5
203.2 x 152.4	8 x 6	B31W-R800600PA	B31W-G800600PA	203.2	1.6, 2 or 2.5

### \*90 Butt Weld Elbows with Tangents - AS1528.3



AS 1528.3:2019

Size		Part Numbers		A (mm)	R (mm)	Nominal Wall (mm)
mm	inch	SS316	SS304			
12.70	½	B2S-R50PA	B2S-G50PA	49.05	19.05	1.6
19.05	¾	B2S-R75PA	B2S-G75PA	58.58	28.58	1.6
25.40	1	B2S-R100PA	B2S-G100PA	68.10	38.10	1.6 or 2
38.10	1½	B2S-R150PA	B2S-G150PA	87.15	57.15	1.6 or 2
50.80	2	B2S-R200PA	B2S-G200PA	106.2	76.20	1.6 or 2
63.50	2½	B2S-R250PA	B2S-G250PA	125.25	95.25	1.6 or 2
76.20	3	B2S-R300PA	B2S-G300PA	144.3	114.3	1.6 or 2
101.6	4	B2S-R400PA	B2S-G400PA	182.4	152.4	1.6 or 2
152.4	6	B2S-R600PA	B2S-G600PA	268.6	228.6	1.6 or 2

## SJSS Swivel Series



### Application

The SJSS Swivel Series is designed to simplify hose movement and routing in data centre cooling systems, reducing strain on connections and improving flexibility in tight spaces. These swivel joints help maintain secure, leak-free connections while allowing hoses to move without twisting or kinking—critical for maintaining consistent coolant flow in high-density server environments. Ideal for chilled water or glycol-based cooling loops where reliability and uptime are essential.

### Features

- Longer inner body for easier repair kit insertion
- Larger chamber for a rapid, smooth assembly

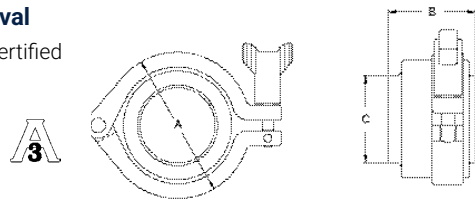
### Material



- Product Contact Components: 316L stainless steel
- Non-Product Contact Components: 304 stainless steel
- Gasket: PTFE and silicone available

### Approval

- 3A certified



Tube OD Size		Part Numbers	Dimensions			PSI at °21C	PSI at °121C	Torque (in lbs)
mm	inch		A	B	C			
25.4	1	SJSS100EBB120	65	50.8	25.4	500	300	300
38.1	1½	SJSS150EBB120	65	50.8	38.1	500	300	300
50.8	2	SJSS200EBB120	78.49	50.8	50.8	450	250	250
63.5	2½	SJSS250EBB120	87.34	50.8	63.5	400	200	200
76.2	3	SJSS300EBB120	100.08	50.8	76.2	350	175	175
101.6	4	SJSS400EBB120	129.03	74.68	101.6	300	150	150

## Sanitary Breakaway Couplings

### Application

Sanitary Breakaway Couplings are ideal for data centre cooling systems where reliability and safety are paramount. These couplings minimise fluid loss and potential damage during accidental hose pull-away incidents, ensuring uninterrupted cooling performance for critical IT infrastructure. Designed to break away under excessive load, they help protect equipment and maintain operational integrity in environments where uptime is essential.

### Features

- Designed to be installed between a fixed point and a hose
- 24kN break load bolts standard, other break loads available

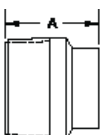
### Material

- Coupling: 316 stainless steel polished to standard <0.8Ra µm, 3A finish
- Clamp Gasket: white EPDM standard, optional material available



Size		Part Numbers
mm	inch	
50.8	2	SBC-200BBE-13
63.5	2½	SBC-250BBE-13
76.2	3	SBC-300BBE-13
101.6	4	SBC-400BBE-13

## BSP Tube Adaptors - Stainless Steel



Size		Part Numbers	A (mm)	Nominal Wall (mm)
mm	inch			
12.7	½	B19WB-R50A	41.4	1.6
19.05	¾	B19WB-R75A	41.4	1.6
25.4	1	B19WB-R100A	44.4	1.6
38.1	1½	B19WB-R150A	44.4	1.6
50.8	2	B19WB-R200A	45.9	1.6
63.5	2½	B19WB-R250A	58.6	1.6
76.2	3	B19WB-R300A	63.5	1.6
101.6	4	B19WB-R400A	65.0	2.1

## King Crimp™ Style - Combination Nipples

### Application

Used in conjunction with Dixon's King Crimp™ ferrules and sleeves, these combination nipples provide secure, permanent hose connections for data centre cooling systems. The crimping process ensures a leak-free seal, reducing the risk of downtime and improving operational safety by eliminating potential catch points found in traditional clamps or fittings. Ideal for chilled water and glycol-based cooling loops where reliable connections are critical to maintaining consistent thermal performance.

### Features

- There are two grooves on the crimp-style king combination nipples. The second groove is the roll stamp groove which has the part number stamped on it
- This groove is a smooth concentric groove so that the stamp can be legible

### Materials

- Plated carbon steel schedule 80
- Plated carbon steel schedule 40
- 316 stainless steel



Hose ID		Part Numbers							
		BSP		NPT	Grooved End		Bevelled End		Shouldered End
mm	inch	Carbon Steel	Stainless Steel	Carbon Steel	Carbon Steel	Stainless Steel	Carbon Steel	Stainless Steel	Carbon Steel
25	1	STC10CSA	RST20CSA	STC10CS	STV10CS	RSTV10CS	STB10CS	RSTB10CS	-
32	1¼	STC15CSA	RST15CSA	STC15CS	-	-	-	-	-
40	1½	STC20CSA	RST20CSA	STC20CS	STV20CS	RSTV20CS	STB20CS	RSTB20CS	-
50	2	STC25CSA	RST25CSA	STC25CS	STV25CS	RSTV25CS	STB25CS	RSTB25CS	-
75	3	STC35CSA	RST35CSA	STC35CS	STV35CS	RSTV35CS	STB35CS	RSTB35CS	STVS35CS
100	4	STC40CSA	RST40CSA	STC40CS	STV40CS	RSTV40CS	STB40CS	RSTB40CS	STVS40CS
150	6	STC60CSA	RST60CSA	STC60CS	STV60CS	RSTV60CS	STB60CS	RSTB60CS	STVS60CS

NPT available on request

Product Group: AM10

## In-line - BSCCQ

### Application

Dixon's in-line filter strainers provide essential protection for data centre cooling systems by removing particulates from water or glycol-based fluids. This helps maintain consistent flow, prevents equipment damage, and ensures optimal performance of pumps, heat exchangers, and valves. Their durable stainless steel construction and easy in-line servicing make them ideal for mission-critical environments where uptime and reliability are non-negotiable.



### Feature

- Bevel seat, I-line, and weld ends available, call Dixon Sanitary at 800.789.1718 for information

### Approval

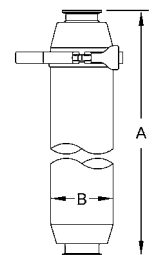
- Must be vertically mounted to be 3A compliant

### Short

Size	Dimensions (in)		316L Stainless Steel 4/1" Perforations Part #	316L Stainless Steel 8/1" Perforations Part #
	A	B		
1"	15.75	4.00	BSCCQ1-R100	BSCCQ1-R10018
1-1/2"	15.75	4.00	BSCCQ1-R150	BSCCQ1-R15018
2"	15.75	4.00	BSCCQ1-R200	BSCCQ1-R20018
2-1/2"	15.75	4.50	BSCCS1-R250	BSCCQ1-R25018
3"	15.75	4.50	BSCCS1-R300	BSCCQ1-R30018



short



### Long

Size	Dimensions (in)		316L Stainless Steel 4/1" Perforations Part #	316L Stainless Steel 8/1" Perforations Part #
	A	B		
1-1/2"	35.375	4.00	BSCCQ2-R150	BSCCQ2-R15018
2"	35.375	4.00	BSCCQ2-R200	BSCCQ2-R20018
3"	35.375	4.50	BSCCS2-R300	BSCCQ2-R30018

## Side-Entry - BSCCQ

### Features

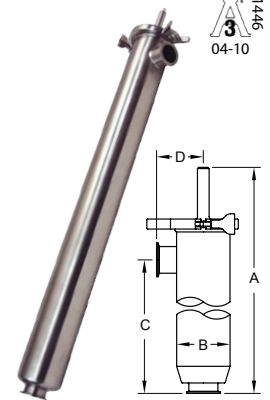
- Can be serviced in-line
- Bevel seat, I-line, and weld ends available; call Dixon Sanitary at 800.789.1718 for information

### Approval

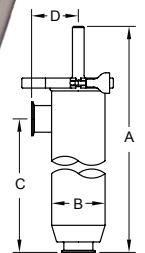
- Must be vertically mounted to be 3A compliant



Size	Dimensions (in)				316L Stainless Steel 4/1" Perforations Part #	316L Stainless Steel 8/1" Perforations Part #
	A	B	C	D		
1-1/2"	41.90	4.00	35.00	3.50	BSCCQ3-R150	BSCCQ3-R15018
2"	41.90	4.00	35.00	3.50	BSCCQ3-R200	BSCCQ3-R20018
3"	41.90	4.50	35.00	3.75	BSCCQ3-R300	BSCCQ3-R30018



long



## Side-Outlet - BSCCQ

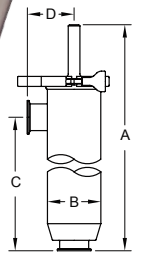
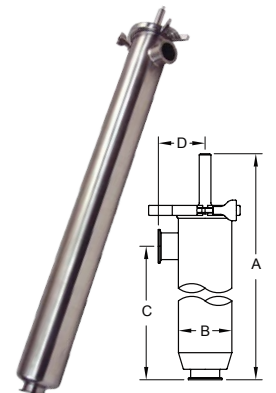
### Features

- Bevel seat, I-line and weld ends available, call Dixon for information
- Can be serviced in-line

### Approval

- Must be vertically mounted to be 3A compliant

Size	Dimensions (in)				316L Stainless Steel 4/1" Perforations Part #	316L Stainless Steel 8/1" Perforations Part #
	A	B	C	D		
1-1/2"	41.90	4.00	35.00	3.50	BSCCQ4-R150	BSCCQ4-R15018
2"	41.90	4.00	35.00	3.50	BSCCQ4-R200	BSCCQ4-R20018
3"	41.90	4.50	35.00	3.75	BSCCQ4-R300	BSCCQ4-R30018



## HT-Series ISO16028 Flushface Part Numbers

### Male Thread

Body Size (inch)	Threads (inch)	Part Numbers					
		Coupler Male Thread	Plug Male Thread	Coupler Male ORB Thread	Plug Male ORB Thread	Coupler Male Bulkhead Thread	Plug Male Bulkhead Thread
3/8	3/8":18 NPT	3HTM3	HT3M3	-	-	-	-
3/8	1/2":14 NPT	3HTM4	HT3M4	-	-	-	-
3/8	9/16":18 ORB	-	-	3HTOM3	HT3OM3	-	-
3/8	3/4":16 ORB	-	-	3HTOM4	HT3OM4	-	-
1/2	1/2":14 NPT	4HTM4	HT4M4	-	-	-	-
1/2	1 3/16":16 ORFS BH	-	-	-	-	4HTRB4	HT4RB4
1/2	7/8":14 JIC BH	-	-	-	-	4HTJB5	HT4JB5
1/2	1":14 ORFS BH	-	-	-	-	4HTRB5	HT4RB5
1/2	1 3/16":12 ORFS BH	-	-	-	-	4HTRB6	HT4RB6
1/2	1 1/16":12 JIC BH	-	-	-	-	4HTJB6	HT4JB6

Product Group: AP08

## HT-Series ISO16028 Flushface Part Numbers

### Female Thread

Body Size (inch)	Threads (inch)	Part Numbers				
		Coupler Female Thread	Plug Female Thread	Coupler Female ORB Thread	90° Coupler Female ORB Thread	90° Plug Female ORB Thread
1/4	1/4":18 NPT	-	-	2HTF2-FS	-	-
3/8	3/8":18 NPT	-	-	3HTF3-FS	-	-
1/2	1/2":14 NPT	-	-	4HTF4-FS	-	-
1/2	9/16":18 ORB	-	-	-	4HT90F3	HT490F3
1/2	3/4":16 ORB	-	-	-	4HT90F4	HT490F4
3/4	3/4":14 NPT	-	-	6HTF6-FS	-	-
1	1":1 1/2" NPT	-	-	8HTF8-FS	-	-
1 1/2	1 1/2":1 1/2" NPT	12HTF12	HT12F12	-	-	-
1 1/2	1 1/2":11 BSPP	12HTBF12	HT12BF12	-	-	-
1 1/2	1 7/8":12 ORB	12HTOF12	HT12OF12	-	-	-
2	2":1 1/2" NPT	16HTF16	HT16F16	-	-	-
2	2":11 BSPP	16HTBF16	HT16BF16	-	-	-
2	2 1/2":12 ORB	16HTOF16	HT16OF16	-	-	-

Product Group: AP08

# Hydraulic Quick Couplings - HT-Series



## HT-Series Correct Connect® ISO16028 Flushface Part Numbers

Body Size (inch)	Thread Size (inch)	Part Numbers		Body Material	Hex (inch)
		Coupler Female Thread	Plug Female Thread		
¼	¼:18 NPT	2HTF2	HT2F2	Steel	⅞
¼	¼:19 BSPP	2HTBF2	HT2BF2	Steel	⅞
¼	9/16 :18 ORB	2HTOF3	HT2OF3	Steel	⅞
⅜	⅜:18 NPT	3HTF3	HT3F3	Steel	1
⅜	⅜:18 NPT	3HTF3-SS	HT3F3-SS	316 Stainless	1
⅜	⅜:19 BSPP	3HTBF3	HT3BF3	Steel	1
⅜	⅜:19 BSPP	3HTBF3-SS	HT3BF3-SS	316 Stainless	1
⅜	9/16 :18 ORB	3HTOF3	HT3OF3	Steel	1
⅜	½:14 NPT	3HTF4	HT3F4	Steel	1⅛
⅜	½:14 NPT	3HTF4-SS	HT3F4-SS	316 Stainless	1⅛
⅜	½:14 BSPP	3HTBF4	HT3BF4	Steel	1⅛
⅜	½:14 BSPP	3HTBF4-SS	HT3BF4-SS	316 Stainless	1⅛
⅜	¾:16 ORB	3HTOF4	HT3OF4	Steel	1⅛
½	½:14 NPT	4HTF4	HT4F4	Steel	1⅜
½	½"- 14 NPT	4HTF4-SS	HT4F4-SS	316 Stainless	1⅜
½	½:14 BSPP	4HTBF4	HT4BF4	Steel	1⅜
½	½:14 BSPP	4HTBF4-SS	HT4BF4-SS	316 Stainless	1⅜
½	¾:16 ORB	4HTOF4	HT4OF4	Steel	1⅜
½	7/8 :14 ORB	4HTOF5	HT4OF5	Steel	15/16
½	¾:14 NPT	4HTF6	HT4F6	Steel	15/16
½	¾:14 NPT	4HTF6-SS	HT4F6-SS	316 Stainless	15/16
½	¾:14 BSPP	4HTBF6	HT4BF6	Steel	15/16
½	¾:14 BSPP	4HTBF6-SS	HT4BF6-SS	316 Stainless	15/16
½	1 1/16 :12 ORB	4HTOF6	HT4OF6	Steel	15/16
⅝	7/8 :14 ORB	5HTOF5	HT5OF5	Steel	1½
⅝	¾:14 NPT	5HTF6	HT5F6	Steel	1½
⅝	¾:14 NPT	5HTF6-SS	HT5F6-SS	316 Stainless	1½
⅝	¾:14 BSPP	5HTBF6	HT5BF6	Steel	1½
⅝	¾:14 BSPP	5HTBF6-SS	HT5BF6-SS	316 Stainless	1½
⅝	1 1/16 :12 ORB	5HTOF6	HT5OF6	Steel	1½
¾	7/8 :14 ORB	6HTOF5	HT6OF5	Steel	1½
¾	¾:14 NPT	6HTF6	HT6F6	Steel	1½
¾	¾:14 NPT	6HTF6-SS	HT6F6-SS	316 Stainless	1½
¾	¾:14 BSPP	6HTBF6	HT6BF6	Steel	1½
¾	¾:14 BSPP	6HTBF6-SS	HT6BF6-SS	316 Stainless	1½
¾	1 1/16 :12 ORB	6HTOF6	HT6OF6	Steel	1½
¾	1:11½ NPT	6HTF8	HT6F8	Steel	1¾
¾	1:11½ NPT	6HTF8-SS	HT6F8-SS	316 Stainless	1¾
¾	1:11 BSPP	6HTBF8	HT6BF8	Steel	1¾
¾	1:11 BSPP	6HTBF8-SS	HT6BF8-SS	316 Stainless	1¾
¾	1 5/16 :12 ORB	6HTOF8	HT6OF8	Steel	1¾
1	1:11½ NPT	8HTF8	HT8F8	Steel	1¾
1	1:11½ NPT	8HTF8-SS	HT8F8-SS	316 Stainless	1¾
1	1:11 BSPP	8HTBF8	HT8BF8	Steel	1¾
1	1:11 BSPP	8HTBF8-SS	HT8BF8-SS	316 Stainless	1¾
1	1 5/16 :12 ORB	8HTOF8	HT8OF8	Steel	1¾
1	1¼:11½ NPT	8HTF10	HT8F10	Steel	2
1	1¼:11½ NPT	8HTF10-SS	HT8F10-SS	316 Stainless	2
1	1¼:11 BSPP	8HTBF10	HT8BF10	Steel	2
1	1¼:11 BSPP	8HTBF10-SS	HT8BF10-SS	316 Stainless	2
1	1⅝:12 ORB	8HTOF10	HT8OF10	Steel	2
1½	1 1/2 :11½ NPT	12HTF12	HT12F12	Steel	2½
1½	1½:11 BSPP	12HTBF12	HT12BF12	Steel	2½
1½	1⅝:12 ORB	12HTOF12	HT12OF12	Steel	2½
2	2":11½ NPT	16HTF16	HT16F16	Steel	3
2	2":11 BSPP	16HTBF16	HT16BF16	Steel	3
2	2½":12 ORB	16HTOF16	HT16OF16	Steel	3

## Dixon Sanitary I-Line/Q-Line Fittings

### A Complete I-Line Connection

#### Sizes

- 1" - 8" O.D. tube I-line (1" - 3" stocked, 4" - 8" special order)
- 1" - 4" O.D. tube Q-Line

#### Materials

- G = 304 stainless steel
- R = 316L stainless steel
- Other alloys are available

#### Feature

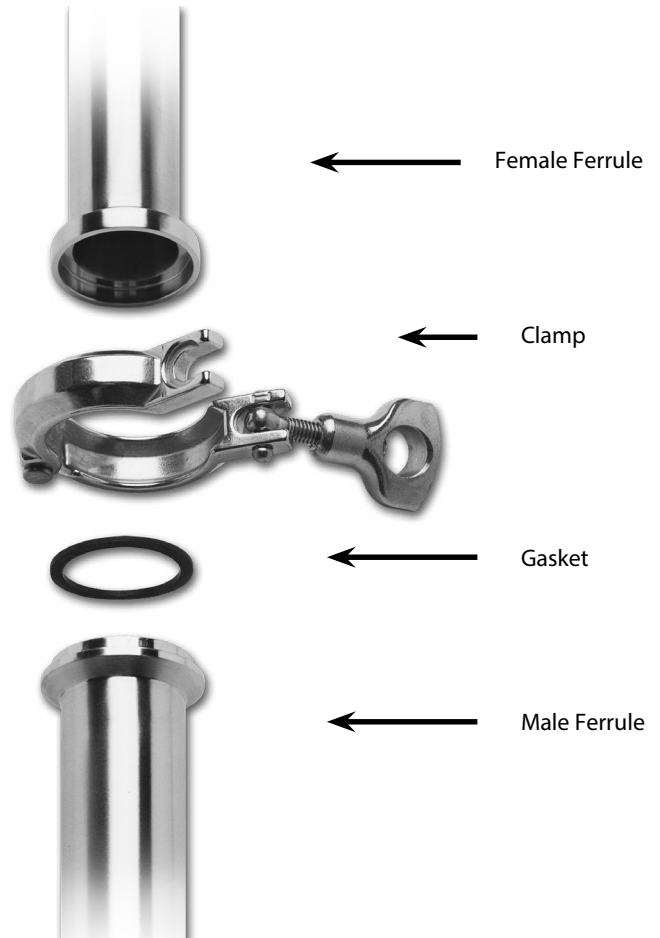
- 3A sanitary finish I.D. and O.D.

#### Primary Markets

- Found in the food processing, beverage, dairy, personal care, and winery markets

#### Dimensions of stainless steel tube

Tube O.D.	Nominal Wall Thickness (in)
1"	.065
1-1/2"	.065
2"	.065
2-1/2"	.065
3"	.065
4"	.083
6"	.109
8"	.109



## High-Performance Stainless Steel Fittings for Data Centre Cooling.





## I-line / Q-line Clamps

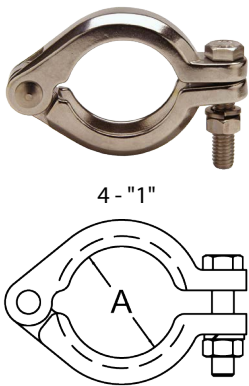
### Heavy Duty Clamps - 13ILH



Tube O.D.	Service Pressure Rating PSI @ °70F (°21C) <sup>1</sup>	Service Pressure Rating PSI @ °250F (°121C) <sup>1</sup>	A (in)	Part #
1"-1-1/2"	700	250	2.12	13ILH100-150
2"	450	250	2.65	13ILH200
2-1/2"	450	200	3.19	13ILH250
3"	350	150	3.72	13ILH300
4"	200	125	4.82	13ILH400
6"	150	100	7.69	13ILH600
8"	125	75	9.69	13ILH800

<sup>1</sup> Wing nut tightened to 25 in-lb of torque

### Bolted Clamps - 13ILB

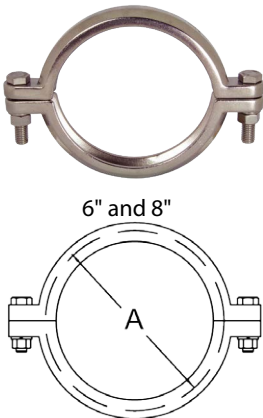


4 - "1"

Tube O.D.	Service Pressure Rating PSI @ °70F (°21C) <sup>1</sup>	Service Pressure Rating PSI @ °250F (°121C) <sup>1</sup>	A (in)	Part #
1"-1-1/2"	1220	1100	2.12	13ILB100-150
2"	900	830	2.65	13ILB200
2-1/2"	720	660	3.19	13ILB250
3"	600	550	3.72	13ILB300
4"	570	525	4.82	13ILB400

<sup>1</sup> Nut tightened to 20 ft-lb of torque

### Bolted I-Line Clamps - 13ILB

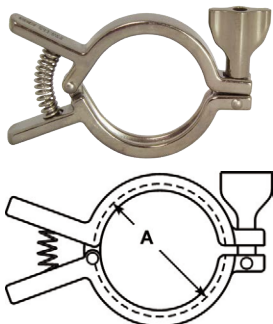


6" and 8"

Tube O.D.	Service Pressure Rating PSI @ °70F (°21C) <sup>1</sup>	Service Pressure Rating PSI @ °250F (°121C) <sup>1</sup>	A (in)	Part #
6"	300	200	7.69	13ILB600
8"	250	150	9.69	13ILB800

<sup>1</sup> Nut tightened to 20 ft-lb of torque

### Squeeze Clamps - 13IL-Q



Tube O.D.	Service Pressure Rating PSI @ °70F (°21C) <sup>1</sup>	Service Pressure Rating PSI @ °250F (°121C) <sup>1</sup>	A (in)	Part #
1"-1-1/2"	700	250	2.12	13IL-Q100150
2"	450	250	2.65	13IL-Q200

<sup>1</sup> Wing nut tightened to 25 in-lb of torque

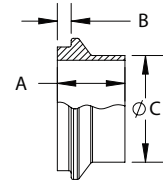


## I-Line/Q-Line - Ferrules

### Male I-Line Short Weld Ferrules - 14WI

A3  
04-63

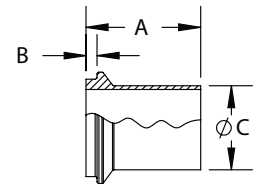
Tube O.D.	A (in)	B (in)	C (in)	Nominal Wall (in)	304 Stainless Steel Part #	316L Stainless Steel Part #
1"	.79	.19	1.00	.065	14WI-G100	14WI-R100
1-1/2"	.95	.20	1.50	.065	14WI-G150	14WI-R150
2"	1.04	.26	2.00	.065	14WI-G200	14WI-R200
2-1/2"	1.16	.31	2.50	.065	14WI-G250	14WI-R250
3"	1.22	.31	3.00	.065	14WI-G300	14WI-R300
4"	1.35	.31	4.00	.083	14WI-G400	14WI-R400
6"	1.13	.19	6.00	.109	---	14WI-R600
8"	1.13	.19	8.00	.109	---	14WI-R800



### Male I-Line Long Weld Ferrules - 14WLI

A3  
04-63

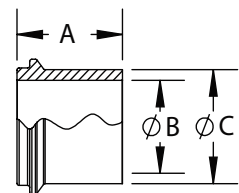
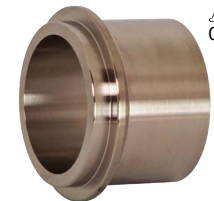
Tube O.D.	A (in)	B (in)	C (in)	Nominal Wall (in)	304 Stainless Steel Part #	316L Stainless Steel Part #
1"	1.75	0.19	1.00	.065	14WLI-G100	14WLI-R100
1-1/2"	2.04	0.20	1.50	.065	14WLI-G150	14WLI-R150
2"	2.32	0.26	2.00	.065	14WLI-G200	14WLI-R200
2-1/2"	2.50	0.31	2.50	.065	14WLI-G250	14WLI-R250
3"	2.68	0.31	3.00	.065	14WLI-G300	14WLI-R300
4"	3.00	0.31	4.00	.083	14WLI-G400	14WLI-R400
6"	2.88	0.19	6.00	.109	14WLI-G600	14WLI-R600



### Male I-Line Heavy Wall Tank Weld Ferrules - 14WHI

A3  
04-63

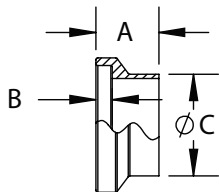
Tube O.D.	A (in)	B (in)	C (in)	Nominal Wall (in)	304 Stainless Steel Part #	316L Stainless Steel Part #
1"	1.50	.87	1.25	.065	14WHI-G100	14WHI-R100
1-1/2"	1.63	1.37	1.69	.065	14WHI-G150	14WHI-R150
2"	1.75	1.87	2.25	.065	14WHI-G200	14WHI-R200
2-1/2"	1.75	2.37	2.75	.065	14WHI-G250	14WHI-R250
3"	1.81	2.87	3.31	.065	14WHI-G300	14WHI-R300
4"	2.13	3.83	4.25	.083	14WHI-G400	14WHI-R400
6"	3.00	5.78	6.88	.109	---	14WHI-R600





## I-Line/Q-Line - Ferrules

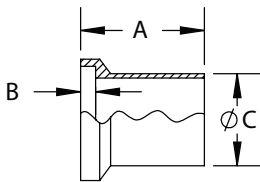
A 621  
3  
04-63



Female I-Line Short Weld Ferrules - 15WI

Tube O.D.	A (in)	B (in)	C (in)	Nominal Wall (in)	304 Stainless Steel Part #	316L Stainless Steel Part #
1"	.79	.25	1.00	.065	15WI-G100	15WI-R100
1-1/2"	.95	.25	1.50	.065	15WI-G150	15WI-R150
2"	1.04	.31	2.00	.065	15WI-G200	15WI-R200
2-1/2"	1.16	.36	2.50	.065	15WI-G250	15WI-R250
3"	1.22	.36	3.00	.065	15WI-G300	15WI-R300
4"	1.35	.36	4.00	.083	15WI-G400	15WI-R400
6"	1.13	.24	6.00	.109	---	15WI-R600
8"	1.13	.24	8.00	.109	---	15WI-R800

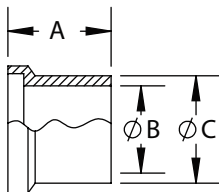
A 621  
3  
04-63



Female I-Line Long Weld Ferrules - 15WLI

Tube O.D.	A (in)	B (in)	C (in)	Nominal Wall (in)	304 Stainless Steel Part #	316L Stainless Steel Part #
1"	1.75	.25	1.00	.065	15WLI-G100	15WLI-R100
1-1/2"	2.03	.25	1.50	.065	15WLI-G150	15WLI-R150
2"	2.31	.31	2.00	.065	15WLI-G200	15WLI-R200
2-1/2"	2.50	.36	2.50	.065	15WLI-G250	15WLI-R250
3"	2.69	.36	3.00	.065	15WLI-G300	15WLI-R300
4"	3.00	.36	4.00	.083	15WLI-G400	15WLI-R400
6"	3.00	.24	6.00	.109	---	15WLI-R600

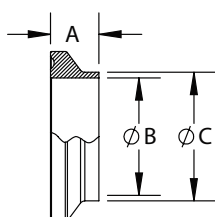
A 621  
3  
04-63



Female I-Line Heavy Wall Tank Weld Ferrules - 15WHI

Size	A (in)	B (in)	C (in)	304 Stainless Steel Part #	316L Stainless Steel Part #
1"	1.50	.87	1.25	15WHI-G100	15WHI-R100
1-1/2"	1.63	1.37	1.69	15WHI-G150	15WHI-R150
2"	1.75	1.87	2.25	15WHI-G200	15WHI-R200
2-1/2"	1.75	2.37	2.75	15WHI-G250	15WHI-R250
3"	1.81	2.87	3.31	15WHI-G300	15WHI-R300
4"	2.13	3.83	4.25	15WHI-G400	15WHI-R400

A 621  
3  
04-63



Q-Line Weld Ferrules - 14WQ

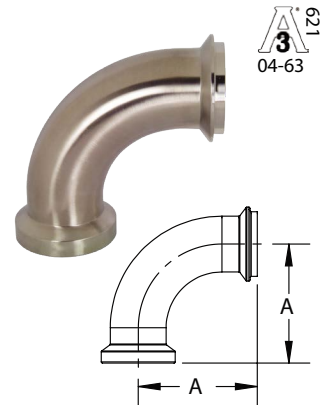
Tube O.D.	A (in)	B (in)	C (in)	Nominal Wall (in)	304 Stainless Steel Part #
1"	.53	.87	1.00	.065	14WQ-G100
1-1/2"	.56	1.37	1.50	.065	14WQ-G150
2"	.81	1.87	2.00	.065	14WQ-G200
2-1/2"	.94	2.37	2.50	.065	14WQ-G250
3"	.94	2.87	3.00	.065	14WQ-G300
4"	1.00	3.83	4.00	.083	14WQ-G400



## I-Line/Q-Line - Elbows

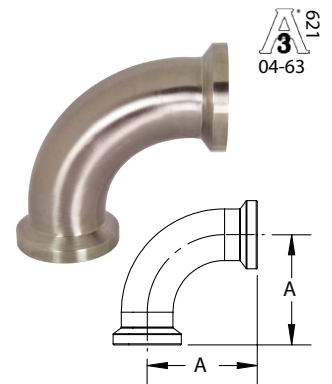
### °90 Female I-Line x Male I-Line Elbows - B2FI

Tube O.D.	A (in)	304 Stainless Steel Part #
1"	2.29	B2FI-G100
1-1/2"	3.20	B2FI-G150
2"	4.04	B2FI-G200
2-1/2"	4.91	B2FI-G250
3"	5.72	B2FI-G300
4"	7.35	B2FI-G400



### °90 Female I-Line Elbows - B2CI

Tube O.D.	A (in)	304 Stainless Steel Part #
1"	2.29	B2CI-G100
1-1/2"	3.20	B2CI-G150
2"	4.04	B2CI-G200
2-1/2"	4.91	B2CI-G250
3"	5.72	B2CI-G300
4"	7.35	B2CI-G400



### °90 Male I-Line Elbows - B2EI

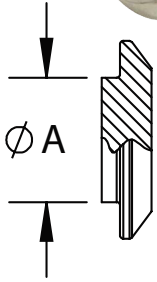
Tube O.D.	A (in)	304 Stainless Steel Part #
1"	2.29	B2EI-G100
1-1/2"	3.20	B2EI-G150
2"	4.04	B2EI-G200
2-1/2"	4.91	B2EI-G250
3"	5.72	B2EI-G300
4"	7.35	B2EI-G400





## I-Line / Q-Line - End Caps

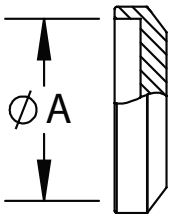
621  
3  
04-63



### Male I-Line Solid End Caps - 16AI14-I

Size	A (in)	304 Stainless Steel Part #	316L Stainless Steel Part #
1"	1.25	16AI14-I100	16AI14-I100R
1-1/2"	1.74	16AI14-I150	16AI14-I150R
2"	2.24	16AI14-I200	16AI14-I200R
2-1/2"	2.74	16AI14-I250	16AI14-I250R
3"	3.30	16AI14-I300	16AI14-I300R
4"	4.30	16AI14-I400	16AI14-I400R
6"	6.83	16AI14-I600	16AI14-I600R
8"	8.83	---	16AI14-I800R

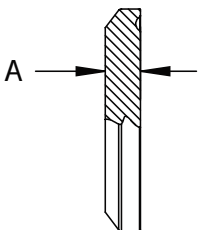
621  
3  
04-63



### Female I-Line Solid End Caps - 16AI15-I

Size	A (in)	304 Stainless Steel Part #	316L Stainless Steel Part #
1"	1.27	16AI15-I100	16AI15-I100R
1-1/2"	1.76	16AI15-I150	16AI15-I150R
2"	2.26	16AI15-I200	16AI15-I200R
2-1/2"	2.76	16AI15-I250	16AI15-I250R
3"	3.32	16AI15-I300	16AI15-I300R
4"	4.32	16AI15-I400	16AI15-I400R
6"	6.92	16AI15-I600	16AI15-I600R
8"	8.92	---	16AI15-I800R

621  
3  
04-63



### Q-Line Solid End Caps - 16AQ

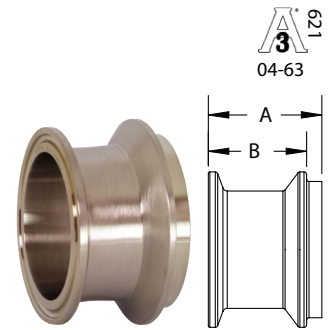
Size	A (in)	304 Stainless Steel Part #
1"	0.19	16AQ-G100
1-1/2"	0.19	16AQ-G150
2"	0.25	16AQ-G200
2-1/2"	0.26	16AQ-G250
3"	0.26	16AQ-G300
4"	0.25	16AQ-G400



## I-Line/Q-Line Adapters

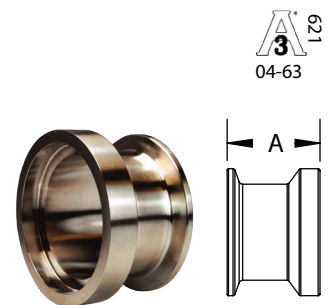
### Male I-Line x Clamp Adapters - 14-17114-MP

Tube O.D.	A (in)	B (in)	304 Stainless Steel Part #
1"	1.29	1.10	14-17114-MPG100
1-1/2"	1.45	1.26	14-17114-MPG150
2"	1.54	1.29	14-17114-MPG200
2-1/2"	1.66	1.35	14-17114-MPG250
3"	1.72	1.41	14-17114-MPG300
4"	1.98	1.67	14-17114-MPG400



### Female I-Line x Clamp Adapters - 15-17114-MP

Tube O.D.	A (in)	304 Stainless Steel Part #
1"	1.28	15-17114-MPG100
1-1/2"	1.45	15-17114-MPG150
2"	1.54	15-17114-MPG200
2-1/2"	1.63	15-17114-MPG250
3"	1.72	15-17114-MPG300
4"	1.97	15-17114-MPG400



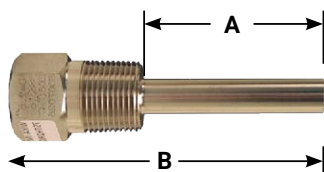
## Threaded Thermowell

### Application

Threaded Thermowells are essential for data centre cooling systems, providing accurate and reliable temperature monitoring within chilled water or glycol-based loops. Their stainless steel, hermetically sealed design ensures durability under demanding conditions, helping operators maintain optimal thermal management and prevent overheating or thermal stress on critical IT equipment. With precise readings and minimal oscillation, these thermowells support consistent cooling performance in mission-critical environments.

### Feature

- 4/3" male NPT process connection



'A' dimension	'B' dimension	316 Stainless Steel Part #
8/5-1"	2/1-2"	75TH2R015SS
2/1-2"	4"	75TH2R025SS
2/1-4"	6"	75TH2R045SS
2/1-7"	9"	75TH2R075SS

## Features

- Case: sturdy, corrosion-resistant series 304 stainless steel
- Bezel crystal: optically clear, strong glass, gasketed to maintain weather-tight integrity is standard
- Stem: 304 series stainless steel, welded at tip and case connector to prevent leakage, 1/4" (6.35 mm) diameter
- ASME B40.200 compliant
- Slotted-hex adjustment head offers screwdriver or wrench use to field calibrate the thermometer
- Bi-metal element: an extremely responsive temperature sensing helix which has been carefully sized and tested, heat treated and aged to relieve inherent stresses and insure continued accuracy
- Dampening: bi-metal helix is coated with a viscous silicone to minimize pointer oscillation and to improve temperature transmission
- Immersion: for accurate temperature readings, immerse stem a minimum of 2" (50 mm) in agitated liquids or 4" (100 mm) in moving air or gas
- Over range: temporary over or under range of 50% of scale up to **260°C or 500°F** will not affect the instrument accuracy
- Accuracy: guaranteed to be accurate to within 1% of full scale
- Standard connection is 1/2" male NPT

## Specification

- Maximum operating pressure: **125 PSI**

### Model 30 Back Connected

Stem Length	Temperature Range	3" Face Part #
2-1/2"	0-250°F/-20-120°C	30025064
	50-500°F/10-260°C	30025104
4"	0-250°F/-20-120°C	30040064
	50-500°F/10-260°C	30040104
6"	0-250°F/-20-120°C	30060064
	50-500°F/10-260°C	30060104
9"	0-250°F/-20-120°C	30090064
	50-500°F/10-260°C	30090104



### Model 31 Bottom Connected 90 Angle

Stem Length	Temperature Range	3" Face Part #
2-1/2"	0-250°F/-20-120°C	31025064
4"	50-500°F/10-260°C	31040104



### Model 50 Back Connected

Stem Length	Temperature Range	5" Face Part #
2-1/2"	50-500°F/10-260°C	50025104
4"	0-250°F/-20-120°C	50040064



### Model 52 Adjustable Angle

Stem Length	Temperature Range	5" Face Part #
2-1/2"	0-250°F/-20-120°C	52025064
4"	0-250°F/-20-120°C	52040064
4"	50-500°F/10-260°C	52040104



## Clever Clamp™

### Application

The Dixon™ Clever Clamp™ is an ideal solution for data centre cooling systems, offering fast and secure gasket compression for both rubber and PTFE connections. Its easy-to-use lever closure ensures consistent sealing without the need for tools or torquing, reducing installation time and minimising the risk of leaks. Perfect for mission-critical environments where reliability and uptime are essential, the Clever Clamp™ can be installed anywhere a traditional tri-clamp is used.

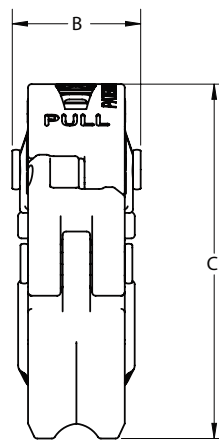
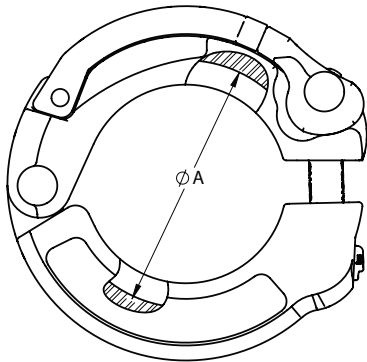
### Features

- Consistent compression of the gasket with every use:
  - No concern for damage to the gasket from overcompression or creating internal bacterial traps form over or under compression. ASME BPE capable
- Adjustable for both rubber and PTFE gasket styles
- Fast installation, no torquing tools required

- Threadless design eliminates the risk of damaged threads leading to improper tightening of wingnut
- Lockout-ready design, and aligned holes in the clamp body make cable locking fast and easy
- Self-locking lever and colour-coding options available

### Material

- 304 stainless steel



Scan here for the Clever Clamp™ video

Size		Part Numbers		A (inch)	B (inch)	C (inch)
mm	inch	Standard	Self-Locking Lever			
38.1	1½	13SCC-100150	13SCC-100150L	2.14	1.10	3.04
50.8	2	13SCC-200	13SCC-200L	2.65	1.10	3.53
76.2	3	13SCC-300	13SCC-300L	3.72	1.10	4.59
101.6	4	13SCC-400	13SCC-400L	4.82	1.10	5.62

Product Group: AV03



## Clever Clamp™ Add-On Features

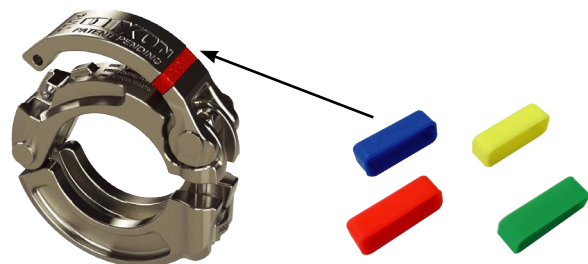
### Applications

Interchangeable coloured food-grade silicone ID bands for customisable process line identification.

### Food Grade ID Bands

Colour	Part Numbers
Red	13SCC-CB-R
Green	13SCC-CB-G
Blue	13SCC-CB-B
Yellow	13SCC-CB-Y

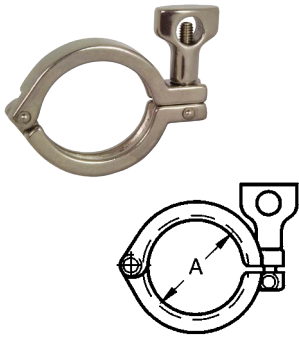
Product Group: AV03



## Application

Stainless steel sanitary clamps are ideal for data centre cooling systems where reliability and cleanliness are critical. Their hygienic design and ease of assembly/disassembly make them perfect for securely joining piping or tubing in chilled water and glycol-based loops. Constructed from corrosion-resistant stainless steel (304 or 316), these clamps provide a smooth, crevice-free connection that prevents leaks and contamination, ensuring consistent cooling performance in mission-critical environments. Simple to clean and maintain, they support operational uptime where precision and safety are paramount.

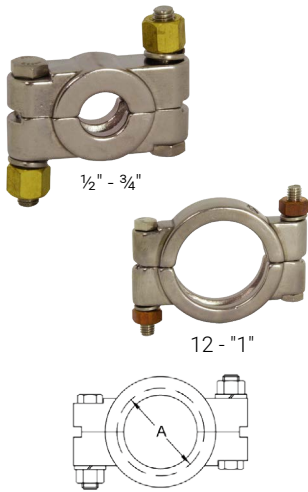
### Single Pin Heavy Duty Clamps



Size		Part Numbers	Service Pressure Rating @ 21 (PSI)	Dimension A (mm)
mm	inch			
12.7 - 19.05	½ - ¾	13MHHM50-75	1500	26.98
25.4 - 38.1	1 - 1½	13MHHM100150	500	53.90
50.8	2	13MHHM200	450	67.42
63.5	2½	13MHHM250	400	80.89
76.2	3	13MHHM300	350	94.45
101.6	4	13MHHM400	300	122.43
152.4	6	13MHHM600	150	168.28
203.2	8	13MHHM800	100	220.84

Product Group: AV03

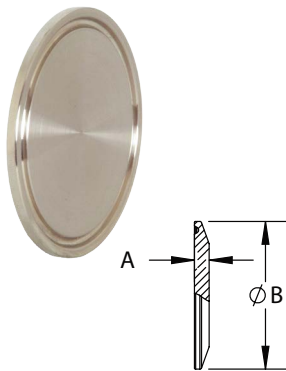
### Bolted Clamps



Size		Part Numbers	Service Pressure Rating @ 21C (PSI)	Service Pressure Rating @ 121 (PSI)	Dimension A (mm)
mm	inch				
12.7 - 19.05	½ - ¾	13MHP75	1500	1200	26.98
25.4 - 38.1	1 - 1½	13MHP100-150	1500	1200	53.90
50.8	2	13MHP200	1000	800	67.42
63.5	2½	13MHP250	1000	800	80.89
76.2	3	13MHP300	1000	800	94.45
101.6	4	13MHP400	800	600	122.43
152.4	6	13MHP600	300	200	168.28
203.2	8	13MHP800	250	150	220.84
254	10	13MHP1000	200	125	272.80
304.8	12	13MHP1200	150	100	323.80

Product Group: AV03

### Stainless Steel Sanitary Clamp Solid End Caps



Size		Part Numbers		A (mm)	B (mm)
mm	inch	SS316	SS304		
12.7 - 19.05	½ - ¾	16AMP-R50-75	16AMP-G50-75	6.35	25.15
25.4 - 38.1	1 - 1½	16AMP-R100-150	16AMP-G100-150	6.35	50.29
50.8	2	16AMP-R200	16AMP-G200	6.35	64.00
63.5	2½	16AMP-R250	16AMP-G250	6.35	77.47
76.2	3	16AMP-R300	16AMP-G300	6.35	90.93
101.6	4	16AMP-R400	16AMP-G400	7.87	118.87
152.4	6	16AMP-R600	16AMP-G600	11.17	166.62
203.2	8	16AMP-R800	16AMP-G800	11.17	218.44
254	10	16AMP-R1000	16AMP-G1000	11.17	268.48
304.8	12	16AMP-R1200	16AMP-G1200	11.17	319.28

Product Group: AV03

## **Dixon is a participating member of the Open Compute Project (OCP)**

Dixon is an active participant in the Open Compute Project (OCP), a global initiative bringing together leaders in data centre design and infrastructure. Through our involvement, we collaborate with industry innovators to advance open-source hardware and software that improve scalability, efficiency, and sustainability across the data centre ecosystem.

As a trusted provider of fluid transfer and connection solutions, Dixon contributes practical expertise that supports the reliable performance and safety of critical systems within modern data centres. Our participation in OCP allows us to share knowledge, align with best practices, and help shape technologies that address the evolving needs of high-performance computing environments.

By engaging with this global community, Dixon demonstrates its commitment to driving innovation, fostering sustainability, and ensuring the resilience of infrastructure that underpins today's digital economy.



**OPEN**  
COMMUNITY®

