



Camlock

Product Range

Brochure

1300 134 651 | dixonvalve.com.au

Camlocks (Cam & Groove)	3	Camlocks - EZ Boss-Lock	19
Specifications - Design Information	3	EZ Boss-Lock™ Couplings	19
Camlock Configurations	4	EZ Boss-Lock™ Swaged Type	19
Camlocks - Premium Camlocks	5	EZ Boss-Lock™ Notched Type	20
Dixon™ Premium Type A	5	EZ Boss-Lock™ Notched Stem & Ferrule	20
Dixon™ Premium Type B	5	Abrasion Resistant Inserts	20
Dixon™ Premium Type C	6	Camlocks - Accessories	21
Dixon™ Premium Type D	6	Camlock Gasket Dimensions	21
Dixon™ Premium Type E	7	Camlock Gasket Colour Codes	21
Dixon™ Premium Type F	7	Camlock Gaskets	22
Dixon™ Premium Type DC	8	Camlock PTFE Gaskets	22
Dixon™ Premium Type DP	8	Camlock Fuel Gaskets	22
Camlocks - NPT Camlocks	9	Dixon™ Camlock Handle Assemblies	23
Dixon™ Premium Type A	9	Locking Handles for Dixon™ Dust Caps	23
Dixon™ Premium Type B	9	EZ Boss-Lock™ Handles	23
Dixon™ Premium Type D	10	PVC Coated Lanyard	23
Dixon™ Premium Type F	10	Witches Hat Strainers	24
Camlocks - Reducing Adaptors & Couplers	11	Disk Strainers	24
Dixon™ Premium Reducing Type A	11	Lanyards with Clip for Boss-Lock™ Couplings	24
Dixon™ Premium Reducing Type B	11	Pull Ring Safety Clips for Boss-Lock™ Couplings	24
Dixon™ Premium Reducing Type C	11	Stainless Steel Pull Ring	24
Dixon™ Premium Reducing Type D	11	Clip for Boss-Lock™ Couplings	25
Dixon™ Premium Reducing Type E	12	Carbon Steel Clip Assembly for Boss-Lock™ Coupling	25
Dixon™ Premium Reducing Type F	12	Jack Chain with S-Hooks	25
Dixon™ Premium Reducing Type DA	12	Sash Chain with Pull Rings	25
Dixon™ Premium Spool Adaptor	13	Locking Cam Arm Velcro™ Straps	25
Dixon™ Premium Spool Coupler	13		
Dixon™ Premium Lockable Dust Caps	13		
Dixon™ Premium Flange Adaptor	14		
Dixon™ Premium Flange Coupler	14		
Dixon™ Premium Bend 68°	14		
Camlocks - Standard Camlocks	15		
Dixon™ Standard Camlocks	15		
Dixon™ Standard Camlocks	16		
Dixon™ Standard Crimp Hose Tails	16		
Camlocks - Vent-Lock	17		
Vent-Lock™ Safety Couplings	17		
Vent-Lock™ Safety EZ Boss-Lock™ Couplings	17		
Camlocks - King Crimp	18		
Dixon™ King Crimp™ Camlock Couplings	18		
Dixon™ King Crimp™ Type C	18		
Dixon™ King Crimp™ Type E	18		

Specifications - Design Information

Application

The Dixon™ camlock coupling is a reliable quick-connect coupling for use with hose, pipe, tubing, and tanks conveying a wide variety of liquids, dry bulk materials, and vapours including cooling water, fuels, chemicals, cosmetics, food products, adhesives, dyes, pharmaceuticals, pellets and much more.

How does it work?

To make the connection, slide the male adaptor into the female coupler and with normal hand pressure, press the cam levers down. Uncoupling is as quick and simple as coupling. Lift the cam arms and remove the adaptor.

Approvals

The Dixon™ range of camlock couplers and adaptors are manufactured to interchange with all products produced to commercial item description A-A 59326D, which supersedes Mil-C-27487. No standard exists for the 15mm (½") & 200mm (8") fittings and generally, these sizes do not interchange with other manufacturers.

Pressure Ratings

Designed for use with liquids. Consult Dixon™ for specific recommendations. Recommendations are based on the use of mating Dixon™ fittings at an ambient temperature of 21°C with a standard seal as noted in the table below. For use at elevated temperatures or other unusual operating conditions, consult your Dixon™ representative.

Aluminium, Bronze, Brass, Stainless Steel & Malleable Camlocks

Size (mm)	15	20-50	65	75	100	125-150	200
Pressure (PSI)	150	250	150	125	100	75	50

Polypropylene & Nyglass Camlocks

Size (mm)	15-20	32-50	75	100
Pressure (PSI)	125	100	60	50

Materials

The Dixon™ range of camlock couplers and adaptors are manufactured from the following materials:

- Aluminium conforming to the requirements of ASTM-A383
- Stainless steel grade CF8M (316 Equivalent) in accordance with the requirements of ASTM-A351
- Bronze grade UNS C84400 in accordance with the requirements of ASTM-B584
- Brass grade UNS C38500 in accordance with the requirements of ASTM-B455
- Polypropylene 30% glass filled
- Nyglass 30% glass filled
- Hastelloy

Body	Levers	Pins	Pull Rings	Seal
Die Cast Aluminium	Brass	Zinc Plated Steel	Zinc Plated Steel	Nitrile Buna Rubber
Brass	210 Stainless Steel	Zinc Plated Steel	Zinc Plated Steel	Nitrile Buna Rubber
Bronze	210 Stainless Steel	Zinc Plated Steel	Zinc Plated Steel	Nitrile Buna Rubber
Polypropylene	210 Stainless Steel	Zinc Plated Steel	Zinc Plated Steel	EPDM
Nyglass	210 Stainless Steel	Zinc Plated Steel	Zinc Plated Steel	EPDM
Stainless Steel	210 Stainless Steel	303 Stainless Steel	316 Stainless Steel	Nitrile Buna Rubber
Hastelloy	316 Stainless Steel	302 Stainless Steel	316 Stainless Steel	FKM

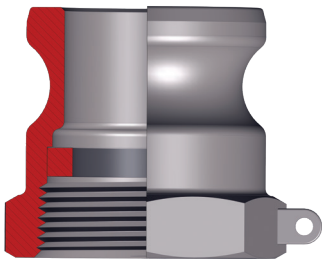
Welding of Camlocks

Couplings made using the die-cast process must not be welded. Although bronze sand cast couplings made from the above materials may be welded using the appropriate welding equipment and compatible filler material, any modifications to the product will void your warranty. Welding the couplings changes the integrity of the coupling therefore Dixon™ will not accept any responsibility for modified couplings.

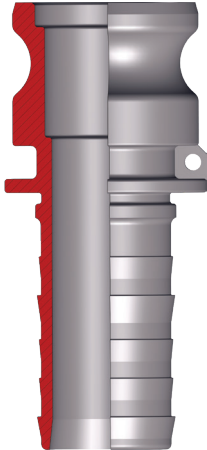


- Under no circumstances should camlock couplings be used in compressed air or steam applications
- Polypropylene and nyglass should not be mixed with aluminium fittings
- Dust caps and dust plugs are not to be used in any pressure applications for safety and environmental reasons

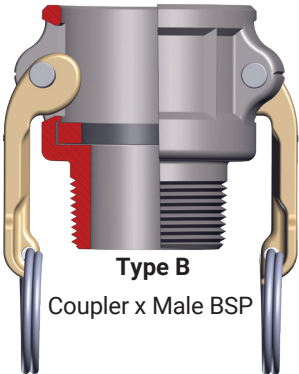
Camlock Configurations



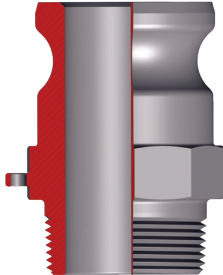
Type A
Adaptor x Female BSP



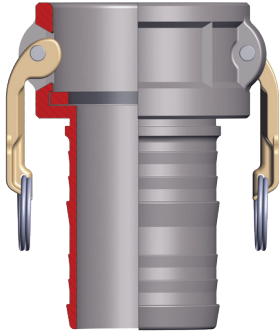
Type E
Adaptor x Hose Tail



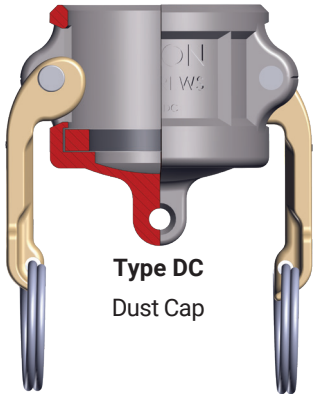
Type B
Coupler x Male BSP



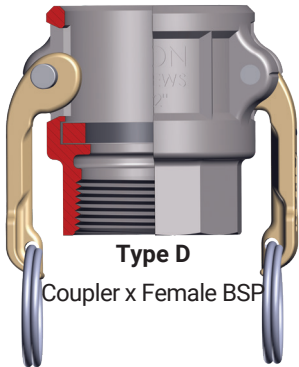
Type F
Adaptor x Male BSP



Type C
Coupler x Hose Tail



Type DC
Dust Cap



Type D
Coupler x Female BSP



Type DP
Dust Plug

Dixon™ Premium Type A
Adaptor x Female BSP



Size (mm)	Working Pressure (PSI)	Part Numbers					
		Aluminium	Bronze	Stainless Steel	Brass	Polypropylene	Nyglass
15	150	ALDC050A	BR050A	SS050A	-	PPA050A ¹	NGA050A
20	250	ALDC075A	BR075A	SS075A	BRSS075A	PPA075A	NGA075A
25	250	ALDC100A	BR100A	SS100A	BRSS100A	PPA100A	NGA100A
32	250	ALDC125A	BR125A	SS125A	BRSS125A	PPA125A	NGA125A
40	250	ALDC150A	BR150A	SS150A	BRSS150A	PPA150A	NGA150A
50	250	ALDC200A	BR200A	SS200A	BRSS200A	PPA200A	NGA200A
65	150	ALDC250A	BR250A	SS250A	BRSS250A	-	-
75	125	ALDC300A	BR300A	SS300A	BRSS300A	PPA300A	NGA300A
100	100	ALDC400A	BR400A	SS400A	BRSS400A	PPA400A	NGA400A
125	75	ALDC500A	BR500A	SS500A	-	-	-
150	75	ALDC600A	BR600A	SS600A	-	-	-

PG: AL12 PG: AL06 PG: AL05 PG: AL14 PG: AL08 PG: AL09

¹Adaptor size is 20mm
Hastelloy available in selected sizes

Dixon™ Premium Type B
Coupler x Male BSP



Size (mm)	Working Pressure (PSI)	Part Numbers					
		Aluminium	Bronze	Stainless Steel	Brass	Polypropylene	Nyglass
15	150	ALDC050B	BR050B	SS050B	-	PPB050A ¹	NGB050A
20	250	ALDC075B	BR075B	SS075B	BRSS075B	PPB075A	NGB075A
25	250	ALDC100B	BR100B	SS100B	BRSS100B	PPB100A	NGB100A
32	250	ALDC125B	BR125B	SS125B	BRSS125B	PPB125A	NGB125A
40	250	ALDC150B	BR150B	SS150B	BRSS150B	PPB150A	NGB150A
50	250	ALDC200B	BR200B	SS200B	BRSS200B	PPB200A	NGB200A
65	150	ALDC250B	BR250B	SS250B	BRSS250B	-	-
75	125	ALDC300B	BR300B	SS300B	BRSS300B	PPB300A	NGB300A
100	100	ALDC400B	BR400B	SS400B	BRSS400B	PPB400A	NGB400A
125	75	ALDC500B	BR500B	SS500B	-	-	-
150	75	ALDC600B	BR600B	SS600B	-	-	-

PG: AL12 PG: AL06 PG: AL05 PG: AL14 PG: AL08 PG: AL09

¹Coupler size is 20mm
Hastelloy available in selected sizes



- Under no circumstances should camlock couplings be used in compressed air or steam applications
- Polypropylene and nyglass should not be mixed with aluminium fittings

Dixon™ Premium Type C
Coupler x Hose Tail



Size (mm)	Working Pressure (PSI)	Part Numbers					
		Aluminium	Bronze	Stainless Steel	Brass	Polypropylene	Nyglass
15	150	ALDC050C	BR050C	SS050C	-	PPC050A ¹	NGC050A
20	250	ALDC075C	BR075C	SS075C	BRSS075C	PPC075A	NGC075A
25	250	ALDC100C	BR100C	SS100C	BRSS100C	PPC100A	NGC100A
32	250	ALDC125C	BR125C	SS125C	BRSS125C	PPC125A	NGC125A
40	250	ALDC150C	BR150C	SS150C	BRSS150C	PPC150A	NGC150A
50	250	ALDC200C	BR200C	SS200C	BRSS200C	PPC200A	NGC200A
65	150	ALDC250C	BR250C	SS250C	BRSS250C	-	-
75	125	ALDC300C	BR300C	SS300C	BRSS300C	PPC300A	NGC300A
100	100	ALDC400C	BR400C	SS400C	BRSS400C	PPC400A	NGC400A
125	75	ALDC500C	BR500C	SS500C	-	-	-
150	75	ALDC600C	BR600C	SS600C	-	-	-
		PG: AL06	PG: AL12	PG: AL05	PG: AL14	PG: AL08	PG: AL09

¹Coupler size is 20mm
Hastelloy available in selected sizes

Dixon™ Premium Type D
Coupler x Female BSP



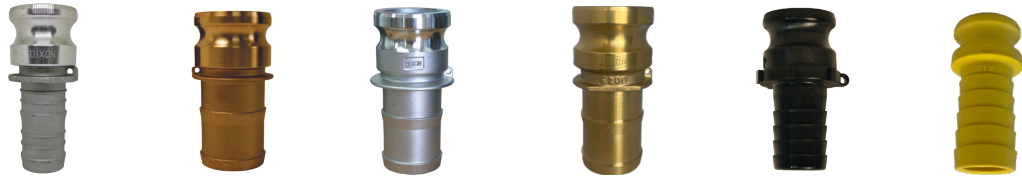
Size (mm)	Working Pressure (PSI)	Part Numbers					
		Aluminium	Bronze	Stainless Steel	Brass	Polypropylene	Nyglass
15	150	ALDC050D	BR050D	SS050D	-	PPD050A ¹	NGD050A
20	250	ALDC075D	BR075D	SS075D	BRSS075D	PPD075A	NGD075A
25	250	ALDC100D	BR100D	SS100D	BRSS100D	PPD100A	NGD100A
32	250	ALDC125D	BR125D	SS125D	BRSS125D	PPD125A	NGD125A
40	250	ALDC150D	BR150D	SS150D	BRSS150D	PPD150A	NGD150A
50	250	ALDC200D	BR200D	SS200D	BRSS200D	PPD200A	NGD200A
65	150	ALDC250D	BR250D	SS250D	BRSS250D	-	-
75	125	ALDC300D	BR300D	SS300D	BRSS300D	PPD300A	NGD300A
100	100	ALDC400D	BR400D	SS400D	BRSS400D	PPD400A	NGD400A
125	75	ALDC500D	BR500D	SS500D	-	-	-
150	75	ALDC600D	BR600D	SS600D	-	-	-
		PG: AL12	PG: AL06	PG: AL05	PG: AL14	PG: AL08	PG: AL09

¹Coupler size is 20mm
Hastelloy available in selected sizes



- Under no circumstances should camlock couplings be used in compressed air or steam applications
- Polypropylene and nyglass should not be mixed with aluminium fittings

**Dixon™ Premium Type E
Adaptor x Hose Tail**



Size (mm)	Working Pressure (PSI)	Part Numbers					
		Aluminium	Bronze	Stainless Steel	Brass	Polypropylene	Nyglass
15	150	ALDC050E	BR050E	SS050E	-	PPE050A ¹	NGE050A ¹
20	250	ALDC075E	BR075E	SS075E	BRSS075E	PPE075A	NGE075A
25	250	ALDC100E	BR100E	SS100E	BRSS100E	PPE100A	NGE100A
32	250	ALDC125E	BR125E	SS125E	BRSS125E	PPE125A	NGE125A
40	250	ALDC150E	BR150E	SS150E	BRSS150E	PPE150A	NGE150A
50	250	ALDC200E	BR200E	SS200E	BRSS200E	PPE200A	NGE200A
65	150	ALDEC50E	BR250E	SS250E	BRSS250E	-	-
75	125	ALDC300E	BR300E	SS300E	BRSS300E	PPE300A	NGE300A
100	100	ALDC400E	BR400E	SS400E	BRSS400E	PPE400A	NGE400A
125	75	ALDC500E	BR500E	SS500E	-	-	-
150	75	ALDC600E	BR600E	SS600E	-	-	-
		PG: AL12	PG: AL06	PG: AL05	PG: AL14	PG: AL08	PG: AL09

¹Adaptor size is 20mm
Hastelloy available in selected sizes

**Dixon™ Premium Type F
Adaptor x Male BSP**



Size (mm)	Working Pressure (PSI)	Part Numbers					
		Aluminium	Bronze	Stainless Steel	Brass	Polypropylene	Nyglass
15	150	ALDC050F	BR050F	SS050F	-	PPF050A ¹	NGF050A ¹
20	250	ALDC075F	BR075F	SS075F	BRSS075F	PPF075A	NGF075A
25	250	ALDC100F	BR100F	SS100F	BRSS100F	PPF100A	NGF100A
32	250	ALDC125F	BR125F	SS125F	BRSS125F	PPF125A	NGF125A
40	250	ALDC150F	BR150F	SS150F	BRSS150F	PPF150A	NGF150A
50	250	ALDC200F	BR200F	SS200F	BRSS200F	PPF200A	NGF200A
65	150	ALDC250F	BR250F	SS250F	BRSS250F	-	-
75	125	ALDC300F	BR300F	SS300F	BRSS300F	PPF300A	NGF300A
100	100	ALDC400F	BR400F	SS400F	BRSS400F	PPF400A	NGF400A
125	75	ALDC500F	BR500F	SS500F	-	-	-
150	75	ALDC600F	BR600F	SS600F	-	-	-
		PG: AL12	PG: AL06	PG: AL05	PG: AL14	PG: AL08	PG: AL09

¹Adaptor size is 20mm
Hastelloy available in selected sizes



- Under no circumstances should camlock couplings be used in compressed air or steam applications
- Polypropylene and nyglass should not be mixed with aluminium fittings

Dixon™ Premium Type DC
Dust Cap



Size (mm)	Working Pressure (PSI)	Part Numbers					
		Aluminium	Bronze	Stainless Steel	Brass	Polypropylene	Nyglass
15	150	ALDC050DC	BR050DC	SS050DC	-	PPH050A ¹	NGH050A ¹
20	250	ALDC075DC	BR075DC	SS075DC	BRSS075DC	PPH075A	NGH075A
25	250	ALDC100DC	BR100DC	SS100DC	BRSS100DC	PPH100A	NGH100A
32	250	ALDC125DC	BR125DC	SS125DC	BRSS125DC	PPH125A	NGH125A
40	250	ALDC150DC	BR150DC	SS150DC	BRSS150DC	PPH150A	NGH150A
50	250	ALDC200DC	BR200DC	SS200DC	BRSS200DC	PPH200A	NGH200A
65	150	ALDC250DC	BR250DC	SS250DC	BRSS250DC	-	-
75	125	ALDC300DC	BR300DC	SS300DC	BRSS300DC	PPH300A	NGH300A
100	100	ALDC400DC	BR400DC	SS400DC	BRSS400DC	PPH400A	NGH400A
125	75	ALDC500DC	BR500DC	SS500DC	-	-	-
150	75	ALDC600DC PG: AL12	BR600DC PG: AL06	SS600DC PG: AL05	- PG: AL14	- PG: AL08	- PG: AL09

¹Adaptor size is 20mm

Dixon™ Premium Type DP
Dust Plug



Size (mm)	Working Pressure (PSI)	Part Numbers					
		Aluminium	Bronze	Stainless Steel	Brass	Polypropylene	Nyglass
15	150	ALDC050DP	BR050DP	SS050DP	-	PPP050A ¹	NGP050A ¹
20	250	ALDC075DP	BR075DP	SS075DP	BRSS075DP	PPP075A	NGP075A
25	250	ALDC100DP	BR100DP	SS100DP	-	PPP100A	NGP100A
32	250	ALDC125DP	BR125DP	SS125DP	BRSS125DP	PPP125A	NGP125A
40	250	ALDC150DP	BR150DP	SS150DP	BRSS150DP	PPP150A	NGP150A
50	250	ALDC200DP	BR200DP	SS200DP	BRSS200DP	PPP200A	NGP200A
65	150	ALDC250DP	BR250DP	SS250DP	BRSS250DP	-	-
75	125	ALDC300DP	BR300DP	SS300DP	BRSS300DP	PPP300A	NGP300A
100	100	ALDC400DP	BR400DP	SS400DP	BRSS400DP	PPP400A	NGP400A
125	75	ALDC500DP	BR500DP	SS500DP	-	-	-
150	75	ALDC600DP PG: AL12	BR600DP PG: AL06	SS600DP PG: AL05	- PG: AL14	- PG: AL08	- PG: AL09

¹Adaptor size is 20mm



• Dust caps and dust plugs are not to be used in any pressure applications for safety and environmental reasons

Dixon™ Premium Type A Adaptor x Female NPT



Size (inch)	Working Pressure (PSI)	Part Numbers			
		Aluminium	Brass	Polypropylene	316 Stainless Steel
½	150	G50-A-AL	50-A-BR	PPA050	50-A-SS
¾	250	G75-A-AL	75-A-BR	PPA075	75-A-SS
1	250	G100-A-AL	100-A-BR	PPA100	100-A-SS
1¼	250	G125-A-AL	125-A-BR	PPA125	125-A-SS
1½	250	G150-A-AL	150-A-BR	PPA150	150-A-SS
2	150	G200-A-AL	200-A-BR	PPA200	200-A-SS
2½	125	G250-A-AL	250-A-BR	-	250-A-SS
3	125	G300-A-AL	300-A-BR	PPA300	300-A-SS
4	100	G400-A-AL	400-A-BR	PPA400	400-A-SS
5	75	G500-A-AL	500-A-BR	-	500-A-SS
6	75	G600-A-AL	600-A-BR	-	600-A-SS

Product Group: AL04

Dixon™ Premium Type B Coupler x Male NPT



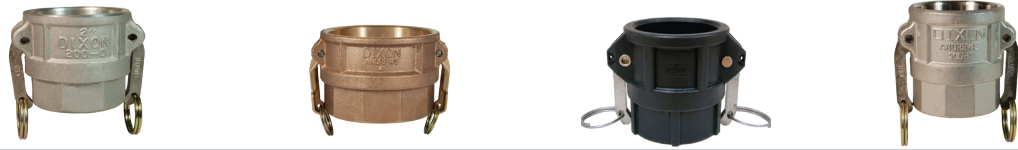
Size (inch)	Working Pressure (PSI)	Part Numbers			
		Aluminium	Brass	Polypropylene	316 Stainless Steel
½	150	G50-B-AL	50-B-BR	PPB050	50-B-SS
¾	250	G75-B-AL	75-B-BR	PPB075	75-B-SS
1	250	G100-B-AL	100-B-BR	PPB100	100-B-SS
1¼	250	G125-B-AL	-	PPB125	125-B-SS
1½	250	G150-B-AL	150-B-BR	PPB150	150-B-SS
2	150	G200-B-AL	200-B-BR	PPB200	200-B-SS
2½	125	G250-B-AL	-	PPB250	250-B-SS
3	125	G300-B-AL	300-B-BR	PPB300	300-B-SS
4	100	G400-B-AL	400-B-BR	PPB400	400-B-SS
5	75	G500-B-AL	-	-	-
6	75	G600-B-AL	-	-	-

Product Group: AL04



- Under no circumstances should camlock couplings be used in compressed air or steam applications
- Dixon™ & Boss-Lock™ camlock couplings do not interchange in the 8" size

Dixon™ Premium Type D
Coupler x Female NPT



Size (inch)	Working Pressure (PSI)	Part Numbers			
		Aluminium	Brass	Polypropylene	316 Stainless Steel
½	150	G50-D-AL	50-D-BR	PPD050	50-D-SS
¾	250	G75-D-AL	75-D-BR	PPD075	75-D-SS
1	250	G100-D-AL	100-D-BR	PPD100	100-D-SS
1¼	250	G125-D-AL	125-D-BR	PPD125	125-D-SS
1½	250	G150-D-AL	150-D-BR	PPD150	150-D-SS
2	150	G200-D-AL	200-D-BR	PPD200	200-D-SS
2½	125	G250-D-AL	250-D-BR	-	250-D-SS
3	125	G300-D-AL	300-D-BR	PPD300	300-D-SS
4	100	G400-D-AL	400-D-BR	PPD400	400-D-SS
5	75	G500-D-AL	500-D-BR	-	500-D-SS
6	75	G600-D-AL	600-D-BR	-	-

Product Group: AL04

Dixon™ Premium Type F
Adaptor x Male NPT



Size (inch)	Working Pressure (PSI)	Part Numbers			
		Aluminium	Brass	Polypropylene	316 Stainless Steel
½	150	G50-F-AL	50-F-BR	PPF050	50-F-SS
¾	250	G75-F-AL	75-F-BR	PPF075	75-F-SS
1	250	G100-F-AL	100-F-BR	PPF100	100-F-SS
1¼	250	G125-F-AL	125-F-BR	PPF125	125-F-SS
1½	250	G150-F-AL	150-F-BR	PPF150	150-F-SS
2	150	G200-F-AL	200-F-BR	PPF200	200-F-SS
2½	125	G250-F-AL	250-F-BR	PPF250	250-F-SS
3	125	G300-F-AL	300-F-BR	PPF300	300-F-SS
4	100	G400-F-AL	400-F-BR	PPF400	400-F-SS
5	75	G500-F-AL	-	-	-
6	75	G600-F-AL	600-F-BR	-	-

Product Group: AL04



- Under no circumstances should camlock couplings be used in compressed air or steam applications
- Dixon™ & Boss-Lock™ camlock couplings do not interchange in the 8" size

Dixon™ Premium Reducing Type A

Adaptor x Female BSP



Size (mm)		Working Pressure (PSI)	Part Numbers	
adaptor	BSP		Aluminium	Stainless Steel
50	40	250	2015-A-ALA	2015-A-SSA
50	75	125	2030-A-ALA	2030-A-SSA
75	50	125	3020-A-ALA	3020-A-SSA
75	100	100	3040-A-ALA	3040-A-SSA
100	75	100	4030-A-ALA	4030-A-SSA
100	150	75	4060-A-ALA	4060-A-SSA
150	100	75	-	6040-A-SSA

Product Group: AL10

Dixon™ Premium Reducing Type B

Coupler x Male BSP



Size (mm)		Working Pressure (PSI)	Part Numbers	
coupler	BSP		Aluminium	Stainless Steel
40	25	250	1510-B-ALA	1510-B-SSA
50	40	250	2015-B-ALA	2015-B-SSA
50	75	250	2030-B-ALA	2030-B-SSA
75	50	125	3020-B-ALA	3020-B-SSA
75	100	125	3040-B-ALA	3040-B-SSA
100	75	100	4030-B-ALA	4030-B-SSA

Product Group: AL10

Dixon™ Premium Reducing Type C

Coupler x Hose Tail



Size (mm)		Working Pressure (PSI)	Part Numbers	
coupler	tail		Aluminium	Stainless Steel
50	40	250	2015-C-AL	2015-C-SS
75	50	125	3020-C-AL	3020-C-SS
75	100	125	3040-C-AL	3040-C-SS
100	75	100	4030-C-AL	4030-C-SS
125	100	75	5040-C-AL	5040-C-SS

Product Group: AL10

Dixon™ Premium Reducing Type D

Coupler x Female BSP



Size (mm)		Working Pressure (PSI)	Part Numbers	
coupler	BSP		Aluminium	Stainless Steel
40	25	250	1510-D-ALA	1510-D-SSA
50	40	250	2015-D-ALA	2015-D-SSA
75	50	125	3020-D-ALA	3020-D-SSA
100	75	100	4030-D-ALA	4030-D-SSA

Product Group: AL10

Dixon™ Premium Reducing Type E

Adaptor x Hose Tail

Size (mm)		Working Pressure (PSI)	Part Numbers	
adaptor	tail		Aluminium	Stainless Steel
50	40	250	2015-E-AL	2015-E-SS
75	50	125	3020-E-AL	3020-E-SS
100	75	100	4030-E-AL	4023-E-SS
125	100	75	5040-E-AL	-

Product Group: AL10



Dixon™ Premium Reducing Type F

Adaptor x Male BSP

Size (mm)		Working Pressure (PSI)	Part Numbers	
adaptor	BSP		Aluminium	Stainless Steel
40	50	250	1520-F-ALA	-
50	40	250	2015-F-ALA	2015-F-SSA
50	75	250	2030-F-ALA	-
75	40	125	3015-F-ALA	3015-F-SSA
75	50	125	3020-F-ALA	3020-F-SSA
75	100	125	3040-F-ALA	-
100	75	100	4030-F-ALA	4030-F-SSA

Product Group: AL10



Dixon™ Premium Reducing Type DA

Coupler x Adaptor

Size (mm)		Working Pressure (PSI)	Part Numbers
coupler	adaptor		Aluminium
40	25	250	1510-DA-AL
40	50	250	1520-DA-AL
50	40	250	2015-DA-AL
50	75	125	2030-DA-AL
50	100	100	2040-DA-AL
75	40	125	3015-DA-AL
75	50	125	3020-DA-AL
75	100	100	3040-DA-AL
100	50	100	4020-DA-AL
100	75	100	4030-DA-AL
100	150	100	4060-DA-AL
150	75	75	6030-DA-AL
150	100	75	6040-DA-AL
150	125	75	6050-DA-AL

Product Group: AL10



Dixon™ Premium Spool Adaptor

Adaptor x Adaptor



Size (mm)		Working Pressure (PSI)	Part Numbers		
adaptor	adaptor		Aluminium	Bronze	Stainless Steel
25	25	250	100-AA-AL	100-AA-BR	100-AA-SS
32	32	250	125-AA-AL	125-AA-BR	125-AA-SS
40	40	250	150-AA-AL	150-AA-BR	150-AA-SS
40	50	250	1520-AA-AL	-	1520-AA-SS
50	50	250	200-AA-AL	200-AA-BR	200-AA-SS
50	75	125	2030-AA-AL	-	2030-AA-SS
65	65	150	250-AA-AL	-	-
65	75	125	2530-AA-AL	-	2530-AA-SS
65	100	100	2540-AA-AL	-	-
75	75	125	300-AA-AL	300-AA-BR	300-AA-SS
75	100	100	3040-AA-AL	-	3040-AA-SS
100	100	100	400-AA-AL	400-AA-BR	400-AA-SS
100	125	75	4050-AA-AL	-	-
100	150	75	4060-AA-AL	-	4060-AA-SS
150	150	75	600-AA-AL	-	600-AA-SS

Product Group: AL10

Dixon™ Premium Spool Coupler

Coupler x Coupler



Size (mm)		Working Pressure (PSI)	Part Numbers	
coupler	coupler		Aluminium	Stainless Steel
50	50	250	200-DD-AL	200-DD-SS
50	75	125	2030-DD-AL	2030-DD-SS
75	75	125	300-DD-AL	300-DD-SS
75	100	100	3040-DD-AL	-
100	100	100	400-DD-AL	400-DD-SS

Product Group: AL10

Dixon™ Premium Lockable Dust Caps



Aluminium



Stainless Steel

Size		Part Numbers		
mm	inch	Aluminium	Bronze	Stainless Steel
40	1½	-	-	150DC-SSL
50	2	AL200DC-L	BR200DC-L	200DC-SSL
75	3	AL300DC-L	BR300DC-L	300DC-SSL
100	4	AL400DC-L	BR400DC-L	400DC-SSL
150	6	AL600DC-L	-	-

Product Group: AL10

Dixon™ Premium Flange Adaptor

Adaptor x Flange - Drilled Table D/E

Size (mm)	Working Pressure (PSI)	Part Numbers	
		Aluminium	Stainless Steel
25	250	-	100-LA-SS
40	250	-	150-LA-SS
50	250	200-LA-AL	200-LA-SS
75	125	300-LA-AL	300-LA-SS
100	100	400-LA-AL	400-LA-SS
150	75	600-LA-AL	600-LA-SS



Also available in ANSI 150#

Product Group: AL10

Dixon™ Premium Flange Coupler

Coupler x Flange - Table D/E

Size (mm)	Working Pressure (PSI)	Part Numbers	
		Aluminium	Stainless Steel
25	250	-	100-LD-SS
40	250	-	150-LD-SS
50	250	200-LD-AL	200-LD-SS
75	125	300-LD-AL	300-LD-SS
100	100	400-LD-AL	400-LD-SS
150	75	600-LD-AL	600-LD-SS



Also available in ANSI 150#

Product Group: AL10

Dixon™ Premium Bend 68°

Coupler x Hose Tail

Size (mm)	Working Pressure (PSI)	Part Numbers	
		Aluminium	Brass
50	250	20-C68-AL	-
65	150	25-C68-AL	25-C68-BR
75	125	30-C68-AL	30-C68-BR
100	100	40-C68-AL	40-C68-BR



Product Group: AL10



- Under no circumstances should camlock couplings be used in compressed air or steam applications
- Dust caps and dust plugs are not to be used in any pressure applications for safety and environmental reasons

Dixon™ Standard Camlocks

Application

- The Dixon™ standard is a durable and economical camlock that is designed for quick and easy connection and disconnection. Ideal for light industrial and agricultural applications. This reliable camlock is for use with hose, pipe, tubing and tanks to convey a wide variety of liquids and dry bulk materials.

Materials

- Body: cast aluminium equivalent to ASTM A383 or stainless steel CF8M (316 Equivalent)
- Levers: stainless steel
- Pins: zinc plated steel
- Pull Rings: zinc plated steel
- Seal: Nitrile Buna-N rubber

Specifications

- Interchangeable with all products produced to commercial description A-A-59326D

Connections

- Camlock adaptor and coupler
- BSP female and male
- Standard hose tail

Aluminium



Size (mm)	Working Pressure (PSI)	Part Numbers					
		Type A Adaptor x Female BSP	Type B Coupler x Male BSP	Type C Coupler x Hose Tail	Type D Coupler x Female BSP	Type E Adaptor x Hose Tail	Type F Adaptor x Male BSP
20	250	EAL075A	EAL075B	EAL075C	EAL075D	EAL075E	EAL075F
25	250	EAL100A	EAL100B	EAL100C	EAL100D	EAL100E	EAL100F
32	250	EAL125A	EAL125B	EAL125C	EAL125D	EAL125E	EAL125F
40	250	EAL150A	EAL150B	EAL150C	EAL150D	EAL150E	EAL150F
50	250	EAL200A	EAL200B	EAL200C	EAL200D	EAL200E	EAL200F
65	150	EAL250A	EAL250B	EAL250C	EAL250D	EAL250E	EAL250F
75	125	EAL300A	EAL300B	EAL300C	EAL300D	EAL300E	EAL300F
100	100	EAL400A	EAL400B	EAL400C	EAL400D	EAL400E	EAL400F
150	75	EAL600A	EAL600B	EAL600C	EAL600D	EAL600E	EAL600F

Product Group: AL19

Stainless Steel



Size (mm)	Working Pressure (PSI)	Part Numbers					
		Type A Adaptor x Female BSP	Type B Coupler x Male BSP	Type C Coupler x Hose Tail	Type D Coupler x Female BSP	Type E Adaptor x Hose Tail	Type F Adaptor x Male BSP
20	250	ESS075A	ESS075B	ESS075C	ESS075D	ESS075E	ESS075F
25	250	ESS100A	ESS100B	ESS100C	ESS100D	ESS100E	ESS100F
32	250	ESS125A	ESS125B	ESS125C	ESS125D	ESS125E	ESS125F
40	250	ESS150A	ESS150B	ESS150C	ESS150D	ESS150E	ESS150F
50	250	ESS200A	ESS200B	ESS200C	ESS200D	ESS200E	ESS200F
65	150	ESS250A	ESS250B	ESS250C	ESS250D	ESS250E	ESS250F
75	125	ESS300A	ESS300B	ESS300C	ESS300D	ESS300E	ESS300F
100	100	ESS400A	ESS400B	ESS400C	ESS400D	ESS400E	ESS400F

Product Group: AL20

Dixon™ Standard Camlocks



Size (mm)	Part Numbers			
	Type DP - Dust Plug		Type DC - Dust Cap	
	Aluminium	Stainless Steel	Aluminium	Stainless Steel
20	EAL075DP	ESS075DP	EAL075DC	ESS075DC
25	EAL100DP	ESS100DP	EAL100DC	ESS100DC
32	EAL125DP	ESS125DP	EAL125DC	ESS125DC
40	EAL150DP	ESS150DP	EAL150DC	ESS150DC
50	EAL200DP	ESS200DP	EAL200DC	ESS200DC
65	EAL250DP	ESS250DP	EAL250DC	ESS250DC
75	EAL300DP	ESS300DP	EAL300DC	ESS300DC
100	EAL400DP	ESS400DP	EAL400DC	ESS400DC
150	EAL600DP	-	EAL600DC	-
	Product Group: AL19	Product Group: AL20	Product Group: AL19	Product Group: AL20

Dixon™ Standard Crimp Hose Tails

Materials

- Body: cast aluminium equivalent to ASTM A383 or stainless steel CF8M (316 Equivalent)
- Levers: brass
- Pins: zinc plated steel
- Pull Rings: zinc plated steel
- Seal: Nitrile Buna-N rubber



Size (mm)	Working Pressure (PSI)	Part Numbers			
		Coupler x Hose Tail - Crimp		Adaptor x Hose Tail - Crimp	
		Aluminium	Stainless Steel	Aluminium	Stainless Steel
25	250	EAL100C-CS	ESS100C-CS	EAL100E-CS	ESS100E-CS
40	250	EAL150C-CS	ESS150C-CS	EAL150E-CS	ESS150E-CS
50	250	EAL200C-CS	ESS200C-CS	EAL200E-CS	ESS200E-CS
65	150	EAL250C-CS	ESS250C-CS	EAL250E-CS	ESS250E-CS
75	125	EAL300C-CS	ESS300C-CS	EAL300E-CS	ESS300E-CS
100	100	EAL400C-CS	ESS400C-CS	EAL400E-CS	ESS400E-CS
		Product Group: AL19	Product Group: AL20	Product Group: AL19	Product Group: AL20



Supplied standard with a Nitrile Buna-N gasket
Refer to King Crimp™ sleeves - page 114



- Under no circumstances should camlock couplings be used in compressed air or steam applications
- Dust caps and dust plugs are not to be used in any pressure applications for safety and environmental reasons

Vent-Lock™ Safety Couplings

Application

- Transfer of fluids and solids with a safer disconnection.

Features

- Safety release camlock couplings permit the release of static pressure when disconnecting hose assemblies
- The venting system protects the operator from being sprayed with hazardous or non-hazardous fluids or solids
- Rated to 250 PSI, a recommendation based on the use of mating Dixon™ L-style fittings at an ambient temperature of 21°C with a standard Nitrile buna seal installed
- For use at elevated temperatures or other unusual operating conditions consult Dixon™
- Safety orange powder-coated cam arms
- Does not interchange with any other standard camlock

Materials

- 316 Stainless steel CF8M

Attachment Options

- Ferrules, sleeves or bands



Size (mm)	Working Pressure (PSI)	Part Numbers					
		Adaptor x Female NPT	Coupler x Hose Tail	Adaptor x Hose Tail	Dust Cap	Dust Plug	Handle
25	250	L100-A-SS	L100-C-SS	L100-E-SS	L100-DC-SS	L100-DP-SS	L100-HSCRPI-SI
40	250	L150-A-SS	L150-C-SS	L150-E-SS	L150-DC-SS	L150-DP-SS	L200-HSCRPI-SI
50	250	L200-A-SS	L200-C-SS	L200-E-SS	L200-DC-SS	L200-DP-SS	-
80	150	L300-A-SS	L300-C-SS	L300-E-SS	L300-DC-SS	L300-DP-SS	-



Supplied standard with a nitrile buna gasket
Refer to King Crimp™ sleeves and ferrules - page 114

Product Group: AL17

Vent-Lock™ Safety EZ Boss-Lock™ Couplings



Size (mm)	Working Pressure (PSI)	Part Numbers			
		Coupler x Hose Tail	Coupler x Female NPT	Dust Cap	Handle
25	250	RLC100EZ	RLD100EZ	RLH100EZ	LRHEZ175
40	250	RLC150EZ	RLD150EZ	RLH150EZ	LRHEZ152
50	250	RLC200EZ	RLD200EZ	RLH200EZ	LRHEZ152
80	150	RLC300EZ	-	RLH300EZ	-



Supplied standard with a nitrile buna gasket
Refer to King Crimp™ sleeves and ferrules - page 114

Product Group: AL17



- Vent-Lock™ Safety Couplings do not interchange with any other standard camlock, they are only to be used with other Vent-Lock™ camlocks

Dixon™ King Crimp™ Camlock Couplings

Size (mm)	15	20-50	65	75	100	125-150	200
Pressure (PSI)	150	250	150	125	100	75	50
Pressure (PSI) - working pressure with King Crimp™ ferrule system	150	250	150	150	150	75	50

Dixon™ King Crimp™ Type C



Size (mm)	Working Pressure (PSI)	Part Numbers			
		Stainless Steel EZ Boss-Lock	Aluminium A380 Permanent Mold	Brass C38000 Forged	Stainless Steel 316 Investment Cast
25	250	RC100EZCR	G100-C-ALCR	G100-C-BRCR	G100-C-SSCR
40	250	RC150EZCR	G150-C-ALCR	G150-C-BRCR	G150-C-SSCR
50	250	RC200EZCR	G200-C-ALCR	G200-C-BRCR	G200-C-SSCR
75	125	RC300EZCR	G300-C-ALCR	G300-C-BRCR	G300-C-SSCR
100	100	RC400EZCR	G400-C-ALCR	G400-C-BRCR	G400-C-SSCR
150	75	RC600EZCR	G600-C-ALCR	-	G600-C-SSCR

Product Group: AL03 Product Group: AL15



Supplied standard with a nitrile buna gasket
Refer to King Crimp™ sleeves and ferrules - page 114

Dixon™ King Crimp™ Type E



Size (mm)	Working Pressure (PSI)	Part Numbers		
		Aluminium A380 Permanent Mold	Brass C38000 Forged	Stainless Steel 316 Investment Cast
25	250	G100-E-ALCR	G100-E-BRCR	G100-E-SSCR
40	250	G150-E-ALCR	G150-E-BRCR	G150-E-SSCR
50	250	G200-E-ALCR	G200-E-BRCR	G200-E-SSCR
75	125	G300-E-ALCR	G300-E-BRCR	G300-E-SSCR
100	100	G400-E-ALCR	G400-E-BRCR	G400-E-SSCR
150	75	G600-E-ALCR	G600-E-BRCR	G600-E-SSCR

Product Group: AL15



Supplied standard with a nitrile buna gasket
Refer to King Crimp™ sleeves and ferrules - page 114



- The EZ Boss-Lock™ arms are not to be fitted on any other fitting that is not specifically produced for their use
- Only use the crimp-style hose tails with the crimp-style sleeves and ferrules

EZ Boss-Lock™ Couplings

Features

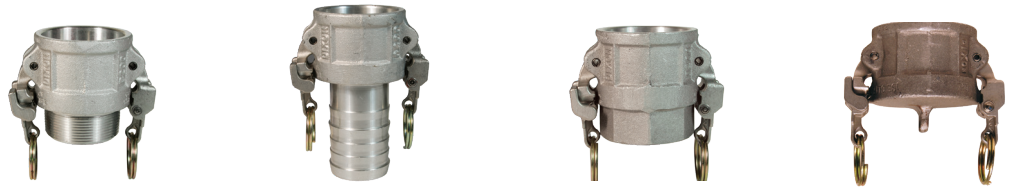
- No more fumbling with clamps, wire, clips, or pins
- Close the handles and the locking mechanism is engaged
- Easy and ergonomic to open, the release lever is under your thumb when you want to open the fitting
- Resistant to accidental disconnection when being dragged
- The release lever opens in the direction opposite to the cam arms, so movements that can open the release lever also can close the camlock arm
- If the rotating lever is not flush with the handle, it is not properly engaged
- No sliding pins to jam or pop open
- Rotating action helps keep the locking device free of debris
- Rugged design protects critical parts from impact

Materials

- 316 Stainless steel CF8M

Connections

- BSP female and male
- camlock adaptor and coupler
- Hose tail



Size (mm)	Working Pressure (PSI)	Part Numbers			
		Type B	Type C	Type D	Type DC
15 ¹	150	RB050EZA	RC050EZ	RD050EZA	-
20 ¹	250	RB075EZA	RC075EZ	RD075EZA	RH075EZ
25	250	RB100EZA	RC100CEZ	RD100EZA	RH100EZ
32	250	RB125EZA	RC125EZ	RD125EZA	RH125EZ
40	250	RB150EZA	RC150EZ	RD150EZA	RH150EZ
50	250	RB200EZA	-	RD200EZA	RH200EZ
65	150	RB250EZA	RC200EZ	-	-
75	125	RB300EZA	RC300EZ	RD300EZA	RH300EZ
100	100	RB400EZA	RC400EZ	RD400EZA	RH400EZ
150	75	RB600EZA	RC600EZ	-	RH600EZ

Product Group: AL03

Stainless steel, aluminium & brass available in NPT in selected sizes

EZ Boss-Lock™ Swaged Type

Application

- Developed specifically for chemical transport hoses having crosslinked polyethylene (XLPE) or ultra-high molecular weight polyethylene (UHMW) tubes.



Coupler - Type C

Size (mm)	Hose OD (mm)		Part Numbers
	from	to	
20	27.78	39.69	RC075EZ-70
25	34.13	42.86	RC100EZ-70

Product Group: AL03



Adaptor - Type E

Size (mm)	Hose OD (mm)		Part Numbers
	from	to	
20	27.78	39.69	RE075-1370
25	36.91	39.29	RE100-1620
25	39.69	42.86	RE100-1770

Product Group: AL03



- The EZ Boss-Lock arms are not to be fitted on any other fitting that is not specifically produced for their use
- Dixon™ stems & ferrules are specifically designed to be used together as a coupling system

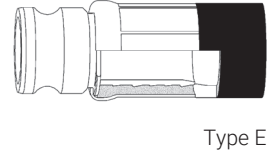
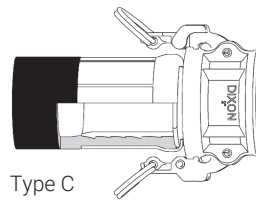
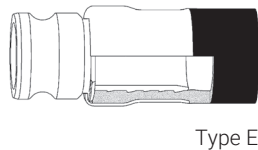
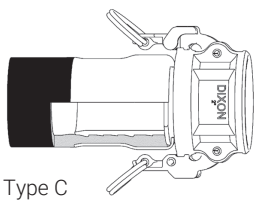
EZ Boss-Lock™ Notched Type

Features

- The advantage of the notched EZ Boss-Lock™ design is that the coupling can be removed from a damaged hose by cutting away the ferrule, without necessarily damaging the fitting
- After inspection to determine its suitability for reuse, it can be reinstalled into another hose by using a new ferrule
- The system allows you to better manage your inventory, you can stock one coupling and two ferrules, and cover the same hose range with less inventory

Swaged Assembly

Crimped Assembly



EZ Boss-Lock™ Notched Stem & Ferrule



Size (mm)	Hose OD (mm)		Part Numbers		
	from	to	Type C	Type E	Notched Ferrule
40	49.21	55.56	RC150EZNO	RE150EZNO	GAS2334NO
40	52.39	59.53	RC150EZNO	RE150EZNO	GAS2370NO
50	62.71	68.26	RC200EZNO	RE200EZNO	GAS2709NO
50	67.47	72.23	RC200EZNO	RE200EZNO	GAS2885NO
75	88.11	94.46	RC300EZNO	RE300EZNO	GAS3760NO
75	94.45	97.63	RC300EZNO	RE300EZNO	GAS3885NO
100	117.48	120.25	RC400EZNO	RE400EZNO	GAS5010NO
			Product Group: AL03	Product Group: AL03	Product Group: AU03

Abrasion Resistant Inserts

Application

- Extends the life of adaptors when transferring proppant to storage tanks.

Length		Part Numbers	Used With
mm	inch		
100	4	400-A-INSERT	400-A-AL, 400-A-BR, 400-A-MI & 400-A-SS
100	4	400-C-INSERTAL	400-C-AL
100	4	400-C-INSERTMI	400-C-MI

Product Group: AL01



400-A-INSERT

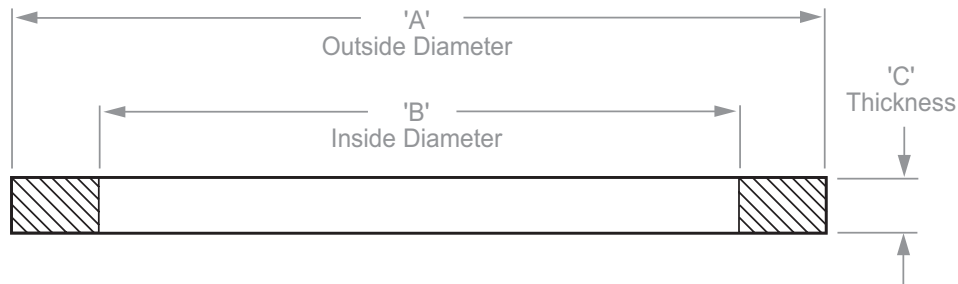


400-C-INSERTAL

Camlock Gasket Dimensions

Features

- Nominal dimensions for elastomeric camlock gaskets
- Internal diameters of the PTFE envelope gaskets and the PTFE accordion gaskets are 1.6mm (1/16") smaller than the internal diameter for the elastomeric gaskets shown below
- Thickness of PTFE accordion gaskets may vary from the chart below



Size (mm)	Dimensions			
	Part	A - Outside Diameter	B - Inside Diameter	C - Thickness
15	50-G	26.19	17.46	3.96
20	75-G	34.93	22.23	5.54
25	100-G	39.69	26.98	6.35
32	125-G	49.21	34.53	6.35
40	150-G	55.56	41.28	6.35
50	200-G	66.68	50.80	6.35
65	250-G	79.38	60.33	6.35
75	300-G	94.46	78.20	6.35
100	400-G	123.83	101.60	6.35
125	500-G	150.81	123.83	6.35
150	600-G	179.39	152.40	6.35
200	800-G	236.54	206.38	8.71

Camlock Gasket Colour Codes

Gasket Code	Material	Colour	Colour Code Stripe
-BU	Nitrile buna rubber - standard in all metal fittings	Black	1 Blue
-BF	Nitrile buna rubber - formulated for fuel service	Black	1 Green
-VI	FKM-A	Green	None
-VIA	FKM-A	Black	1 Yellow
-THK	Extra thick nitrile buna rubber	Black	2 Blue
-EPR	Ethylene propylene	Black	1 White
-NE	Neoprene	Black	1 Red
-WNE	White neoprene - FDA approved material	White	None
-WB	White Nitrile buna rubber - FDA approved material	White	1 Blue
-SIL	Silicone	Red	None
-TF	PTFE (TFE) envelope with nitrile buna rubber filler	White / Black	1 Blue
TFVI	PTFE (TFE) envelope with FKM filler	White / Black	1 Yellow
TFWB	PTFE (TFE) envelope with white nitrile buna rubber filler - FDA approved	White / White	1 Blue
TFEP	PTFE (TFE) envelope with ethylene propylene filler	White / Black	1 White
-TES	PTFE (FEP) encapsulated silicone core - FDA approved materials	Translucent / Red	None
-TEV	PTFE (FEP) encapsulated FKM core	Translucent / Black	None
TFACC	PTFE (TFE) accordion - FDA approved materials	White	None



- Since other manufacturers' coding systems vary, the colour code chart should not be used as a reference in identifying gaskets of unknown origin

Camlock Gaskets



Size (mm)	Part Numbers								
	Buna - N	FKM - A	FKM - A	Buna - N Extra Thick	Ethylene Propylene	Neoprene	White Neoprene	White Buna - N	Silicone
15	50-G-BU	50-G-VI	50-G-VIA	-	-	-	-	-	-
20	75-G-BU	75-G-VI	75-G-VIA	-	75-G-EPR	75-G-NE	-	-	-
25	100-G-BU	100-G-VI	100-G-VIA	100GTHK	100-G-EPR	100-G-NE	-	-	-
32	125-G-BU	125-G-VI	125-G-VIA	125GTHK	-	125-G-NE	-	-	-
40	150-G-BU	150-G-VI	150-G-VIA	150GTHK	150-G-EPR	150-G-NE	150-G-WNE	-	-
50	200-G-BU	200-G-VI	200-G-VIA	200GTHK	200-G-EPR	200-G-NE	200-G-WNE	-	200-G-SIL
65	250-G-BU	250-G-VI	250-G-VIA	250GTHK	250-G-EPR	250-G-NE	-	-	-
75	300-G-BU	300-G-VI	300-G-VIA	300GTHK	300-G-EPR	300-G-NE	300-G-WNE	300-G-WB	300-G-SIL
100	400-G-BU	400-G-VI	400-G-VIA	400GTHK	400-G-EPR	400-G-NE	400-G-WNE	400-G-WB	400-G-SIL
125	500-G-BU	500-G-VI	500-G-VIA	-	-	-	500-G-WNE	-	-
150	600-G-BU	600-G-VI	600-G-VIA	600GTHK	-	-	600-G-WNE	-	-
200	800-G-BU	800-G-VI	800-G-VIA	-	-	-	-	-	-

Refer to the gasket colour code table - page 21

Product Group: AL01

Camlock PTFE Gaskets



Size (mm)	Part Numbers						
	PTFE Envelope			Ethylene Propylene Filler	PTFE Encapsulated		Accordion
	Buna Filler	FKM Filler	White Buna Filler		Silicone Max Temperature 107°C (225°F)	FKM Max Temperature 93°C (200°F)	
15	50-G-TF	50-G-TF-VI	-	-	50-G-TES	-	-
20	75-G-TF	75-G-TF-VI	-	-	75-G-TES	75-G-TEV	75GTFACC
25	100-G-TF	100GTFVI	-	-	100-G-TES	100-G-TEV	100GTFACC
32	125-G-TF	125GTFVI	-	-	125-G-TES	125-G-TEV	125GTFACC
40	150-G-TF	150GTFVI	-	150GTFEP	150-G-TES	150-G-TEV	150GTFACC
50	200-G-TF	200GTFVI	200GTFWB	200GTFEP	200-G-TES	200-G-TEV	200GTFACC
65	250-G-TF	250GTFVI	250GTFWB	-	250-G-TES	250-G-TEV	-
75	300-G-TF	300GTFVI	300GTFWB	300GTFEP	300-G-TES	300-G-TEV	300GTFACC
100	-	400GTFVI	400GTFWB	-	400-G-TES	400-G-TEV	-
125	-	-	-	-	-	-	-
150	600-G-BU	-	-	-	-	-	-

Maximum operating temperatures for specific chemicals may be lower; contact Dixon™ for specific recommendations

Product Group: AL01

Camlock Fuel Gaskets

Size (mm)	Part Numbers	
	Fuel Standard	Fuel Extra Thick
40	150-G-BF	-
50	200-G-BF	-
80	300-G-BF	300GTHKBF
100	400-G-BF	400THKBF



Standard

Product Group: AL01

Dixon™ Camlock Handle Assemblies

Features

- Pull rings are standard on sizes 32mm to 150mm



Brass



Stainless Steel

Size		Description	Part Numbers	
mm	inch		Brass	SS Sintered
15 & 20	½ & ¾	Handle & pin	-	G75HRPSS
25	1	Handle & pin	-	G100HRPSS
32 to 65	1¼ to 2½	Handle, ring & pin	G152HRP	G125250HRPSS
80 to 125	3 to 5	Handle, ring & pin	G34HRP	G300400HRPSS
150	6	Handle, ring & pin	G600HRP	G600HRPSS
200	8	Handle & pin	G600HRP	-

Product Group: AL02

Contact Dixon™ for specifications when ordering replacement arms for 200mm couplings. Only suitable for premium camlocks, no replacement part available for standard range.

Locking Handles for Dixon™ Dust Caps

Brass



Size		Part Numbers
mm	inch	
50	2	200-LH-BR
75	3	300-LH-BR
100	4	400-LH-BR
150	6	600-LH-BR

Product Group: AL02

EZ Boss-Lock™ Handles

Investment Cast Stainless Steel



Size		Part Numbers
mm	inch	
20 to 25	¾ to 1	RHEZ175
32 to 65	1¼ to 2½	RHEZ152
75 to 100	3 to 4	RHEZ34

Product Group: AL02

PVC Coated Lanyard



Length (mm)	Part Number	Description
375	CAL15	Carbon steel with aluminium crimp sleeves. One end crimped, the other end uncrimped for field installation

Product Group: AL01



- Under no circumstances should EZ Boss-Lock™ arms be used on any fitting not specifically produced for their use

Witches Hat Strainers

Application

- Used with female camlock couplings. Has a pre-attached nitrile buna gasket.



Strainer



Gasket

Size		Part Numbers	
mm	inch	304 Stainless Steel Strainer	Nitrile Buna Gasket
80	3	WH300-A	WH300-G
100	4	WH400-A	WH400-G

Product Group: AL01

Disk Strainers

Application

- Threads into the bottom of a female NPT fitting to protect equipment from large contaminants.



Size		Part Numbers	
mm	inch	6061T6 Aluminium	304 Investment Stainless Steel
50	2	SDA200	SDS200
80	3	SDA300	SDS300
100	4	SDA400	SDS400

Product Group: AL01

Lanyards with Clip for Boss-Lock™ Couplings

Size		Part Numbers	Materials	
mm	inch		Clip	Lanyard
20 to 25	¾ to 1	ACL4	Carbon steel	Nylon
32 to 100	1¼ to 4	ACL2		
150	6	ACL3		

Product Group: AL02



ACL2

ACL3

Pull Ring Safety Clips for Boss-Lock™ Couplings

Size		Part Numbers	
mm	inch	304 Stainless Steel Strainer	Nitrile Buna Gasket
32 to 50	1¼ to 2	200PRSCCS	200PRSCSS
80 to 100	3 to 4	300PRSCCS	300PRSCSS

Product Group: AL02



Stainless Steel Pull Ring

Size (mm)	Part Number	Description
35	R200SS	304 Stainless steel - approximate diameter 35mm

Product Group: AD01



Clip for Boss-Lock™ Couplings



Thickness (mm)	Part Number	Description
.072	AC7	.072 Stainless steel wire Product Group: AD05

Carbon Steel Clip Assembly for Boss-Lock™ Coupling



Part Number	Description
BLCA152CS	Pull ring, chain and ACL3 clip Product Group: AL02

Jack Chain with S-Hooks



Length		Part Numbers	Material
mm	inch		
150	6	CH-B-6	Brass
150	6	CH-SS-6	Stainless steel
300	12	CH-B-12	Brass
300	12	CH-C-12	Carbon steel
300	12	CH-SS-12	Stainless steel
600	24	CH-SS-24	Stainless steel Product Group: AL02

Sash Chain with Pull Rings



Length		Part Numbers	Chain Material
mm	inch		
115	4.5	J125	Brass
165	6.5	J150	Brass
215	8.5	J300	Brass
325	13	J500	Brass Product Group: AL02

Pull rings are steel plated

Locking Cam Arm Velcro™ Straps

Application

- Used on the cam and groove female couplers to prevent spills, secure from damage, and hold in place during transport.

Features

- High visibility orange hook and loop with metal buckle provide strength, durability and long life
- Temperature range -57°C to 93°C (-70°F to 200°F)



Length		Part Numbers	Used With
mm	inch		
457	18	CVS18	Fits up to 80mm (3") coupler
914	36	CVS36	Fits up to 200mm (8") coupler Product Group: AL02

Coupler sold separately



- Under no circumstances should EZ Boss-Lock™ arms be used on any fitting not specifically produced for their use



The Right Connection®

Dixon (Asia Pacific) Pty Ltd

170 Francis Road
Wingfield SA 5013

1300 134 651

dixonvalve.com.au

Adelaide, South Australia

(Head Office)

170 Francis Road
Wingfield SA 5013

Brisbane, Queensland

6 Union Circuit
Yatala QLD 4207

Mackay, Queensland

38 John Vella Drive
Paget QLD 4740

Melbourne, Victoria

13 Commercial Drive
Dandenong VIC 3175

Perth, Western Australia

19 Baile Road
Canning Vale WA 6155

Sydney, New South Wales

15 Watsford Road
Campbelltown NSW 2560