

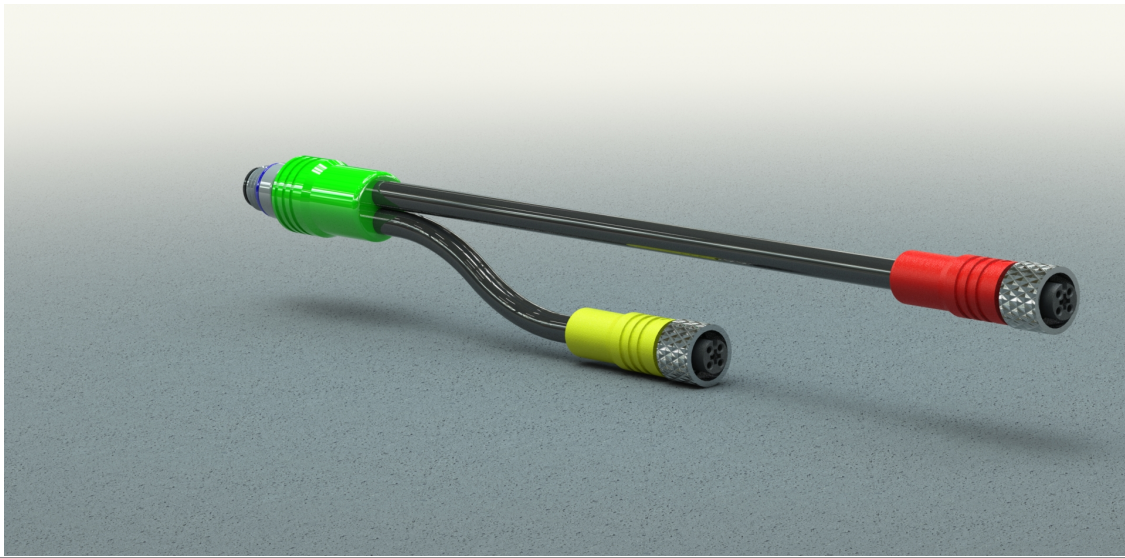
Maintenance & Operating Instructions

For

FIVE WIRE PLUG N PLAY HARNESS

Part Numbers

FT 101P SERIES



For Sales & Service Contact

USA:

Dixon Bayco USA
Chestertown, Maryland
Phone: 410-778-2000
Fax: 410-778-4702
Toll Free: 800-355-1991
E-mail: dixonbayco@dixonvalve.com
www.dixonbayco.com

Canada:

Dixon Group Canada Limited
Innisfil (Barrie), Ontario
Phone: 705-436-1125
Fax: 705-436-6251
Toll Free: 877-963-4966
E-mail: isales@dixongroupcanada.com
www.dixongroupcanada.com

Mexico:

Dixva, S. de R.L. de C.V.
Monterrey, N.L.
Phone: 01-800-00-DIXON (34966)
Fax: 01-81-8354-8197
E-mail: contactenos@dixonvalve.com.mx
www.dixonvalve.com

Europe:

Dixon Group Europe Ltd
Preston, England
Phone: +44 (0)1772 323529
Fax: +44 (0)1772 314664
E-mail: enquiries@dixoneurope.co.uk
www.dixoneurope.co.uk

Asia Pacific:

Dixon (Asia Pacific) Pty Ltd
Wingfield, South Australia
Phone: +61 8 8202 6000
Fax: +61 8 8202 6099
E-mail: enquiries@dixonvalve.com.au
www.dixonvalve.com.au



The Right Connection™

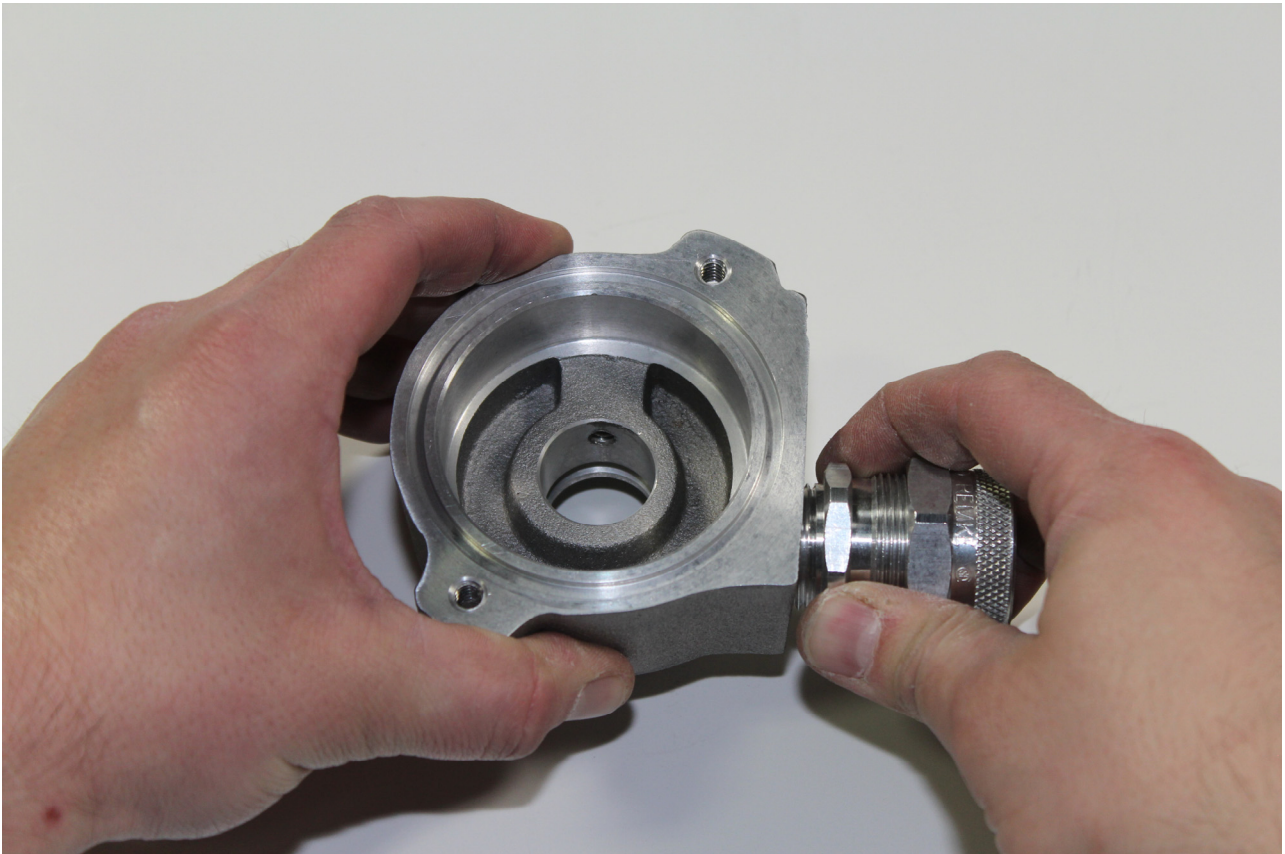
PRODUCT DESCRIPTION:

The FIVE WIRE PLUG N PLAY Harness Series is a cable harness with prewired connectors that offers an easy and trouble free installation. All wire connections are made using color coded thread together water tight connectors.

These instructions provide a picture overview of the steps required to properly install the FloTech Five Wire Plug N Play cable harness.

Installation Steps:

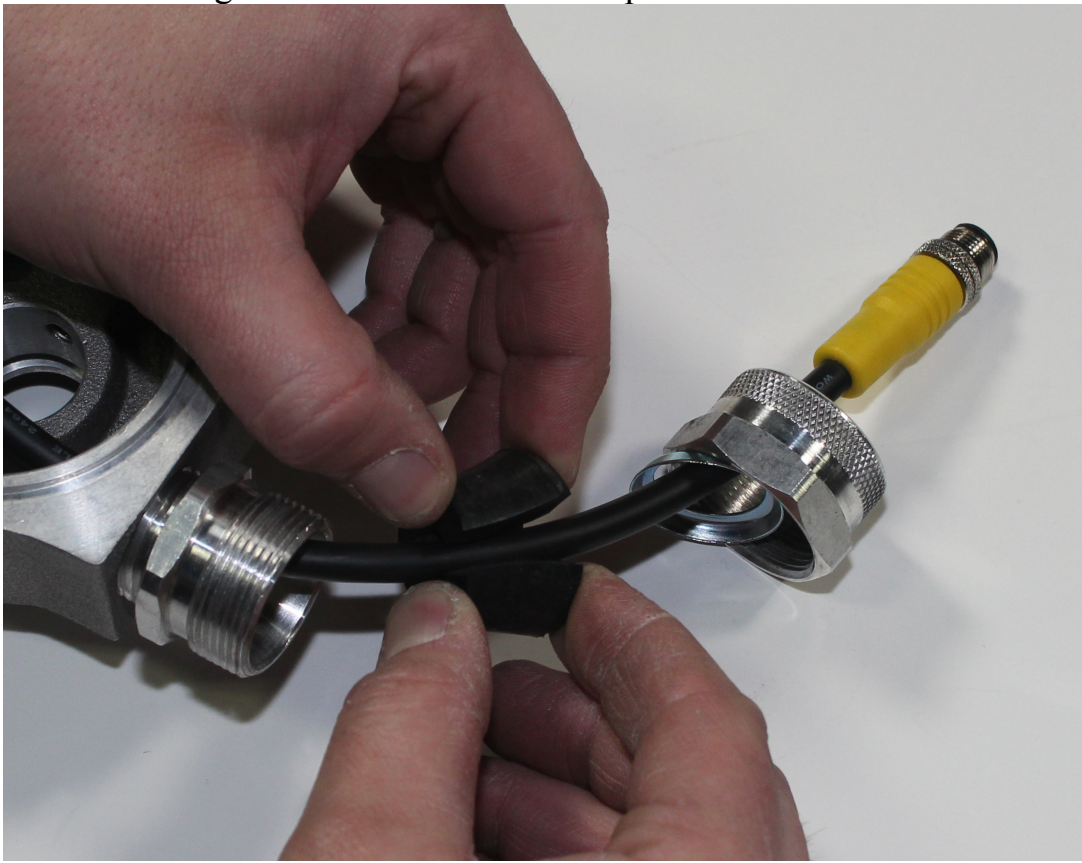
1. Remove sensor cap and probe from housing. Insert Cable gland into the sensor housing. Use some pipe sealant to insure a water tight connection.
2. Cut FT101P sensor to length so that sensor length is set to 60 gallons or 3% of tank capacity compartment. It is not recommended to cut a standard 7" sensor to a shorter length. This will result in insufficient time to stop the flow of product within the load racks reaction time. Longer 12" and 18" sensors may be cut to length with a tubing cutter.



3. Insert the FT101P plug through the cable gland. Push plug from inside housing through to the outside. Pass the plug through metal ring and nut as shown.



4. Spread the rubber grommet as shown and wrap it around the sensor wire.

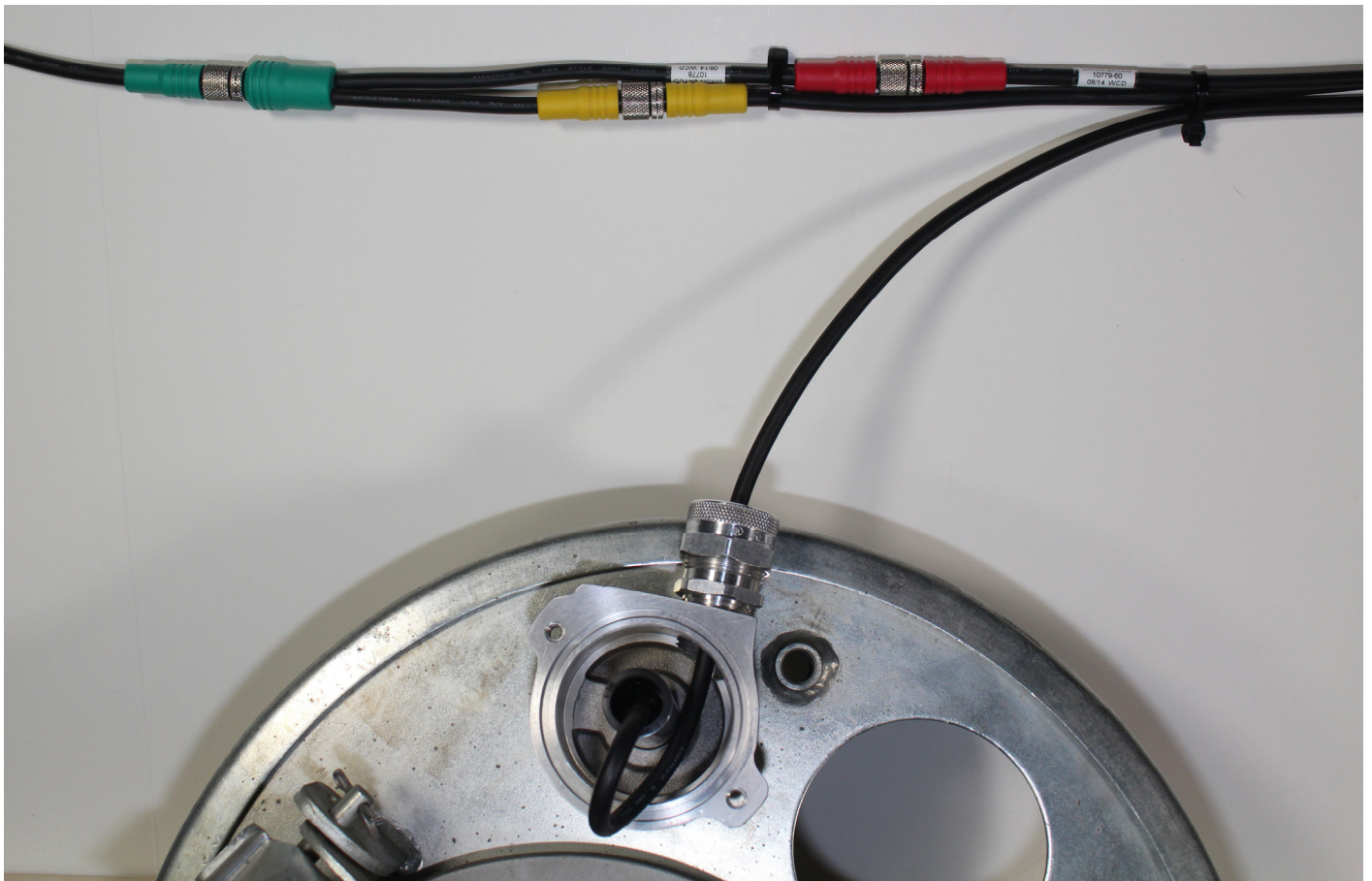


5. Insert the sensor into the sensor housing. Adjust the sensor to the correct depth to comply with the 60 gallon or 3% outage requirements per compartment. Tighten the side screw. Be sure the BLACK thread protector is still in the sensor tube. Do not tighten the cable gland at this time.
6. Mount the sensor housing into the manhole cover.

Next is to assemble the main cable harness on the trailer.

Position one Harness Sensor Junction ('Y' Fitting with green, yellow & red connectors) next to each manhole except the last one (no Harness Sensor Junction is required at the harness termination end).

Take a few minutes to position each socket connection (yellow connector) so they are within plus or minus three feet of the corresponding compartment manhole cover. The cable on the FT101P sensor is 5 feet long, so with a little adjustment of the main cable harness final assembly, all yellow sensor plugs should reach their corresponding yellow socket.

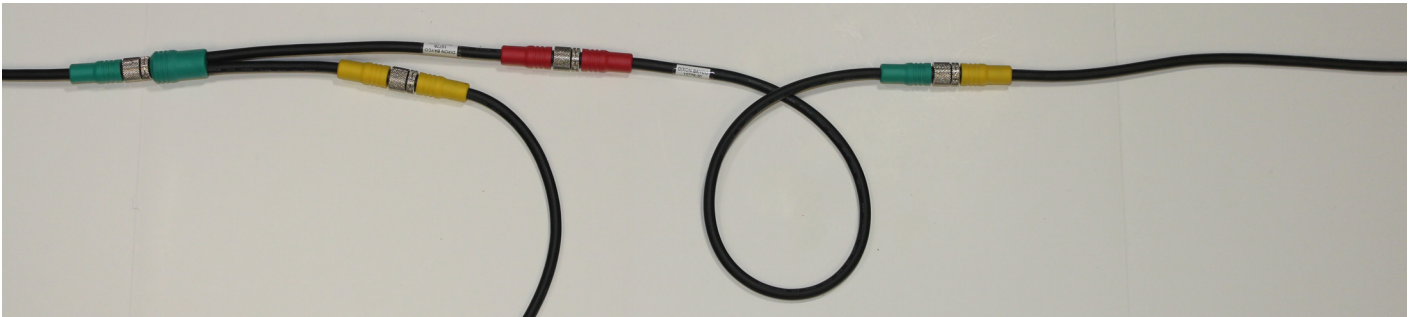


Apply **supplied** grease to all harness junctions before connecting. Connect the Harness Sensor Junctions together using the Harness Extensions (Straight lengths of cable with red & green connectors on the ends). Match the green end of each Harness Sensor Junction to the green end of each Harness Extension. Match the red end of each Harness Sensor Junction to

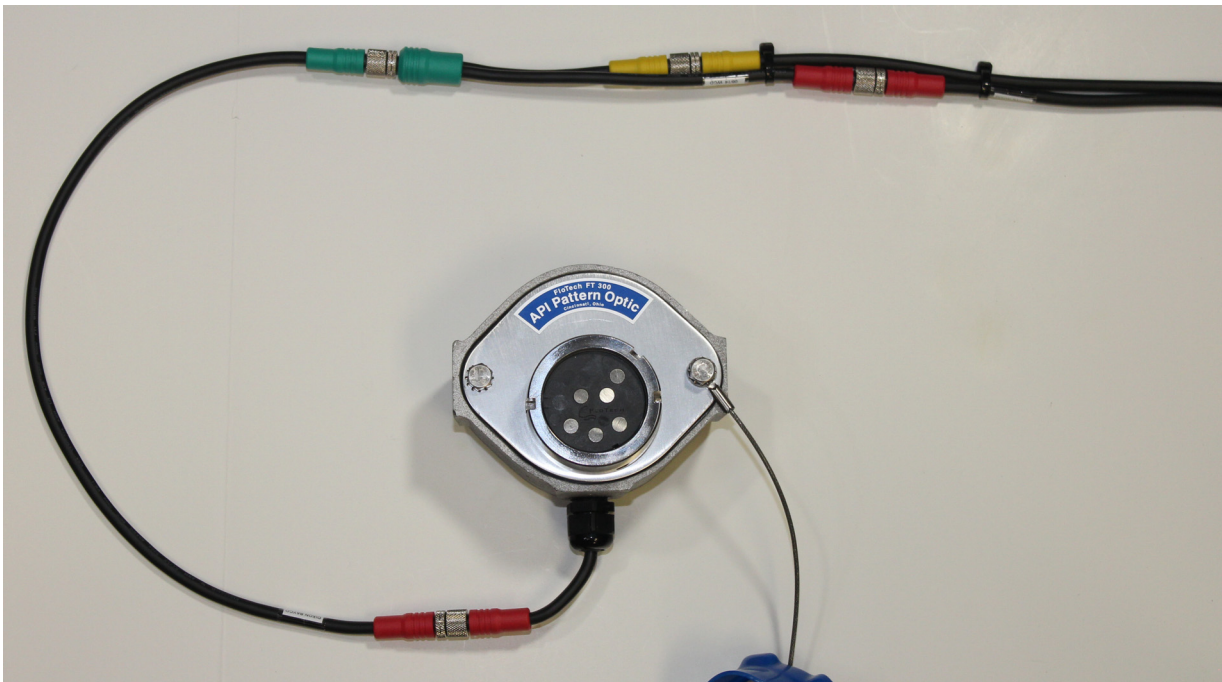
the red end of each Harness Extension. Match each yellow sensor connector to the yellow connector on each corresponding Harness Sensor Junction.



The last yellow sensor connector will attach to the green connector of the last Harness Extension. If the last two manholes are close enough, a final Harness Extension might not be required. In that case, the last yellow sensor connector will attach to the red connector of the last Harness Sensor Junction.



The red connector of the Harness Extension at the beginning of the harness can be connected to the red connector on the Socket. Thread all of the matched connectors together hand tight. DO NOT over tighten.



If two sockets are to be connected, use the optional 'Y' Splitter to connect the second socket.



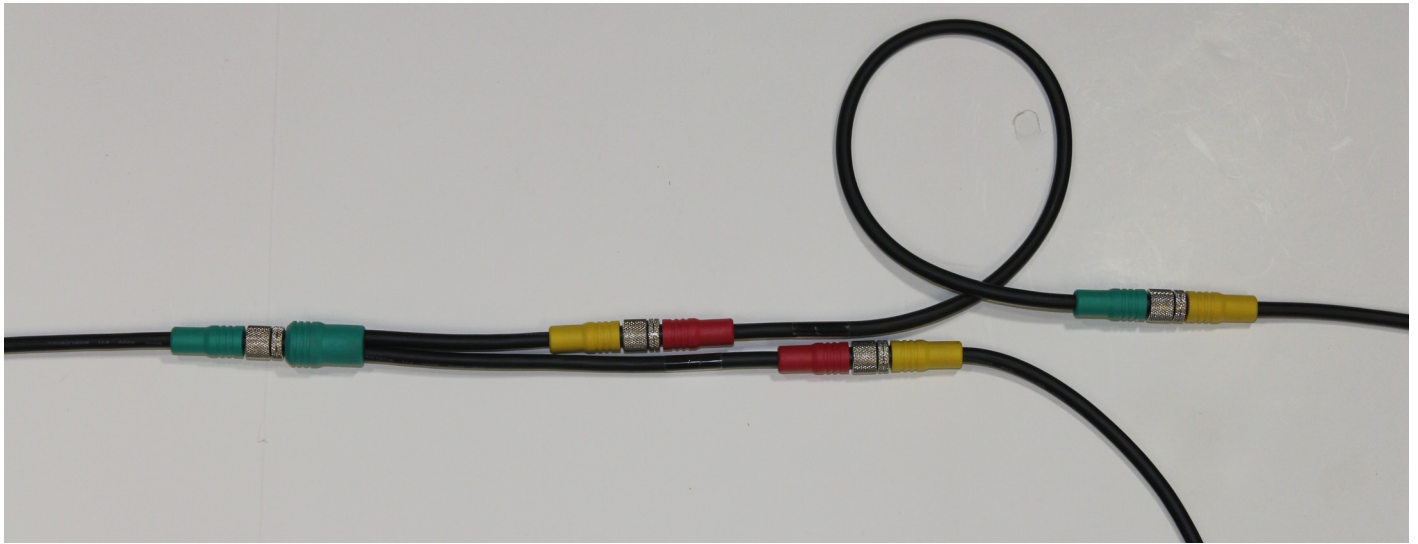
Excess sensor cable can be coiled into the sensor housing. The housing will hold up to one foot of cable. This will help store excess cable and give the wiring a cleaner look.

Next use the provided tie wraps to fasten harness sections together as needed. These cable ties will ensure the harness cable does not get damaged.

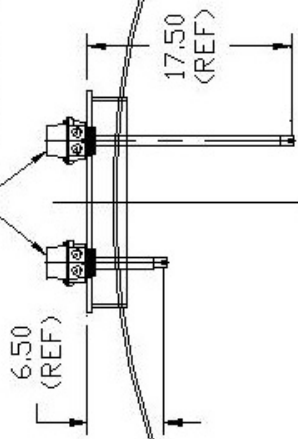
After all wiring is in place and adjusted, install caps on sensor housings and tighten side sensor retaining screw. **Apply 'Never-Seez' to the Cable Gland Nut threads and tighten the Cable Gland Nuts on all sensors.**

Installations running up the front of the trailer:

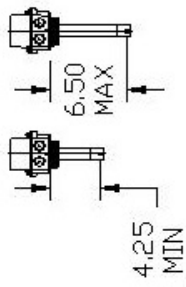
If the harness assembly is to be run up the front of the trailer such that the first compartment encountered is compartment #1, then swap the colored connectors at **EACH** Harness Sensor Junction as shown such that yellow connectors are connected to red connectors.



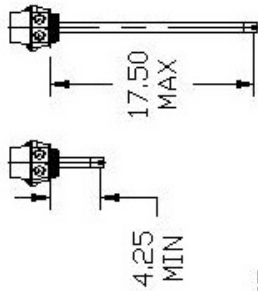
FLOTECH PROBES SET AT LOWEST POSITION (SHOWN)



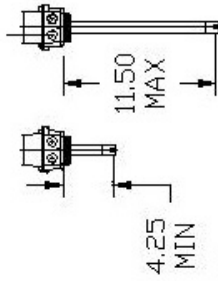
ADJUSTMENT RANGE
FLOTECH PROBE No's
FT101P



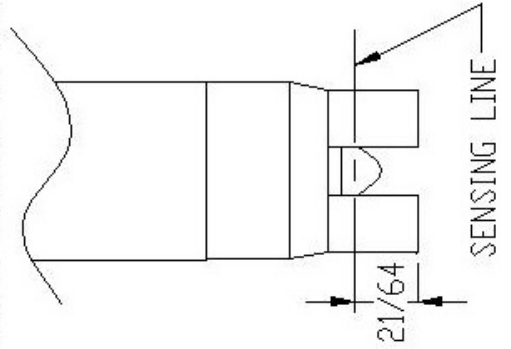
ADJUSTMENT RANGE
FLOTECH PROBE No's
FT101P-18



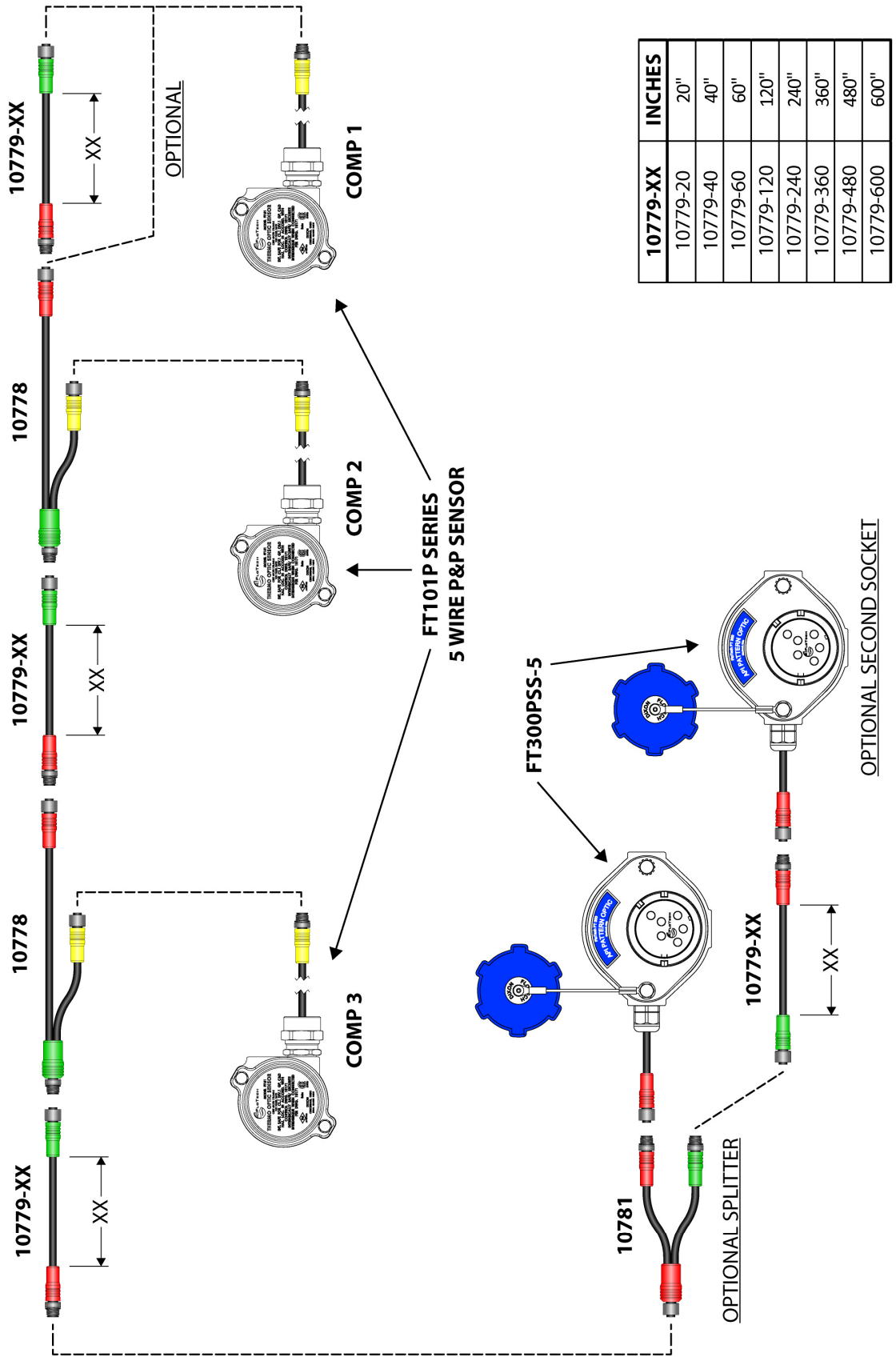
ADJUSTMENT RANGE
FLOTECH PROBE No's
FT101P-12



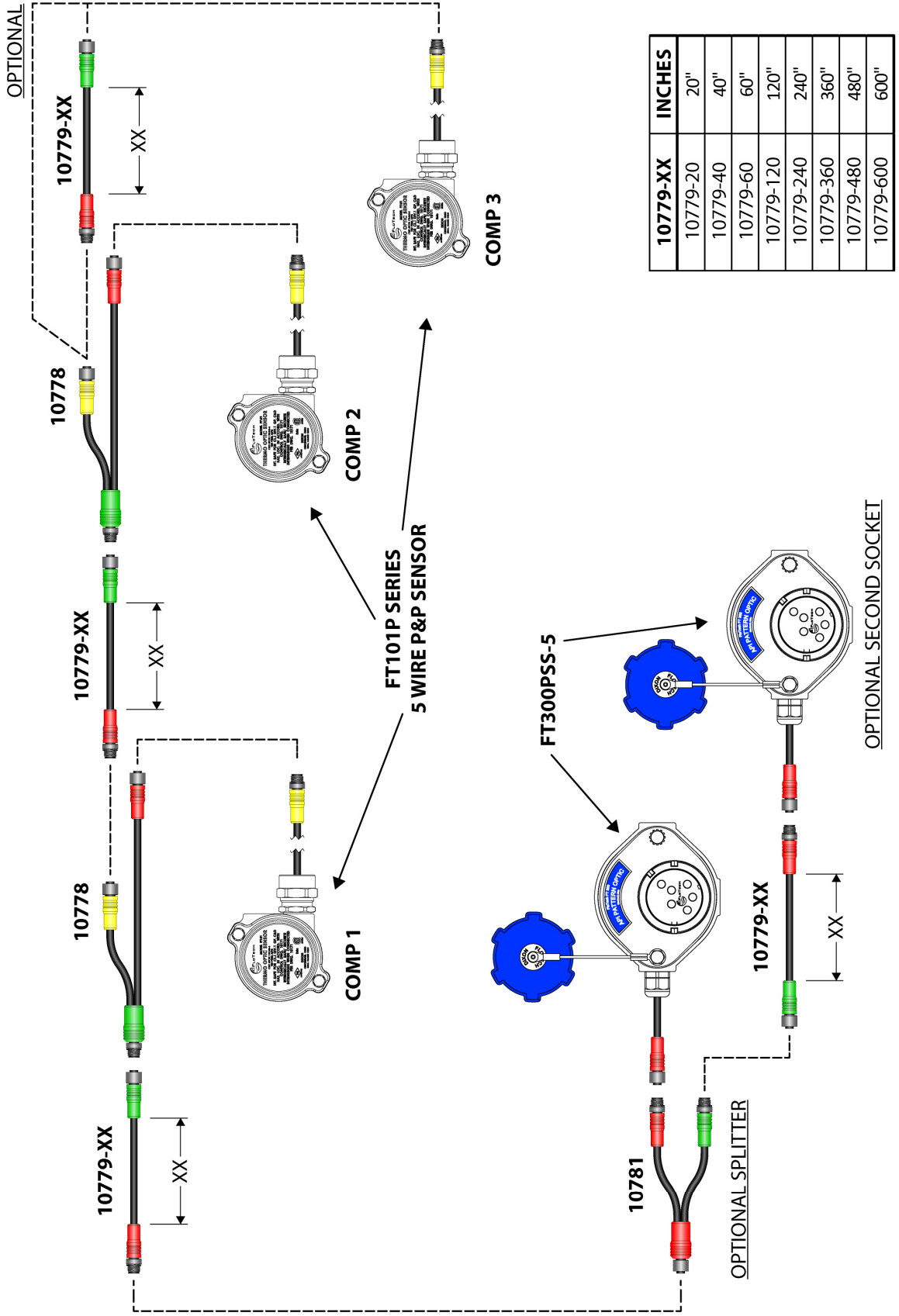
NOTE:
PROBE LENGTH DIMENSIONS ARE FROM
BOTTOM OF GASKET TO THE SENSING POINT



5 WIRE PLUG & PLAY PARTS (USA CONFIGURATION)



5 WIRE PLUG & PLAY PARTS (CANADA CONFIGURATION)



Dixon Warranty:

For warranty Information, please refer to the inside back cover of the latest Dixon catalogue.